

The Jockey Club CPS Limited

Central Police Station Conservation  
and Revitalisation Project:  
*Second Monthly EM&A Report*  
*(1 December to 31 December 2011)*

Issue Date: January 2012

**Environmental Resources Management**

21/F Lincoln House  
979 King's Road  
Taikoo Place  
Island East, Hong Kong  
Telephone: (852) 2271 3000  
Facsimile: (852) 2723 5660  
E-mail: [post.hk@erm.com](mailto:post.hk@erm.com)  
<http://www.erm.com>

The Jockey Club CPS Limited

Central Police Station Conservation  
and Revitalisation Project:  
*Second Monthly EM&A Report*  
*(From 1 December to 31 December*  
*2011)*

Issue Date: January 2012

Reference 0095646

For and on behalf of ERM-Hong Kong, Limited
Approved by: <u>Frank Wan</u>
Signed: <u></u>
Position: <u>Partner</u>
Certified by: <u></u> (Environmental Team Leader - Winnie Ko)
Date: <u>13 January 2012</u>

This report has been prepared by ERM-Hong Kong, Limited with all reasonable skill, care and diligence within the terms of the Contract with the client, incorporating our General Terms and Conditions of Business and taking account of the resources devoted to it by agreement with the client.

We disclaim any responsibility to the client and others in respect of any matters outside the scope of the above.

This report is confidential to the client and we accept no responsibility of whatsoever nature to third parties to whom this report, or any part thereof, is made known. Any such party relies on the report at their own risk.

## EXECUTIVE SUMMARY

The construction works of **Central Police Station Conservation and Revitalisation Project** commenced on 24 October 2011. This is the second monthly Environmental Monitoring and Audit (EM&A) report presenting the EM&A works carried out during the period from 1 December 2011 to 31 December 2011 in accordance with the EM&A Manual.

### Summary of Construction Works undertaken during Reporting Month

The major construction works undertaken during the reporting month include:

- Precautionary works to buildings to be demolished (including Block 16 & 18, Minor Buildings and Revetment Wall)
- Precautionary works for asbestos removal;
- Sundry enabling/opening up works; and
- Trial pit setting out works.

### Environmental Monitoring and Audit Progress

A summary of the monitoring activities in this reporting period is listed below:

- |   |         |
|---|---------|
| • Construction Noise Monitoring during normal weekdays at each monitoring station | 4 times |
| • Joint Environmental Site Inspection   | 1 time  |
| • Joint Heritage Site Inspection  | 1 time  |
| • Landscape & Visual Monitoring   | 1 time  |
| • Tree Inspection   | 1 times |
| • Vibration monitoring  | 0 time  |

### Noise

4 sets of 30-minute construction noise measurements were carried out at each of the monitoring stations (NM2 and NM6) during normal weekdays of the reporting period. No exceedance of Action and Limit Levels of construction noise was recorded during the reporting period.

### Landscape & Visual

Landscape and visual monitoring has commenced since October 2011 on a monthly basis. One tree inspections have been conducted by the arborist during the reporting period. A few observations were identified and mitigation measures were recommended for the Contractor to implement.

## Cultural Heritage

No vibration monitoring was conducted in this reporting period as the construction of foundation has not commenced yet.

Heritage site audit was conducted. The Contractor has generally implemented the mitigation measures as recommended. One observation was identified for the Contractor to follow-up.

## Waste Management

Wastes generated from this Project include inert construction and demolition (C&D) materials and non-inert C&D materials. No inert C&D material was generated, and 18.3 tonnes of non-inert C&D materials were generated during the reporting period. No chemical waste was generated during the reporting period. Non-inert C&D materials are made up of general refuse, steel materials and paper/cardboard packaging materials. The non-inert C&D materials and general refuse generated from the Project were disposed of at the SENT Landfill. 18,680 kg of steel material, 112 kg of paper/cardboard packaging and no plastics were generated and were sent to recyclers for recycling.

## Environmental Site Inspection

A joint environmental site inspection was carried out by the representatives of the Contractor, the IEC and the ET on 20 December 2011. The Contractor has generally implemented the mitigation measures as recommended. A few observations were identified for the Contractor to follow-up.

## Environmental Exceedance/Non-conformance/Compliant/Summons and Prosecution

No exceedance of the Action and Limit Levels of construction noise was recorded at designated monitoring stations during the reporting period.

No non-compliance event was recorded during the reporting period.

No environmental complaint and summons/prosecutions was received in this reporting period.

## Future Key Issues

Works to be undertaken in the next month include:

- Sundry Enabling/ Opening Up Works for batch 2 to 4
- Trial pit excavation
- Precautionary works to buildings to be demolished
- Demolition Works (including Block 16 & 18, Minor Buildings, Revetment Wall and structures for Phase 2 demolition)
- Asbestos abatement work.

Potential environmental impacts arising from the above construction activities are mainly associated with dust, construction noise, site runoff and waste management.

## CONTENTS

1	<i>INRODUCTION</i>	1
1.1	<i>PURPOSE OF THE REPORT</i>	1
1.2	<i>STRUCTURE OF THE REPORT</i>	1
2	<i>PROJECT INFORMATION</i>	3
2.1	<i>BACKGROUND</i>	3
2.2	<i>SITE DESCRIPTION</i>	3
2.3	<i>CONSTRUCTION ACTIVITIES</i>	3
2.4	<i>PROJECT ORGANISATION</i>	4
2.5	<i>STATUS OF ENVIRONMENTAL APPROVAL DOCUMENTS</i>	4
3	<i>ENVIRONMENTAL MONITORING REQUIREMENTS</i>	5
3.1	<i>NOISE MONITORING</i>	5
3.1.1	<i>Monitoring Location</i>	5
3.1.2	<i>Monitoring Parameters, Frequency and Programme</i>	5
3.1.3	<i>Monitoring Equipment and Methodology</i>	5
3.1.4	<i>Event / Action Plan</i>	6
3.1.5	<i>Mitigation Measures</i>	6
3.2	<i>CULTURAL HERITAGE</i>	6
3.2.1	<i>Vibration Monitoring</i>	6
3.2.2	<i>Mitigation Measures</i>	7
3.3	<i>LANDSCAPE AND VISUAL MONITORING</i>	7
3.3.1	<i>Mitigation Measures</i>	7
3.4	<i>ENVIRONMENTAL REQUIREMENTS IN CONTRACT DOCUMENTS</i>	7
4	<i>IMPLEMENTATION STATUS ON ENVIRONMENTAL PROTECTION REQUIREMENTS</i>	8
5	<i>MONITORING RESULTS</i>	9
5.1	<i>NOISE</i>	9
5.2	<i>LANDSCAPE AND VISUAL</i>	9
5.3	<i>CULTURAL HERITAGE</i>	10
5.4	<i>WASTE MANAGEMENT</i>	10
6	<i>ENVIRONMENTAL SITE INSPECTION</i>	11
7	<i>ENVIRONMENTAL NON-CONFORMANCE</i>	12
7.1	<i>SUMMARY OF MONITORING EXCEEDANCE</i>	12
7.2	<i>SUMMARY OF ENVIRONMENTAL NON-COMPLIANCE</i>	12
7.3	<i>SUMMARY OF ENVIRONMENTAL COMPLAINT</i>	12
7.4	<i>SUMMARY OF ENVIRONMENTAL SUMMONS AND SUCCESSFUL PROSECUTION</i>	12
8	<i>FUTURE KEY ISSUES</i>	13

8.1	<i>KEY ISSUES FOR THE COMING MONTH</i>	13
8.2	<i>MONITORING SCHEDULE FOR THE NEXT MONTH</i>	13
8.3	<i>CONSTRUCTION PROGRAMME FOR THE NEXT MONTH</i>	13
9	<i>CONCLUSIONS</i>	14

#### *LIST OF TABLES*

<i>Table 2.1</i>	<i>Summary of Construction Activities Undertaken from 24 October 2011 to 30 November 2011</i>
<i>Table 2.2</i>	<i>Summary of Environmental Licensing, Notification and Permit Status</i>
<i>Table 3.1</i>	<i>Construction Phase Noise Monitoring Station</i>
<i>Table 3.2</i>	<i>Noise Monitoring Equipment</i>
<i>Table 3.3</i>	<i>Action and Limit Levels for Construction Noise Monitoring</i>
<i>Table 4.1</i>	<i>Status of Required Submissions</i>
<i>Table 5.1</i>	<i>Findings of Monthly Tree Inspection in the Reporting Period</i>
<i>Table 5.2</i>	<i>Quantities of Waste Generated from the Project</i>
<i>Table 8.1</i>	<i>Construction Works to be Undertaken in the Coming One Month</i>

#### *LIST OF ANNEXES*

<b>Annex A</b>	<b>Locations of Works Areas and the Surroundings</b>
<i>Annex A1</i>	<i>Project Location</i>
<i>Annex A2</i>	<i>Declared Monuments within the Project Site</i>
<i>Annex A3</i>	<i>Site Layout Plan marked with Works</i>
<b>Annex B</b>	<b>Project Organization Chart and Contact Detail</b>
<b>Annex C</b>	<b>Locations of Noise Monitoring Stations and Noise Sensitive Receivers</b>
<b>Annex D</b>	<b>Monitoring Schedule of the Reporting Period and the Next Month</b>
<b>Annex E</b>	<b>Calibration Reports for Calibrators and Sound Level Meters</b>
<b>Annex F</b>	<b>Event/Action Plans for Noise</b>
<b>Annex G</b>	<b>Summary of Implementation Status</b>
<b>Annex H</b>	<b>Noise Monitoring Results</b>
<b>Annex I</b>	<b>Construction Programme for the Project</b>
<b>Annex J</b>	<b>Tree Inspection Reports</b>
<b>Annex K</b>	<b>Environmental Complaint, Environmental Summon and Prosecution Log</b>

# 1 INTRODUCTION

ERM-Hong Kong, Limited (ERM) was appointed by the Jockey Club CPS Limited (the CPS Ltd) as the Environmental Team (ET) to undertake the Environmental Monitoring and Audit (EM&A) programme for the **Central Police Station Conservation and Revitalisation Project** (the Project).

## 1.1 PURPOSE OF THE REPORT

This is the second EM&A report which summarises the impact monitoring results and audit findings for the EM&A programme during the reporting period from **1 December 2011 to 31 December 2011**.

## 1.2 STRUCTURE OF THE REPORT

The structure of the report is as follows:

### Section 1 : **Introduction**

details the scope and structure of the report.

### Section 2 : **Project Information**

summarises background and scope of the Project, site description, project organization and contact details, construction programme, the construction works undertaken and the status of Environmental Permit(s)/License(s) during the reporting period.

### Section 3 : **Environmental Monitoring Requirement**

summarises the monitoring parameters, monitoring programmes, monitoring methodologies, monitoring frequency, monitoring locations, Action and Limit Levels, Event/Action Plans, environmental mitigation measures as recommended in the EIA report and relevant environmental requirements.

### Section 4 : **Implementation Status on Environmental Protection Requirements**

summarises the implementation of environmental protection measures during the reporting period.

### Section 5 : **Monitoring Results**

summarises the monitoring results obtained in the reporting period.

### Section 6 : **Environmental Site Inspection**

summarises the audit findings of the weekly site inspections undertaken within the reporting period.

### Section 7 : **Environmental Non-conformance**



summarises any monitoring exceedance, environmental complaints and environmental summons within the reporting period.

Section 8 : **Future Key Issues**

summarises the impact forecast and monitoring schedule for the next reporting month.

Section 9 : **Conclusions**

## 2 PROJECT INFORMATION

### 2.1 BACKGROUND

The Chief Executive (CE)'s 2007-2008 Policy Address highlighted revitalisation as the guiding principle of heritage conservation and the Project was among one of the specific proposals put forward by the CE in the same Policy Address. At the meeting of the Executive Council (ExCo) on 15 July 2008, the ExCo advised and the CE ordered that Government should enter into a partnership with the Hong Kong Jockey Club (HKJC) in the form of an agreement (or agreements) to take forward the conservation and revitalisation of the CPS project based on various guiding parameters. The Project is now being undertaken in partnership with the Development Bureau of the HKSAR Government. The HKJC has taken on board the decision at the ExCo meeting and further investigated the design and implementation of the Project. The Project is now implemented by the CPS Limited.

### 2.2 SITE DESCRIPTION

The location of the Project Site is shown in *Annex A1*. The Site is bounded by Hollywood Road to the north, Arbuthnot Road to the east, Chancery Lane to the south and Old Bailey Street to the west.

The Site comprises three Declared Monuments designated under the *Antiquities and Monuments Ordinance* in 1995. They are:

- Central Police Station;
- Former Central Magistracy; and
- Victoria Prison Compound.

They are collectively named the Central Police Station (CPS). *Annex A2* shows the location of the Declared Monuments within CPS and the buildings within the CPS.

### 2.3 CONSTRUCTION ACTIVITIES

A summary of the major construction activities undertaken in this reporting period is shown in *Table 2.1* and illustrated in *Annex A3*.

**Table 2.1** *Summary of Construction Activities Undertaken from 1 December 2011 to 31 December 2011*

<b>Construction Activities Undertaken</b>
<ul style="list-style-type: none"> <li>• Precautionary works to buildings to be demolished (including Block 16&amp;18, Minor Buildings and Revetment Wall)</li> <li>• Precautionary works for asbestos removal</li> <li>• Sundry enabling/opening up works</li> <li>• Trial pit setting out works</li> </ul>

**2.4** *PROJECT ORGANISATION*

The Project organization chart and contact details are shown in *Annex B*.

**2.5** *STATUS OF ENVIRONMENTAL APPROVAL DOCUMENTS*

A summary of the relevant permits, licences, and/or notifications on environmental protection for this Project since the granting of the EP is presented in *Table 2.2*.

**Table 2.2** *Summary of Environmental Licensing, Notification and Permit Status*

<b>Permit/ Licences/ Notification</b>	<b>Reference</b>	<b>Validity Period</b>	<b>Remarks</b>
Environmental Permit (EP)	EP-408/2011	Throughout the Contract	Permit granted on 14 April 2011
Notification of Construction Works as required under <i>Air Pollution Control (Construction Dust) Regulation</i>	Ref. No. 332920	Throughout the Contract	-
Registration of Waste Producer under <i>Waste Disposal Ordinance</i>	Waste Producer No.: 5213-122-G2347-25	Throughout the Contract	-
Effluent Discharge License under <i>Water Pollution Control Ordinance</i>	License No. WT00010633-2011	21 Oct 2011 - 31 Oct 2016	-
Notification of Commencement of Asbestos Abatement Work under <i>Air Pollution Control Ordinance</i>	-	Throughout the Contract	EPD's letter (EPD's ref.: (5) in EPAC/A/4/000/23 3 II) dated 2 December 2011 satisfied that the content of the asbestos abatement plan (Report No.: 0210/11/ED/0078A ) is in accordance with the APCO

### 3.1 NOISE MONITORING

#### 3.1.1 Monitoring Location

The construction noise monitoring locations are listed in *Table 3.1* and are shown in *Annex C*.

**Table 3.1 Construction Phase Noise Monitoring Station**

Monitoring Location	Proposed Construction Noise Monitoring Station			
	ID in EM&A Manual	ID	Type of Measurement	Remark
Rooftop of Ho Fook Building	N2	NM2	Façade	-
Rooftop of Chancery Mansion	---	NM6	Façade	Accesses to the original proposed monitoring location in the EM&A Manual, Chancery House (N5), were rejected; alternative location of Chancery Mansion (N6), were therefore proposed and approved by the Authorised Person (AP), the Independent Environmental Checker (IEC) and EPD.

The noise sensitive receivers are also shown in *Annex C*.

#### 3.1.2 Monitoring Parameters, Frequency and Programme

Weekly construction noise monitoring was conducted in accordance with the requirements stipulated in the EM&A Manual. The monitoring programme for this reporting period is shown in *Annex D*.

The construction noise levels were measured in terms of A-weighted equivalent continuous sound pressure level ( $L_{eq}$ ) in decibels dB(A).  $L_{eq(30min)}$  were used as the monitoring parameter for the time period in between 0700 – 1900 hours on normal weekdays. Supplementary information for data auditing, two statistical sound levels  $L_{10}$  and  $L_{90}$ ; the levels exceeded for 10 and 90 percent of the time respectively, were also recorded during the monitoring for reference. The measured noise levels were logged in every 5 minutes throughout the impact monitoring period.

#### 3.1.3 Monitoring Equipment and Methodology

Construction noise measurements were conducted in accordance with the calibration and measurement procedures as stated in *Annex – General Calibration and Measurement Procedures of Technical Memorandum on Noise from Construction Work other than Percussive Piling (GW-TM)* issued under the *Noise Control Ordinance (NCO) (Cap 400)*.

The sound level meters and calibrator used for the noise measurement, as listed in *Table 3.2*, complies with IEC 651: 1979 and 804:1985 (Type 1) specification. The calibration certificates of the sound level meters are included in *Annex E*.

**Table 3.2** *Noise Monitoring Equipment*

Monitoring Stations	Monitoring Equipment (Sound Level Meter and Calibrator)
NM2, NM6	<u>Calibrator</u> Rion NC-73 (S/N 10997142)  <u>Sound Level Meter</u> Rion-NA27 (S/N 00201194), Rion-NL31 (S/N 00603867), or Rion-NL52 (S/N 00710259)

Immediately prior to and following the noise measurements, the accuracy of the measurement equipment was checked using an acoustic calibrator generating a known sound pressure level at a known frequency.

Measurements were accepted as the calibration level from before and after the noise measurement agree to within 1.0 dB.

### 3.1.4 *Event / Action Plan*

**Table 3.3** *Action and Limit Levels for Construction Noise Monitoring*

Noise Monitoring Location	Noise Criteria, $L_{eq(30mins), dB(A)}$	Remark
NM2	75	Applicable during 0700 – 1900 hours, Monday to Saturday.
NM6	75	Applicable during 0700 – 1900 hours, Monday to Saturday.

The Event / Action Plan (EAP) for noise monitoring is presented in *Annex F*.

### 3.1.5 *Mitigation Measures*

The mitigation measures in accordance with the EP, EIA and EM&A Manual and their implementation status are presented in *Annex G*.

## 3.2 *CULTURAL HERITAGE*

### 3.2.1 *Vibration Monitoring*

In accordance with the EM&A Manual, vibration monitoring is required and the vibration control limits and vibration monitoring proposal are defined by a specialist for AMO's approval.

The vibration control limits and vibration monitoring proposal are still under discussion with AMO.

Vibration monitoring has not started yet as the site formation and excavation and lateral support works have not commenced yet.

### **3.2.2**      *Mitigation Measures*

Cultural heritage mitigation measures in accordance with the EP, EIA and EM&A Manual were implemented by the Contractor and the implementation status is given in *Annex G*.

### **3.3**            *LANDSCAPE AND VISUAL MONITORING*

In accordance with the EM&A Manual, inspections of affected trees were conducted two times by an experienced and appropriately trained arborist. All irregularities that deviate from the recommended tree protection measures or could impose deleterious impacts on the protected trees were reported. Besides, implementation of mitigation measures for landscape and visual resources recommended in the EIA Report were also monitored during the site inspection.

#### **3.3.1**        *Mitigation Measures*

Landscape and visual mitigation measures in accordance with the EP, EIA and EM&A Manual were implemented by the Contractor and the implementation status is given in *Annex G*.

### **3.4**            *ENVIRONMENTAL REQUIREMENTS IN CONTRACT DOCUMENTS*

The environmental requirements as specified in the contract documents were reviewed and were covered in the EIA's requirements.

**IMPLEMENTATION STATUS ON ENVIRONMENTAL PROTECTION  
REQUIREMENTS**

The Contractor has generally implemented environmental mitigation measures and requirements as stated in the EIA Report, the EP and EM&A Manual and the contract documents. The implementation status during the reporting period is summarized in *Annex G*.

Status of required submissions under the EP during the reporting period is presented in *Table 4.1*.

**Table 4.1**      ***Status of Required Submissions***

<b>EP Condition</b>	<b>Submission</b>	<b>Submission Date</b>
Condition 3.4	First Monthly EM&A Report	14 December 2011

### 5.1 NOISE

A total of 4 sets of 30-minute construction noise measurements were carried out at the monitoring stations (NM2 and NM6) during normal weekdays of the reporting period. The monitoring results together with graphical presentations are presented in *Annex H*. The local impacts observed near the monitoring stations of NM2 and NM6 were summarized below:

- NM2: traffic noise from Old Bailey Street and construction noise from activities from surrounding and project sites including drilling and the use of compressor and breaker.
- NM6: construction noise from activities from surrounding and project sites including the use of compressor and breaker.

No exceedance of Action and Limit Levels of construction noise was recorded during the reporting period.

### 5.2 LANDSCAPE AND VISUAL

The tree inspection was conducted by the arborist on 19 December 2011 and major findings and recommendations in the reporting period are summarized as *Table 5.1*. The tree inspection reports are contained in *Annex J*.

**Table 5.1 Findings of Monthly Tree Inspection in the Reporting Period**

Tree No.	Botanical Name	Overall Health Condition	Arborist's Observation / Recommendations
<i>19 December 2011</i>			
Tree -5	<i>Mangifera indica</i>	Good	-
Tree -6	<i>Aleurites moluccana</i>	Fair	-
Tree-7	<i>Aleurites moluccana</i>	Fair	To remove rubbish from the planter
Tree-8	<i>Plumeria rubra</i>	Fair	-
Tree-9	<i>Araucaria cunninghamia</i>	Fair	To cut off the barbed wire from the tree
Tree-11	<i>Dracaena marginata</i>	Fair	The door of the building should be always locked Removal of the temperate fence is recommended

Findings from the site inspection on the Landscape and Visual resources are summarised in *Annex G*.

The follow-up actions recommended in the November inspection have been implemented.



## 5.3

**CULTURAL HERITAGE**

No vibration monitoring has been conducted during the reporting period as the construction of foundation has not commenced yet.

One site audit was conducted in the reporting period on 20 December 2011 by the Heritage Checker and the audit findings are summarised below:

- Low level plinths to corners of buildings should be protected. The Contractor will provide protection accordingly and will prioritise the buildings where construction work is taking place nearby.

The follow-up actions recommended in the November audit have been implemented.

## 5.4

**WASTE MANAGEMENT**

Wastes generated from this Project include inert construction and demolition (C&D) materials and non-inert C&D materials. Non-inert C&D materials were made up of general refuse, steel and paper/cardboard packaging materials. Steel materials generated from the Project were also grouped into non-inert C&D materials as the materials were not disposed of with other inert C&D materials. With reference to relevant handling records and trip tickets of this Project, the quantities of different types of waste generated in the reporting period are summarised in *Table 5.2*. The non-inert C&D materials and general refuse generated from the Project were disposed of at the SENT Landfill. A total of 18,680 kg of metals (steel materials), 112 kg of paper/cardboard packaging and no plastics were generated during the reporting period.

**Table 5.2** *Quantities of Waste Generated from the Project*

Month / Year	Quantity					
	C&D Materials (inert) <sup>(a)</sup>	C&D Materials (non-inert) <sup>(b)</sup>	Chemical Waste	Recycled materials		
				Paper / cardboard	Plastics	Metals
November 2011 – December 2011	0 tonnes	18.3 tonnes	0 L	112 kg	0 kg	18,680 kg

**Notes:**

(a) Inert C&D materials include bricks, concrete, building debris, rubble and excavated soil. Inert C&D materials will be collected by private licensed collector.

(b) Non-inert C&D materials include steel, paper / cardboard packaging waste, plastics and other wastes such as general refuse. Steel materials generated from the project are grouped into non-inert C&D materials as the materials were not disposed of with other inert C&D materials and were recycled. The non-inert C&D materials other than steel, plastics and paper/cardboard packaging were disposed of at SENT Landfill. 18,680 kg of steel material, 112 kg of paper/cardboard packaging and no plastics was sent to recyclers for recycling during the reporting period.

Joint environmental site inspection was conducted in the reporting period on 20 December 2011. The joint environmental site inspection was carried out by the representatives of the Contractor, IEC and the ET. There was no non-compliance recorded during the site inspections.

Major findings and recommendations are summarized as follows:

20 December 2011

- An opening without cover was observed on a water barrier at the Prison Yard. The Contractor was reminded to cover the opening to avoid the accumulation of stagnant water during rain event.
- The chemical waste store at the Parade Ground was observed to be surrounded by obstacles. The Contractor was recommended to provide proper access to the chemical waste store and relocate the obstacles.

Follow-up actions were undertaken within 3 days after the completion of the site audit as reported by the Contractor.

## 7 ENVIRONMENTAL NON-CONFORMANCE

### 7.1 SUMMARY OF MONITORING EXCEEDANCE

No exceedance of the Action and Limit Levels of construction noise was recorded at monitoring station during the reporting period.

### 7.2 SUMMARY OF ENVIRONMENTAL NON-COMPLIANCE

No non-compliance event was recorded during the reporting period.

### 7.3 SUMMARY OF ENVIRONMENTAL COMPLAINT

No complaint was received during the reporting period.

### 7.4 SUMMARY OF ENVIRONMENTAL SUMMONS AND SUCCESSFUL PROSECUTION

No summons was received during the reporting period.

**8.1 KEY ISSUES FOR THE COMING MONTH**

Works to be undertaken for the coming monitoring periods are summarized in *Table 8.1*.

**Table 8.1 Construction Works to be Undertaken in the Coming One Month**

---

<b>Work to be taken</b>
<ul style="list-style-type: none"><li>• Sundry Enabling/ Opening Up Works for batch 2 to 4</li><li>• Trial pit excavation</li><li>• Precautionary works to buildings to be demolished</li><li>• Demolition Works (including Block 16 &amp; 18, Minor Buildings, Revetment Wall and structures for Phase 2 demolition)</li><li>• Asbestos abatement work</li></ul>

---

Potential environmental impacts arising from the above construction activities are mainly associated with dust, construction noise, site runoff and waste management.

**8.2 MONITORING SCHEDULE FOR THE NEXT MONTH**

The tentative schedule of noise monitoring for the next reporting period is presented in *Annex D*.

**8.3 CONSTRUCTION PROGRAMME FOR THE NEXT MONTH**

The most updated construction programme for the Project is presented in *Annex I*.

## CONCLUSIONS

The *Environmental Monitoring and Audit (EM&A) Report* presents the EM&A works undertaken during the period from 1 December 2011 to 31 December 2011 in accordance with EM&A Manual and the requirement under EP-408/2011.

No exceedance of the Action and Limit Levels of construction noise was recorded at designated monitoring stations during the reporting period.

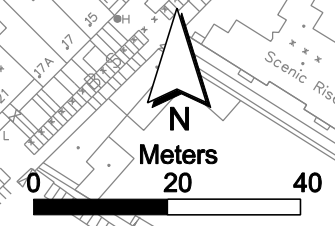
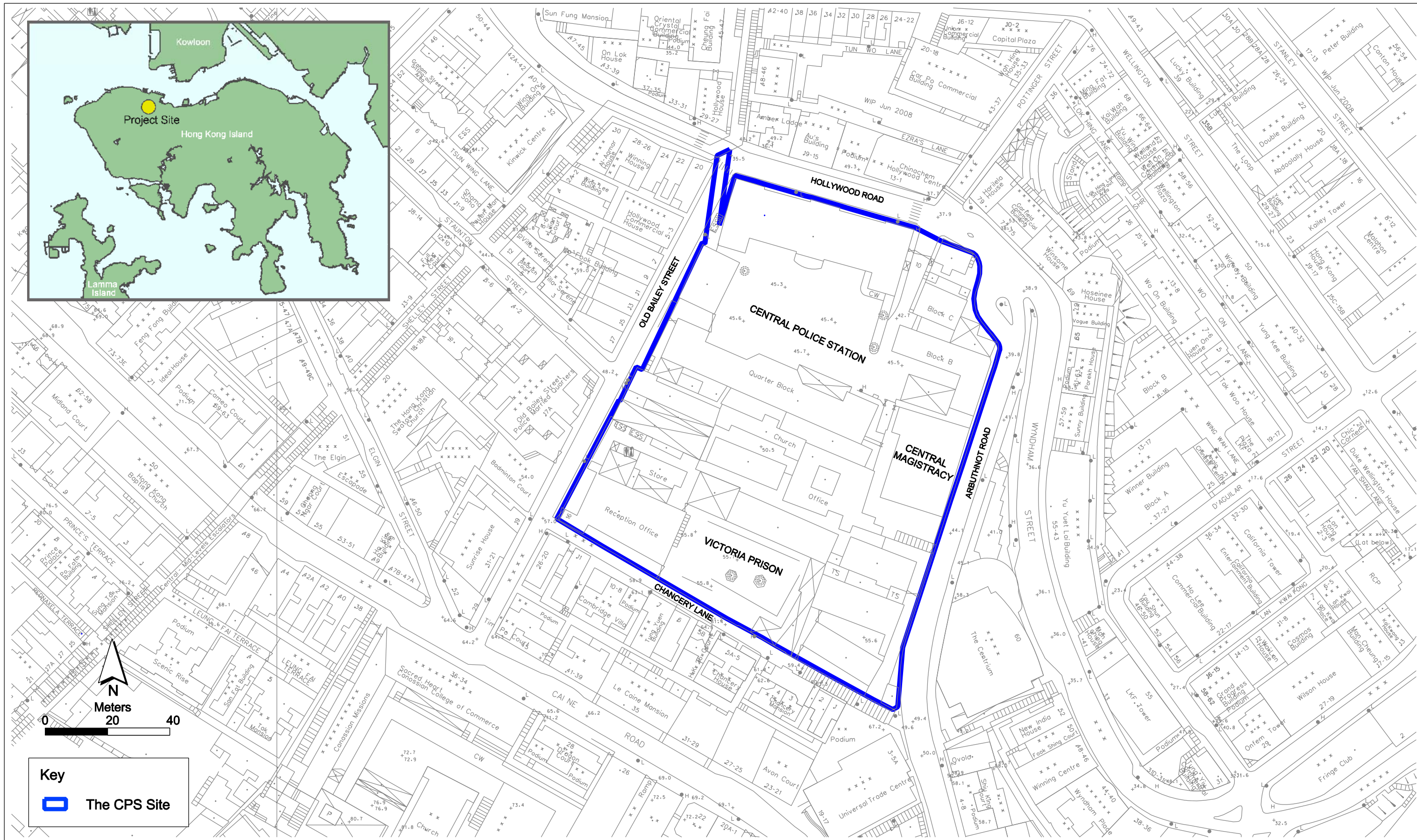
No non-compliance event was recorded during the reporting period.

There was no complaint and summons/prosecution received during the reporting period.

The ET will keep track on the EM&A programme to ensure compliance of environmental requirements and the proper implementation of all necessary mitigation measures.

Annex A

## Locations of Works Areas and the Surroundings



**Key**

 The CPS Site

Annex A1

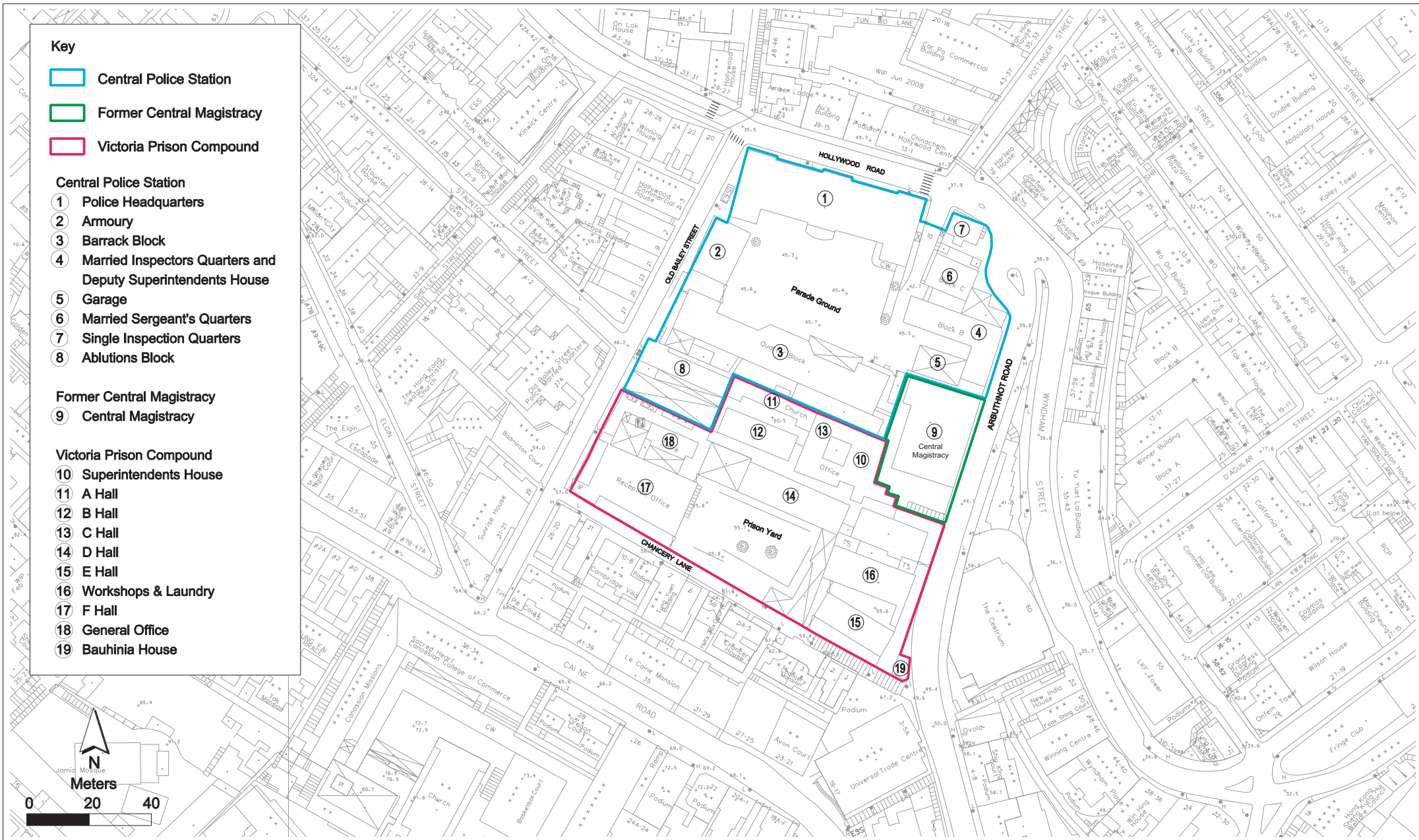
Project Location

**Environmental  
Resources  
Management**



**賽馬會文物保育有限公司**  
The Jockey Club CPS Limited

FILE: 0095646a-A3\_01.dgn  
DATE: 21/11/2011



Annex A2

Declared Monuments within the Project Site

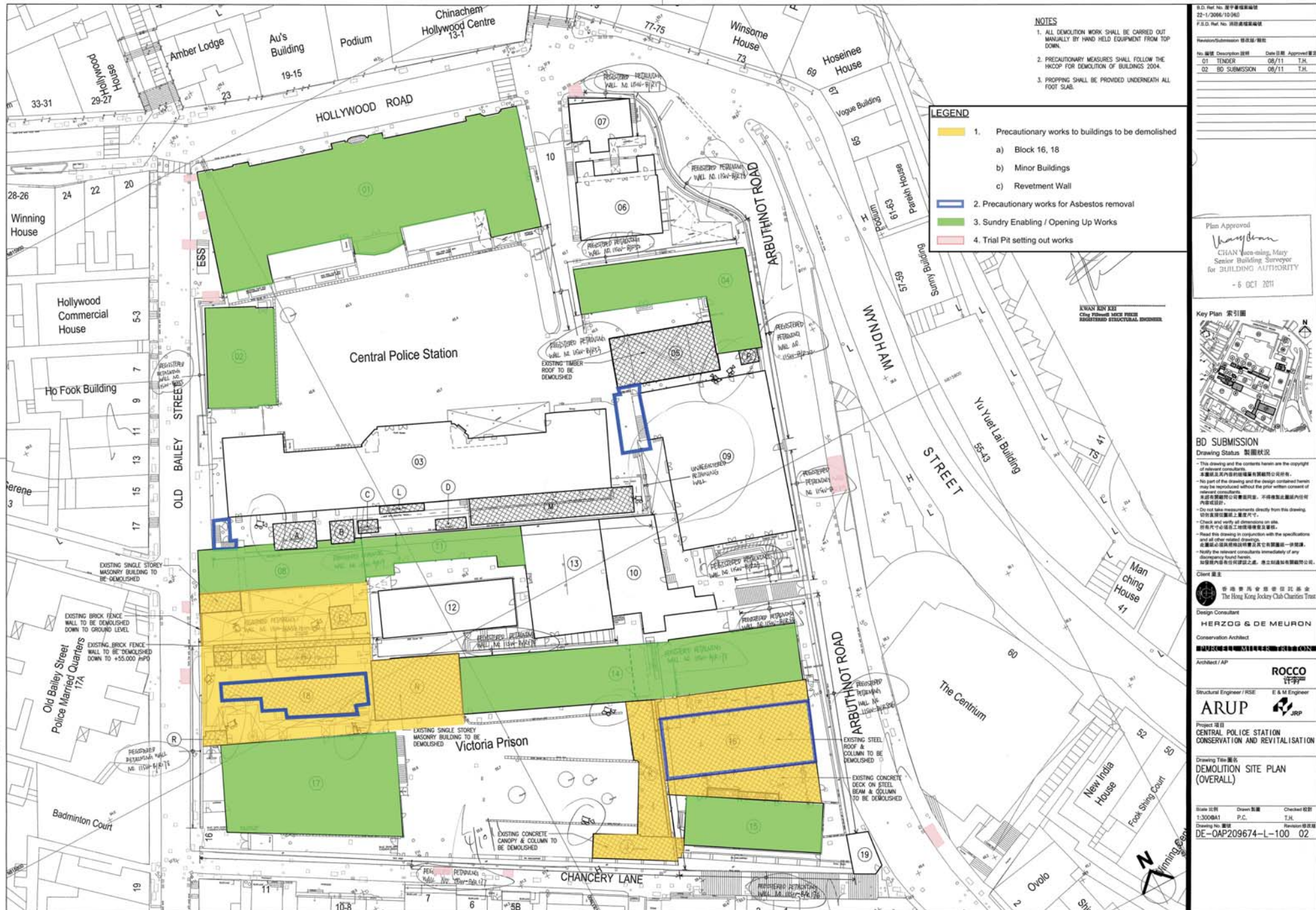
**Environmental Resources Management**



賽馬會文物保育有限公司  
The Jockey Club CPS Limited



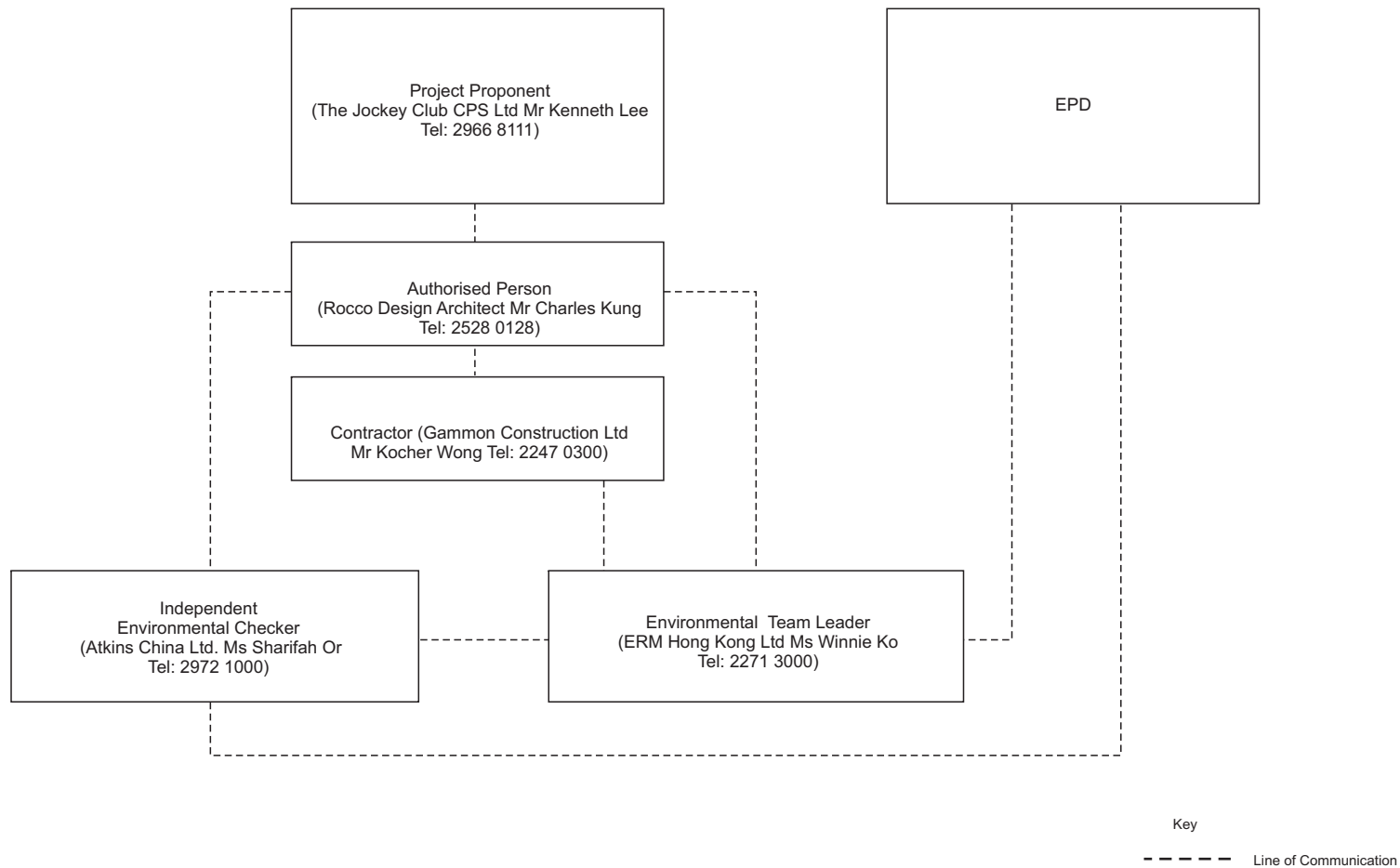
# Site layout plan marked with works ( Dec - 2011)



Annex A3 Site Layout Plan marked with Works

Annex B

## Project Organization Chart and Contact Detail



Annex C

## Locations of Noise Monitoring Stations

**Key**

● Representative Noise Sensitive Receiver

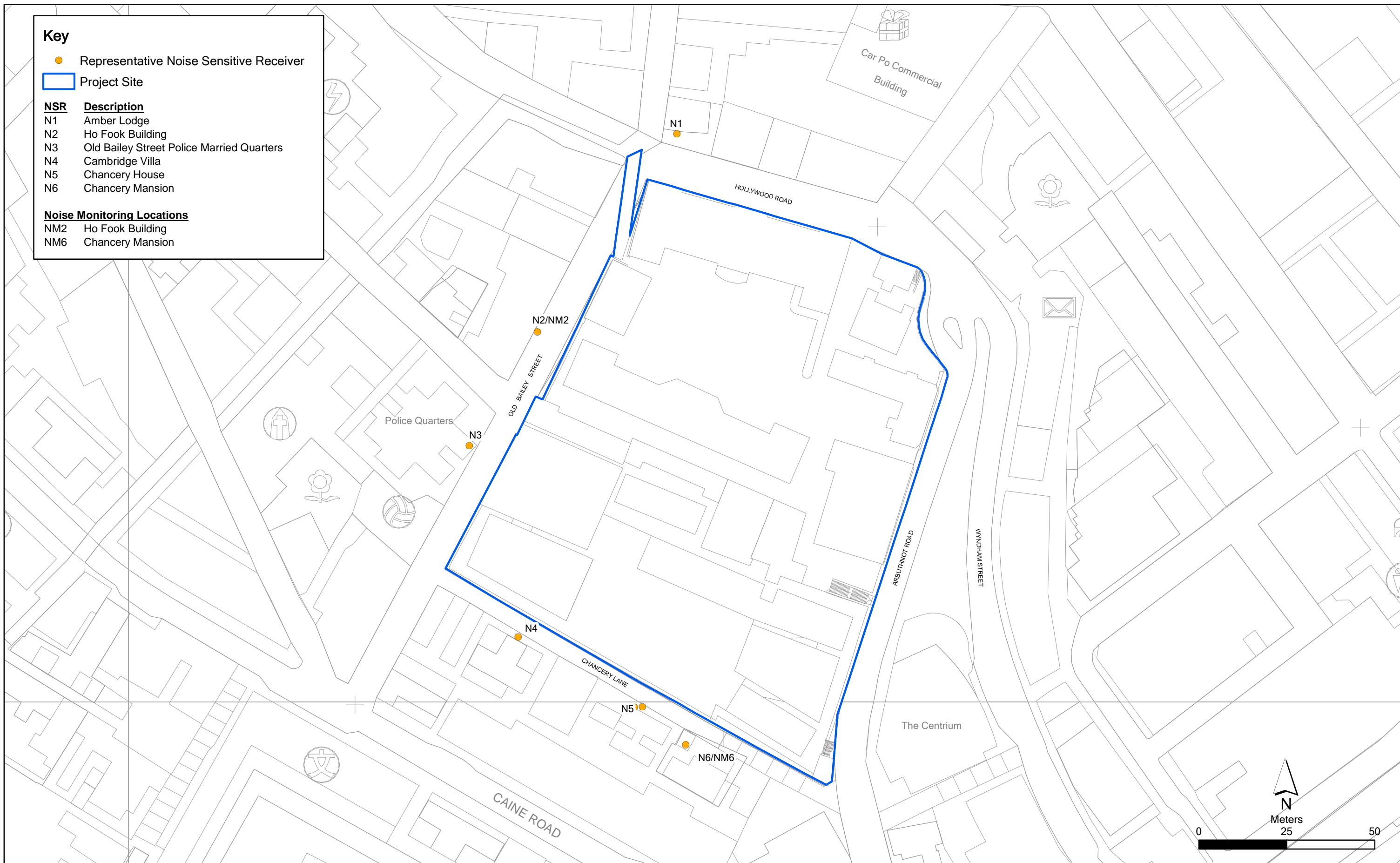
▭ Project Site

**NSR Description**

- N1 Amber Lodge
- N2 Ho Fook Building
- N3 Old Bailey Street Police Married Quarters
- N4 Cambridge Villa
- N5 Chancery House
- N6 Chancery Mansion

**Noise Monitoring Locations**

- NM2 Ho Fook Building
- NM6 Chancery Mansion



Annex C

Location of Representative Noise Sensitive Receivers and Noise Monitoring Locations

File: 0095646\_NSR\_NM.mxd  
Date: 12/01/2012

Environmental Resources Management



賽馬會文物保育有限公司  
The Jockey Club CPS Limited

Annex D

## Monitoring Schedule of the Reporting Period and Next Month

**Central Police Station Compound Coservation and Revitalisation  
(Ho Fook Building - NM2 & Chancery Mansion - NM6)  
Monitoring Schedule for Reporting Month - December 2011**

Sunday	Monday	Tuesday	Wednesday	Thursday	Friday	Saturday
				01-Dec	02-Dec	03-Dec
04-Dec	05-Dec	06-Dec	07-Dec	08-Dec	09-Dec	10-Dec
		Noise Monitoring at NM2 & NM6				
11-Dec	12-Dec	13-Dec	14-Dec	15-Dec	16-Dec	17-Dec
	Noise Monitoring at NM2 & NM6					
18-Dec	19-Dec	20-Dec	21-Dec	22-Dec	23-Dec	24-Dec
			Noise Monitoring at NM2 & NM6			
25-Dec	26-Dec	27-Dec	28-Dec	29-Dec	30-Dec	31-Dec
				Noise Monitoring at NM2 & NM6		

**Central Police Station Compound Coservation and Revitalisation  
(Ho Fook Building - NM2 & Chancery Mansion - NM6)  
Monitoring Schedule for Next Reporting Month - January 2012**

Sunday	Monday	Tuesday	Wednesday	Thursday	Friday	Saturday
01-Jan	02-Jan	03-Jan	04-Jan	05-Jan	06-Jan	07-Jan
				Noise Monitoring at NM2 & NM6		
08-Jan	09-Jan	10-Jan	11-Jan	12-Jan	13-Jan	14-Jan
			Noise Monitoring at NM2 & NM6			
15-Jan	16-Jan	17-Jan	18-Jan	19-Jan	20-Jan	21-Jan
		Noise Monitoring at NM2 & NM6				
22-Jan	23-Jan	24-Jan	25-Jan	26-Jan	27-Jan	28-Jan
						Noise Monitoring at NM2 & NM6
29-Jan	30-Jan	31-Jan				



Annex E

# Calibration Reports for Calibrators and Sound Level Meters

Certificate No. : C113870

## *Certificate of Calibration*

*This is to certify that the equipment*

*Description : Sound Level Calibrator*

*Manufacturer : Rion*

*Model No. : NC-73*

*Serial No. : 10997142*

*has been calibrated for the specific items and ranges.*

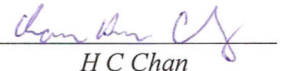
*The results are shown in the Calibration Report No. C113870.*

*The equipment is supplied by*

*Co. Name : Envirotech Services Co.*

*Address : Shop 6, G/F., Casio Mansion, 209 Shaukeiwan Road,  
Hong Kong*

*Date of Issue : 11 July 2011*

*Certified by :*   
H C Chan

Report No. : C113870

## Calibration Report

### ITEM TESTED

DESCRIPTION : Sound Level Calibrator  
MANUFACTURER : Rion  
MODEL NO. : NC-73  
SERIAL NO. : 10997142

### TEST CONDITIONS

AMBIENT TEMPERATURE :  $(23 \pm 2)^{\circ}\text{C}$  RELATIVE HUMIDITY :  $(55 \pm 20)\%$   
LINE VOLTAGE : ---

### TEST SPECIFICATIONS

Calibration

DATE OF TEST : 11 July 2011

JOB NO. : IC11-1713

### TEST RESULTS

The results apply to the particular unit-under-test only.  
All results are within manufacturer's specification.  
The results are detailed in the subsequent page(s).

The test equipment used for calibration are traceable to National Standards via :

- The Government of The Hong Kong Special Administrative Region Standard & Calibration Laboratory
- The Bruel & Kjaer Calibration Laboratory, Denmark
- Rohde & Schwarz Laboratory, Germany
- Fluke Everett Service Center, USA
- Agilent Technologies, USA

Tested by :

  
KC Lee

Date : 11 July 2011

The test equipment used for calibration are traceable to the National Standards as specified in this report.  
This report shall not be reproduced except in full and with prior written approval from this laboratory.

# Calibration Report

1. The unit-under-test (UUT) was allowed to stabilize in the laboratory for over 24 hours before the commencement of the test.
2. The results presented are the mean of 3 measurements at each calibration point.
3. Test equipment :

<u>Equipment ID</u>	<u>Description</u>	<u>Certificate No.</u>
TST150A	Measuring Amplifier	C101008
CL130	Universal Counter	C113350
CL281	Multifunction Acoustic Calibrator	C1006860

4. Test procedure : MA100N.

5. Results :

- 5.1 Sound Level Accuracy

- 5.1.1 Before Adjustment

UUT Nominal Value	Measured Value (dB)	Mfr's Spec. (dB)	Uncertainty of Measured Value (dB)
94 dB, 1 kHz	94.3	± 0.5	± 0.2

- 5.1.2 After Adjustment

UUT Nominal Value	Measured Value (dB)	Mfr's Spec. (dB)	Uncertainty of Measured Value (dB)
94 dB, 1 kHz	94.0	± 0.5	± 0.2

- 5.2 Frequency Accuracy

- 5.2.1 Before Adjustment

UUT Nominal Value (kHz)	Measured Value (kHz)	Mfr's Spec.	Uncertainty of Measured Value (Hz)
1	0.991	1 kHz ± 2 %	± 1

- 5.2.2 After Adjustment

UUT Nominal Value (kHz)	Measured Value (kHz)	Mfr's Spec.	Uncertainty of Measured Value (Hz)
1	0.991	1 kHz ± 2 %	± 1

The test equipment used for calibration are traceable to the National Standards as specified in this report.  
This report shall not be reproduced except in full and with prior written approval from this laboratory.

Report No. : C113870

## *Calibration Report*

Remark : - The uncertainties are for a confidence probability of not less than 95 %.

Note :

The values given in this Calibration Report only relate to the values measured at the time of the test and any uncertainties quoted will not include allowance for the equipment long term drift, variations with environment changes, vibration and shock during transportation, overloading, mis-handling, or the capability of any other laboratory to repeat the measurement. Sun Creation Engineering Limited shall not be liable for any loss or damage resulting from the use of the equipment.

---

The test equipment used for calibration are traceable to the National Standards as specified in this report.  
This report shall not be reproduced except in full and with prior written approval from this laboratory.

Calibration and Testing Laboratory of Sun Creation Engineering Limited

c/o 4/F, Tsing Shan Wan Exchange Building, 1 Hing On Lane, Tuen Mun, New Territories, Hong Kong

Tel: 2927 2606

Fax: 2744 8986

E-mail: callab@suncreation.com

Website: www.suncreation.com

Certificate No. : C113827

## *Certificate of Calibration*

*This is to certify that the equipment*

*Description : Sound Level Meter*

*Manufacturer : Rion*

*Model No. : NL-31*

*Serial No. : 00603867*

*has been calibrated for the specific items and ranges.  
The results are shown in the Calibration Report No. C113827.*

*The equipment is supplied by*

*Co. Name : Envirotech Services Co.*

*Address : Shop 6, G/F., Casio Mansion, 209 Shaukeiwan Road,  
Hong Kong*

*Date of Issue : 8 July 2011*

*Certified by :*   
H C Chan

Report No. : C113827

## Calibration Report

### ITEM TESTED

DESCRIPTION : Sound Level Meter  
MANUFACTURER : Rion  
MODEL NO. : NL-31  
SERIAL NO. : 00603867

### TEST CONDITIONS

AMBIENT TEMPERATURE :  $(23 \pm 2)^{\circ}\text{C}$  RELATIVE HUMIDITY :  $(55 \pm 20)\%$   
LINE VOLTAGE : ---

### TEST SPECIFICATIONS

Calibration check

DATE OF TEST : 7 July 2011

JOB NO. : IC11-1657

### TEST RESULTS

The results apply to the particular unit-under-test only.  
All results are within manufacturer's specification.  
The results are detailed in the subsequent page(s).

The test equipment used for calibration are traceable to National Standards via :

- The Government of The Hong Kong Special Administrative Region Standard & Calibration Laboratory
- The Bruel & Kjaer Calibration Laboratory, Denmark
- Rohde & Schwarz Laboratory, Germany
- Fluke Everett Service Center, USA
- Agilent Technologies, USA

Tested by :

  
KC Lee

Date : 8 July 2011

The test equipment used for calibration are traceable to the National Standards as specified in this report.  
This report shall not be reproduced except in full and with prior written approval from this laboratory.

## Calibration Report

1. The unit-under-test (UUT) was allowed to stabilize in the laboratory for over 24 hours, and switched on to warm up for over 10 minutes before the commencement of the test.
2. Self-calibration was performed before the test.
3. The results presented are the mean of 3 measurements at each calibration point.
4. Test equipment :

<u>Equipment ID</u>	<u>Description</u>	<u>Certificate No.</u>
CL280	40 MHz Arbitrary Waveform Generator	C110018
CL281	Multifunction Acoustic Calibrator	C1006860

5. Test procedure : MA101N.

6. Results :

### 6.1 Sound Pressure Level

#### 6.1.1 Reference Sound Pressure Level

UUT Setting				Applied Value		UUT Reading (dB)	IEC 61672 Class 1 Spec. (dB)
Range (dB)	Mode	Frequency Weighting	Time Weighting	Level (dB)	Freq. (kHz)		
30 - 120	L <sub>A</sub>	A	Fast	94.00	1	94.0	± 1.1

#### 6.1.2 Linearity

UUT Setting				Applied Value		UUT Reading (dB)
Range (dB)	Mode	Frequency Weighting	Time Weighting	Level (dB)	Freq. (kHz)	
30 - 120	L <sub>A</sub>	A	Fast	94.00	1	94.0 (Ref.)
				104.00		104.0
				114.00		113.9

IEC 61672 Class 1 Spec. : ± 0.6 dB per 10 dB step and ± 1.1 dB for overall different.

### 6.2 Time Weighting

UUT Setting				Applied Value		UUT Reading (dB)	IEC 61672 Class 1 Spec. (dB)
Range (dB)	Mode	Frequency Weighting	Time Weighting	Level (dB)	Freq. (kHz)		
30 - 120	L <sub>A</sub>	A	Fast	94.00	1	94.0	Ref.
			Slow			93.9	± 0.3



## Calibration Report

### 6.3 Frequency Weighting

#### 6.3.1 A-Weighting

UUT Setting				Applied Value		UUT Reading (dB)	IEC 61672 Class 1 Spec. (dB)
Range (dB)	Mode	Frequency Weighting	Time Weighting	Level (dB)	Freq.		
30 - 120	L <sub>A</sub>	A	Fast	94.00	63 Hz	67.7	-26.2 ± 1.5
					125 Hz	77.7	-16.1 ± 1.5
					250 Hz	85.3	-8.6 ± 1.4
					500 Hz	90.7	-3.2 ± 1.4
					1 kHz	94.0	Ref.
					2 kHz	95.3	+1.2 ± 1.6
					4 kHz	95.1	+1.0 ± 1.6
					8 kHz	93.0	-1.1 (+2.1 ; -3.1)
					12.5 kHz	90.1	-4.3 (+3.0 ; -6.0)

#### 6.3.2 C-Weighting

UUT Setting				Applied Value		UUT Reading (dB)	IEC 61672 Class 1 Spec. (dB)
Range (dB)	Mode	Frequency Weighting	Time Weighting	Level (dB)	Freq.		
30 - 120	L <sub>C</sub>	C	Fast	94.00	63 Hz	93.1	-0.8 ± 1.5
					125 Hz	93.8	-0.2 ± 1.5
					250 Hz	94.0	0.0 ± 1.4
					500 Hz	94.0	0.0 ± 1.4
					1 kHz	94.0	Ref.
					2 kHz	93.9	-0.2 ± 1.6
					4 kHz	93.3	-0.8 ± 1.6
					8 kHz	91.1	-3.0 (+2.1 ; -3.1)
					12.5 kHz	88.2	-6.2 (+3.0 ; -6.0)

The test equipment used for calibration are traceable to the National Standards as specified in this report. This report shall not be reproduced except in full and with prior written approval from this laboratory.

# Calibration Report

Remarks : - Mfr's Spec. : IEC 61672 Class 1

- Uncertainties of Applied Value : 94 dB : 63 Hz - 125 Hz :  $\pm 0.35$  dB  
250 Hz - 500 Hz :  $\pm 0.30$  dB  
1 kHz :  $\pm 0.20$  dB  
2 kHz - 4 kHz :  $\pm 0.35$  dB  
8 kHz :  $\pm 0.45$  dB  
12.5 kHz :  $\pm 0.70$  dB  
104 dB : 1 kHz :  $\pm 0.10$  dB (Ref. 94 dB)  
114 dB : 1 kHz :  $\pm 0.10$  dB (Ref. 94 dB)

- The uncertainties are for a confidence probability of not less than 95 %.

Note :

The values given in this Calibration Report only relate to the values measured at the time of the test and any uncertainties quoted will not include allowance for the equipment long term drift, variations with environment changes, vibration and shock during transportation, overloading, mis-handling, or the capability of any other laboratory to repeat the measurement. Sun Creation Engineering Limited shall not be liable for any loss or damage resulting from the use of the equipment.



## RION CO., LTD.

3-20-41 Higashimotomachi Kokubunji Tokyo 185-8533  
Phone:042(359)7888, Facsimile:042(359)7442

# Certificate of Calibration

**Name** : Precision sound level meter  
**Model** : NL-52      S/No. : 00710259  
( NX-42EX installed )  
**Microphone** : UC-59      S/No. : 02695  
**Preamplifier** : NH-25      S/No. : 10253

**Date of Calibration** : September, 20, 2011

We hereby certify that the above product was tested and calibrated according to the prescribed Rion procedures, and that it fulfills specification requirements.

The measuring equipment and reference devices used for testing and calibrating this unit are managed under the Rion traceability system and are traceable according to official Japanese standards and official standards of countries belonging to the International Committee of Weights and Measures.

  
**RION CO., LTD.**

*T. Kano*  
Manager, Quality Control Department

Annex F

## Event / Action Plans for Noise

**Table F** *Event and Action Plan for Construction Noise Monitoring*

Event	Action			
	Environmental Team (ET)	Independent Environmental Checker (IEC)	Authorised Person (AP)	Contractor
<b>Action Level</b>	<ol style="list-style-type: none"> <li>1. Notify IEC and Contractor;</li> <li>2. Carry out investigation;</li> <li>3. Report the results of investigation to the IEC, AP and Contractor;</li> <li>4. Discuss with the Contractor and formulate remedial measures;</li> <li>5. Increase monitoring frequency to check mitigation effectiveness.</li> </ol>	<ol style="list-style-type: none"> <li>1. Review the analysed results submitted by the ET;</li> <li>2. Review the proposed remedial measures by the Contractor and advise the AP accordingly;</li> <li>3. Supervise the implementation of remedial measures.</li> </ol>	<ol style="list-style-type: none"> <li>1. Confirm receipt of notification of failure in writing;</li> <li>2. Notify Contractor;</li> <li>3. Require Contractor to proposed remedial measures for the analysed noise problem;</li> <li>4. Ensure remedial measures are properly implemented.</li> </ol>	<ol style="list-style-type: none"> <li>1. Submit noise mitigation proposals to IEC;</li> <li>2. Implement noise mitigation proposals.</li> </ol>
<b>Limit Level</b>	<ol style="list-style-type: none"> <li>1. Identify source;</li> <li>2. Inform IEC and AP;</li> <li>3. Repeat measurements to confirm findings;</li> <li>4. Increase monitoring frequency;</li> <li>5. Carry out analysis of Contractor's working procedures to determine possible mitigation to be implemented;</li> <li>6. Inform IEC, AP and EPD the causes and actions taken for the exceedances;</li> <li>7. Assess effectiveness of Contractor's remedial actions and keep IEC, EPD and AP informed of the results;</li> <li>8. If exceedance stops, cease additional monitoring.</li> </ol>	<ol style="list-style-type: none"> <li>1. Discuss amongst AP, ET, and Contractor on the potential remedial actions;</li> <li>2. Review Contractors remedial actions whenever necessary to assure their effectiveness and advise the AP accordingly;</li> <li>3. Supervise the implementation of remedial measures.</li> </ol>	<ol style="list-style-type: none"> <li>1. Confirm receipt of notification of failure in writing;</li> <li>2. Notify Contractor;</li> <li>3. Require Contractor to propose remedial measures for the analysed noise problem;</li> <li>4. Ensure remedial measures properly implemented;</li> <li>5. If exceedance continues, consider what portion of the work is responsible and instruct the Contractor to stop that portion of work until the exceedance is abated.</li> </ol>	<ol style="list-style-type: none"> <li>1. Take immediate action to avoid further exceedance;</li> <li>2. Submit proposals for remedial actions to IEC within 3 working days of notification;</li> <li>3. Implement the agreed proposals;</li> <li>4. Resubmit proposals if problem still not under control;</li> <li>5. Stop the relevant portion of works as determined by the AP until the exceedance is abated.</li> </ol>

Annex G

## Summary of Implementation Status

**Annex G Implementation Schedule for Environmental Protection Measures**

EIA Ref.	EM&A Ref.	Recommended Mitigation Measures	Location	When to Implement the Measure	Status
<b>Cultural Heritage</b>					
S3.9.1	S3.2.6	Subject to the outcome of the archaeological investigation, if archaeological deposits are identified to be impacted by the proposed development, appropriate mitigation measures will be recommended and agreed with AMO.	To be advised	During detailed design and construction	√
S3.9.2	S3.3.1	<u>Vibration Monitoring</u> A baseline condition survey and baseline vibration impact will be conducted by a specialist for the approval of AMO and Buildings Department prior to commencement of the construction works to define the vibration control limits and recommend a vibration monitoring proposal for the concerned historic buildings and structures in and outside CPS for AMO's prior approval before commencement of the construction works.	Historic buildings and structures in CPS, the granite walls at Old Bailey Street and the proposed Grade 3 historic building (No. 20 Hollywood Road)	During detailed design and construction	N/A – No construction has commenced. The vibration monitoring proposal was under preparing during the reporting period.
S3.9.2	S3.3.3	<u>Compliance of the Approved Measures and Auditing</u> Staff training by an experience building conservation expert or relevant competent person(s) in the environmental team of the project should be provided to the on-site staffs, contractors, sub-contractors and workers of the project before commencement of works to ensure their full understanding of the approved protection schedule, restoration proposal and work methodologies related to cultural heritage, and their respective responsibilities in the implementation of the environmental protection measures.  Regular site audit for cultural heritage should be carried out in the construction phase by an experience building conservation expert in the environmental team ("the Heritage Checker") to investigate the site practice of the contractors and workers and their compliance of the approved work methodologies with respect of conservation works, mitigations for cultural heritage and any related works. A detailed proposal of the regular audit such as methodology (e.g. performance	Whole site	Prior to and during construction	√

EIA Ref.	EM&A Ref.	Recommended Mitigation Measures	Location	When to Implement the Measure	Status
		<p>and monitoring indicators, control tools, frequency of the audit, etc.) and the conservation professionals to be engaged should be agreed with AMO prior to work commencement.</p> <p>The Heritage Checker shall also attend the regular site meetings with AMO and report the compliance and effectiveness of the mitigation measures for cultural heritage.</p>			
S3.9.3	S3.3.4	<p><u>Archival Recording</u></p> <p>An archival recording should be conducted to provide a detailed reference for the update of the Conservation Management Plan and inventory of historical features of the monuments, the preparation of as-built drawings showing the condition of the historic buildings and structures after the completion of the construction works. These archival records will be a reference source for future maintenance of the character defining elements, conservation of the monuments, interpretation and conservation education of the Site. The archival recording shall include but not limit to the video and photographic recording on the detailed process of the repair trials for different kinds of historical features, conservation works of character defining elements and historic fabrics of the monuments, and a written records of any new changes to the detailed design made in the construction phase illustrate with photos and drawings. A full set of the archives records (including both hard and soft copies) should be submitted to the AMO for approval after the work completion for record purpose. Any new findings related to the conservation of built heritage in the Site identified during the detailed design stage and construction phases shall be properly recorded in details for notification to the AMO and update of the Conservation Management Plan.</p>	Whole Site	During detailed design, construction and prior to operation	N/A – Archival recording will be conducted at later stage.
S3.7.3	-	<p><u>General Construction Methods</u></p> <p>Prior to the commencement of the modification/refurbishment works at an existing building or structure (e.g. masonry walls near the Old Bailey Wing) , a site survey will be carried out by the design team, and all building dimensions and levels of the building/structure shown will be checked and confirmed by the contractor. Non-percussive piling</p>	Whole site	During construction	N/A – The site survey is currently undertaken by the Contractor.



EIA Ref.	EM&A Ref.	Recommended Mitigation Measures	Location	When to Implement the Measure	Status
		<p>methods will be adopted for the construction of the foundation for the new buildings. Protective and precaution measures to the existing buildings and structure adjacent to the work area (including the proposed Grade 3 historic building (No. 20 Hollywood road) and the granite boundary walls between the Ablutions Block of the police station (building no. 08) and the General Office of the prison area (building no. 18) which is adjacent to the new construction of the Old Bailey Wing and for an old granite walls at Old Bailey Street within 15m from the new construction) shall be provided to avoid damage to the existing features and to safeguard the structural integrity during the course of construction. Small scale handheld pneumatic tools with minimal vibration impact to the existing buildings/ structures are selected so as to have a better logistic and handling at the existing buildings and structures, which usually have only narrow working areas. In cases of the local demolition of structural elements, demountable platforms will be erected to temporarily support the affected area and divert the loading from above to avoid instability and create excessive cracking and settlement of the building/structure.</p>			
S3.7.1 & 3.7.2	-	<p>Implementation and update of the Conservation Management Plan (CMP). Any new findings related to the conservation of the built heritage in the site identified during the detailed design and construction stage shall be properly recorded in details for the notification to the AMO and update in the CMP. After the construction, a cartographic and photographic recording on the restored historic buildings, historic features and the site shall be conducted and the following records shall be included into the CMP as appendices for updating and record purpose:</p> <ul style="list-style-type: none"> <li>• one set of measured drawings and photographic records showing the as-built condition of historic buildings and structures; and</li> <li>• an updated inventory list of the historic features together with the cross referenced location plans and photo records.</li> </ul> <p>One set of updated CMP shall be submitted to the AMO for approval before the operation stage of the project.</p>	Whole site	During detailed design, construction, post-construction and operation	N/A – No construction has commenced. The CMP will be implemented and updated at later stage.

EIA Ref.	EM&A Ref.	Recommended Mitigation Measures	Location	When to Implement the Measure	Status
<i>Landscape &amp; Visual</i>					
S4.7.27	-	<p><u><i>In-situ Tree Protection - Cordon Zone (CZ)</i></u></p> <p>Cordon off each tree along its drip line (below the crown) with a chain-link fencing of 2.5 m height with padlocked gate, allowing limited access to area only to authorized persons. The base of the perimeter fence will be sealed up to 30 cm height to ensure that no construction drainage water will enter. If grouting is to be conducted less than 5 m from the edge of the CZ, a waterproof membrane will be installed below the ground to a depth of 1.5 m on the outer edge of the CZ to prevent the subsurface lateral movement of contaminated construction wastewater from intruding the soil inside the CZ.</p>	Whole site	During construction	√
S4.7.2	-	<p><u><i>In-situ Tree Protection - Advanced &amp; Phased Root Pruning</i></u></p> <p>All edges of the CZ that will be affected by excavation will undergo root pruning by a trained arborist or horticulturist, in advance of the earth work. The entire affected length of the CZ, plus 3 m additional length at both ends, shall be designated as the root pruning segment (RPS). The require trench will be opened manually in the RPS, be 1.5 m deep and 1 m wide, and closed on the same day after pruning with a good soil mix. All roots with a diameter &gt;20 mm encountered in the course of trench opening shall be cut flushed with the inner wall of the trench. If the RPS exceeds one-quarter of the CZ circumference, the root pruning should be conducted in two stages. Each phase will tackle half of the RPS length. After the first phase, the tree will be allowed to recuperate for not less than four months before the second phase root pruning is conducted. The RPS shall be protected by sheet piles along the outer edge. The rig that installs the piles and the associated operations shall not intrude into the CZ or injure the protected tree.</p>	Whole site	During construction	N/A – No construction work has commenced.
S4.7.2	-	<p><u><i>In-situ Tree Protection - Foliage cleansing system</i></u></p> <p>A sprinkler cleansing system will be installed either in the crown of the tree or at a suitable location on an adjacent building to provide the</p>	Whole site	During construction	N/A – the sprinkler cleaning system is installing during the reporting period.

EIA Ref.	EM&A Ref.	Recommended Mitigation Measures	Location	When to Implement the Measure	Status
		means to wash the foliage of the accumulated dust when necessary, particularly in the dry season.			
S4.7.2	S4	<p><u>In-situ Tree Protection - Monthly inspection</u></p> <p>Monthly inspection of affected trees by an experienced and appropriately trained arborist or horticulturist using Form 1 – Tree Group Inspection Form and Form 2 – Tree Risk Assessment Form developed by Development Bureau (<a href="http://www.trees.gov.hk/en/doc/TRAGuideline_July2010version_combine.pdf">http://www.trees.gov.hk/en/doc/TRAGuideline_July2010version_combine.pdf</a>) or a form designed by a tree expert and approved by Tree Management Office. All irregularities that deviate from the recommended tree protection measures, or could impose deleterious impacts on the protected trees, must be reported to the authorized person or the tree expert within two days.</p>	Whole site	During construction	√
S4.7.2	-	<p><u>Light Control</u></p> <p>Control of night-time lighting shall be implemented to minimise impact to adjacent VSRs.</p>	Whole site	During construction and operation	N/A – No construction work has commenced.
S4.7.2	S4	<p><u>Compensatory Tree Planting</u></p> <p>A new planting site has been identified for compensatory tree planting in the Parade Ground. The planting is to compensate for felling of T10. The existing tree site will be enlarged to become a wide tree strip to accommodate at least six trees. The entire strip of land that accommodates T1 to T4 should be revamped to improve the soil condition for future tree growth.</p> <p>The new tree strip should be 4 m wide and covered by porous unit pavers to permit the entry of rain and irrigation water and air exchange between the soil and the atmosphere. The unit pavers should be supported by small columns to create a vault-like structure so as to avoid compaction of the underlying soil due to pedestrian trampling. The unit pavers will be movable to provide access to the soil underneath so that fertilizers and conditioners could be added on a</p>	At identified compensatory tree planting location at the Parade Ground	During detailed design and construction	N/A – Compensatory Tree Planting will be conducted at later stage.

EIA Ref.	EM&A Ref.	Recommended Mitigation Measures	Location	When to Implement the Measure	Status
		<p>regular basis. The air conditioner unit currently located near the proposed planting site should also be removed. This new tree planting site should also be provided with proper irrigation.</p> <p>Pursuant to the "Environment, Transport and Works Bureau Technical Circular (Works) No. 3/2006 Tree Preservation", the compensation ratio should preferably be 1:1 according to trunk girth. T10 has a DBH of 20 cm (Table 4.3), and it is proposed that six trees of heavy standard size be planted, each with a DBH of around 10 cm and root balls of not less than 0.75 m diameter and 0.75 m depth. Since the aggregate DBH of the new trees would be 60 cm, the rate of compensation is equivalent to three times the DBH of T10, far beyond the requirements</p> <p>The six replacement trees should be planted in the new tree strip in two staggered rows, maximising distance between each tree to avoid mutual interference in the future. It is recommended that the species selected should have a small final dimension of less than 10 m height given the proximity to built structures such as the retaining wall and buildings. Two each of the outstanding and related flowering tree species connected to local natural history are suggested::</p> <ul style="list-style-type: none"> <li>- <i>Bauhinia 'Blakeana'</i> a native evergreen species with deep mauve flowers and an exceptionally long flowering period from late autumn to early spring.</li> <li>- <i>Bauhinia purpure</i>, a native evergreen with lighter purple flowers from late autumn to early winter.</li> <li>- <i>Bauhinia variegata</i>, an exotic deciduous species, with pale pinkish flowers in spring to early summer often when the tree has little or no leaves.</li> </ul>			
S4.7.2	S4	<p><u>Vertical Greening</u></p> <p>Within the limitations of the conservation of the CPS character, greening of vertical structures should be provided where possible. As such it is recommended that the inner southern wall of the Site be planted as a green wall. The plantings should be inserted in between</p>	Inner Southern Wall	During detailed design and construction	N/A – No vertical greening was conducted during the reporting month.

EIA Ref.	EM&A Ref.	Recommended Mitigation Measures	Location	When to Implement the Measure	Status
		each of the large protruding piers and an offset be made from both the top and bottom edge so that old and new are equally visible. An independent frame should be strategically positioned in order to ensure minimal disturbance to the original wall, and provide the main structural support and planting surface for the green wall. The frame on to which the new green will be planted should contain its own irrigation system so that moisture for the plants will remain mainly on the planting surface and not the exiting wall behind. The planting chosen should be appropriate to the Hong Kong climate, requiring relatively little maintenance to sustain the quality of both plants and wall.			
S4.7.2	-	<p><i>New Custom Paving</i></p> <p>New, Porous, Patterned, High Quality, Concrete Custom Pavers should replace most of the existing paving in the open spaces.</p>	Whole site	During detailed design and construction	N/A – No custom paving was conducted during the reporting month.
S4.7.2	S4	<p><u><i>In-situ Tree Protection - Quarterly inspection</i></u></p> <p>Quarterly Inspection of affected and newly planted trees by an experienced and appropriately trained arborist or horticulturist using Form 1 – Tree Group Inspection Form and Form 2 – Tree Risk Assessment Form developed by Development Bureau (<a href="http://www.trees.gov.hk/en/doc/TRAGuideline_July2010version_combine.pdf">http://www.trees.gov.hk/en/doc/TRAGuideline_July2010version_combine.pdf</a>) or a form designed by a tree expert and approved by Tree Management Office for a period of 12 months after construction.</p>	Whole site	During post construction and operation	N/A – The quarterly inspection will be conducted at later stage.
<i>Noise</i>					
S5.9	-	<p>The following site practices should be followed during the construction of the Project:</p> <ul style="list-style-type: none"> <li>• Only well-maintained plant will be operated on-site and plant will be serviced regularly during the construction phase;</li> <li>• Silencers or mufflers on construction equipment will be utilised and will be properly maintained during the construction phase;</li> <li>• Mobile plant, if any, will be sited as far away from NSRs as</li> </ul>	Whole Site	During construction	N/A – No construction work has commenced.

EIA Ref.	EM&A Ref.	Recommended Mitigation Measures	Location	When to Implement the Measure	Status
		<p>possible;</p> <ul style="list-style-type: none"> <li>Machines and plant (such as trucks) that may be in intermittent use will be shut down between work periods or will be throttled down to a minimum;</li> <li>Plant known to emit noise strongly in one direction will, wherever possible, be orientated so that the noise is directed away from the nearby NSRs; and</li> <li>Material stockpiles and other structures will be effectively utilised, wherever practicable, in screening noise from on-site construction activities.</li> </ul>			
S5.9	-	Noise insulating sheet would be adopted for certain PME (eg drill rig, excavator for demolition of existing structures, etc). The noise insulating sheet should be deployed such that there would be no opening or gaps on the joints.	Whole Site	During construction	N/A – No construction work has commenced.
S5.9	-	Use temporary noise barriers to mitigate the noise impact arising from the construction works, particularly for low-rise NSRs. Movable noise barriers of 3 m in height with skid footing should be used and located within a few metres of stationary plant and mobile plant such that the line of sight to the NSR is blocked by the barriers. The length of the barrier should be at least five times greater than its height. The noise barrier material should have a superficial surface density of at least 7 kg m <sup>2</sup> and have no openings or gaps.	Whole Site	During construction	N/A – No construction work has commenced.
S5.9	-	Use quiet PME as far as practicable to mitigate the construction noise impact.	Whole Site	During construction	N/A – No construction work has commenced.
S5.9	-	Scheduling of construction activities with identified grouping of PMEs.	Whole Site	During construction	N/A – No construction work has commenced.
S5.11	S5	Weekly noise monitoring will be undertaken at the representative NSRs N2 Ho Fook Building and N5 Chancery House. Monthly site audits will be conducted to ensure that the recommended mitigation measures are properly implemented during the construction stage.	Whole Site	During construction	√
<i>Air Quality</i>					
S6.8.1	-	Dust control measures stipulated in the <i>Air Pollution Control (Construction Dust) Regulation</i> will be implemented during the	Whole Site	During construction	N/A – No construction work has commenced.

EIA Ref.	EM&A Ref.	Recommended Mitigation Measures	Location	When to Implement the Measure	Status
		construction phase to control the potential fugitive dust emissions.			
S6.8.1	-	In particular: Temporary stockpiles of dusty materials will be either covered entirely by impervious sheets; placed in an area sheltered on the top and three sides; or sprayed with water to maintain the entire surface wet at all the time.	Whole Site	During construction	N/A – No construction work has commenced.
S6.8.1	-	Impervious sheet will be provided for skip hoist for material transport.	Whole Site	During construction	N/A – No construction work has commenced.
S6.8.1	-	Vehicle washing facilities will be provided at the designated vehicle exit points.	Whole Site	During construction	N/A – No construction work has commenced.
S6.8.1	-	Every vehicle will be washed to remove any dusty materials from its chassis and wheels immediately before leaving the worksite.	Whole Site	During construction	N/A – No construction work has commenced.
S6.8.1	-	Road sections between vehicle-wash areas and vehicular entrances will be paved.	Whole Site	During construction	N/A – No construction work has commenced.
S6.8.1	-	The load carried by the trucks will be covered entirely to ensure no dust emission from the vehicles.	Whole Site	During construction	N/A – No construction work has commenced.
S6.8.1	-	Hoarding of not less than 2.4m high from ground level will be provided along the Project Site boundary adjoining a road where the new buildings (Old Bailey Wing and Arbuthnot Wing) will be constructed.	Whole Site	During construction	√
S6.8.1	-	Stockpiles of more than 20 bags of cement, dry pulverised fuel ash and dusty construction materials will be covered entirely by impervious sheeting sheltered on top and 3-sides.	Whole Site	During construction	N/A – No construction work has commenced.
S6.8.1	-	An effective dust screen will be provided to enclose scaffolding, if required, from the ground floor level of building for construction of superstructure of the new buildings.	Whole Site	During construction	√

EIA Ref.	EM&A Ref.	Recommended Mitigation Measures	Location	When to Implement the Measure	Status
S6.8.1	-	Impervious dust screen or sheeting will be implemented for demolition of structures and renovation of outer surfaces of structures that abuts or fronts open area accessible to the public to no less than 1m higher than the highest level of the structure being demolished.	Whole Site	During construction	√
S6.8.1	-	The area at which demolition work takes place will be sprayed with water or dust suppression chemical immediately prior to, during and immediately after the demolition activity.	Area for Demolition Work	During construction	N/A – No construction work has commenced.
S6.8.1	-	ULSD will be used for all construction plant on-site.	Whole Site	During construction	N/A – No construction work has commenced.
S6.8.1	-	The engine of the construction equipment or trucks during idling will be switched off.	Whole Site	During construction	N/A – No construction work has commenced.
S6.8.1	-	Site practices such as regular maintenance and checking of construction equipment deployed on-site will be conducted to avoid any black smoke emissions and to minimise gaseous emissions.	Whole Site	During construction	N/A – No construction work has commenced.
S6.10	S3.2	Monthly environmental site audits to ensure that appropriate dust control measures are properly implemented and good construction site practices are adopted throughout the construction period.	Whole Site	During construction	√
<i>Water Quality</i>					
S7.6	-	Channels, earth bunds or sand bag barriers will be provided on site to direct stormwater to silt removal facilities. The design of silt removal facilities will make reference to the guidelines in <i>Appendix A1 of ProPECC PN 1/94</i> . All drainage facilities and erosion and sediment control structures will be inspected on a regular basis and maintained to confirm proper and efficient operation at all times and particularly during rainstorms. Deposited silt and grit will be removed regularly.	Whole Site	During construction	<>
S7.6	-	All drainage facilities and erosion and sediment control structures will be regularly inspected and maintained to ensure proper and efficient operation at all times and particularly following rainstorms. Deposited silt and grit will be removed regularly and disposed of.	Whole Site	During construction	N/A – No construction work has commenced.



EIA Ref.	EM&A Ref.	Recommended Mitigation Measures	Location	When to Implement the Measure	Status
S7.6	-	Measures will be taken to reduce the ingress of stormwater into excavation areas. If the excavation of the concrete foundation is to be carried out in wet season, they will be dug and backfilled in short sections wherever practicable. Water pumped out from trenches or foundation excavations will be discharged into stormwater drains via silt removal facilities.	Whole Site	During construction	N/A – No construction work has commenced.
S7.6	-	Open stockpiles of excavated and demolition materials will be covered with tarpaulin or similar fabric during rainstorms. Measures will be taken to prevent the washing away of residues, chemicals or debris into any drainage system.	Whole Site	During construction	N/A – No construction work has commenced.
S7.6	-	Manholes (including newly constructed ones) will always be adequately covered and temporarily sealed so as to prevent silt, construction materials or debris being washed into the drainage system.	Whole Site	During construction	N/A – No construction work has commenced.
S7.6	-	Precautions will be taken when a rainstorm is imminent or forecasted, and actions to be taken during or after rainstorms are summarised in Appendix A2 of <i>ProPECC PN 1/94</i> . Particular attention will be paid to the control of silty surface runoff during storm events.	Whole Site	During construction	N/A – No construction work has commenced.
S7.6	-	All temporary and permanent drainage pipes and culverts provided to facilitate runoff discharge will be adequately designed for the controlled release of stormwater flows. All sediment traps will be regularly cleaned and maintained. The temporary diverted drainage will be reinstated to the original condition when the construction work has finished or the temporary diversion is no longer required.	Whole Site	During construction	N/A – No construction work has commenced.
S7.6	-	Vehicle and plant servicing areas, vehicle washing bays and lubrication bays will, as far as possible, be located within roofed areas. The drainage in these covered areas will be connected to foul sewers via a petrol interceptor.	Whole Site	During construction	N/A – No construction work has commenced.
S7.6	-	Oil leakage or spillage will be contained and cleaned up immediately. Waste oil will be collected and stored for recycling or disposal.	Whole Site	During construction	N/A – No construction work has commenced.
S7.6	-	Waste streams classifiable as chemical wastes will be properly stored, collected and treated.	Whole Site	During construction	<>
S7.6	-	All fuel tanks and chemical storage areas will be provided with locks and be sited on paved areas.	Whole Site	During construction	N/A – No construction work has commenced.

EIA Ref.	EM&A Ref.	Recommended Mitigation Measures	Location	When to Implement the Measure	Status
S7.6	-	The storage areas will be surrounded by bunds with a capacity equal to 110% of the storage capacity of the largest tank to prevent spilled oil, fuel and chemicals from reaching the receiving waters.	Whole Site	During construction	N/A – No construction work has commenced.
S7.6	-	The Contractors will prepare guidelines and procedures for immediate clean-up actions following any spillages of oil, fuel or chemicals.	Whole Site	During construction	√
S7.6	-	Surface runoff from bunded areas will pass through oil/grease traps prior to discharge to the stormwater system	Whole Site	During construction	N/A – No construction work has commenced.
S7.6	-	The stormwater discharge from the site will be monitored as part of the routine monitoring under the WPCO licence, if applicable.	Whole Site	During construction	N/A – No construction work has commenced.
S7.6	-	The existing toilet facilities of the CPS will be available to the construction workforce. The sewage will be discharged to the public sewer.	Whole Site	During construction	√
S7.8	S5.2	Monthly site audits of the works areas will be carried out during the construction phase to monitor the environmental performance of the Project and to enable prompt actions to rectify any malpractice which may give rise to water pollution problem.	Whole Site	During construction	√
<i>Waste Management</i>					
S8.5	S6.3.1 & Table 6.1	<u>General</u> The Contractor shall apply for and obtain all the necessary waste disposal permits or licences are obtained prior to the commencement of the construction works.	Whole Site	During construction	√
S8.5	-	<u>Management of Waste Disposal</u> The construction contractor will open a billing account with the EPD. Every construction waste or public fill load to be transferred to the Government waste disposal facilities such as public fill reception facilities, sorting facilities, landfills will require a valid "chit" which contains the information of the account holder to facilitate waste transaction recording and billing to the waste producer.	Whole Site	During construction	√

EIA Ref.	EM&A Ref.	Recommended Mitigation Measures	Location	When to Implement the Measure	Status
S8.5	S6.2	A trip-ticket system will also be established to monitor the disposal of construction waste at landfill and to control fly-tipping. The trip-ticket system will be included as one of the contractual requirements and implemented by the contractor.	Whole Site	During construction	√
S8.5	S6 & Table 6.1	A recording system for the amount of wastes generated/recycled and disposed of will be established during the construction phase.	Whole Site	During construction	√
S8.5	S6.3	<u>Reduction of Construction Waste Generation</u> C&D material will be segregated on-site into public fill and construction waste and stored in different containers or skips to facilitate reuse of the public fill and proper disposal of the construction waste. Specific areas of the work site will be designated for such segregation and storage if immediate use is not practicable.	Whole Site	During construction	√
S8.5	S6	<u>Chemical Waste</u> The contractor will register as a chemical waste producer with the EPD.	Whole Site	During construction and operation	√
S8.5	S6	Containers used for storage of chemical waste shall: <ul style="list-style-type: none"> <li>• Be suitable for the substance they are holding, resistant to corrosion, maintained in a good condition, and securely closed;</li> <li>• Have a capacity of less than 450 L unless the specifications have been approved by the EPD; and</li> <li>• Display a label in English and Chinese in accordance with instructions prescribed in <i>Schedule 2 of the Regulations</i>.</li> </ul>	Whole Site	During construction and operation	N/A – No construction work has commenced.
S8.5	S6	Storage areas for chemical waste shall: <ul style="list-style-type: none"> <li>• Be clearly labelled and used solely for the storage of chemical waste;</li> <li>• Be enclosed on at least 3 sides;</li> <li>• Have an impermeable floor and bunding, of capacity to accommodate 110% of the volume of the largest container or 20% by volume of the chemical waste stored in that area, whichever is the greatest;</li> <li>• Have adequate ventilation;</li> <li>• Be covered to prevent rainfall entering (water collected within the</li> </ul>	Whole Site	During construction and operation	N/A – No construction work has commenced.

EIA Ref.	EM&A Ref.	Recommended Mitigation Measures	Location	When to Implement the Measure	Status
		<p>bund must be tested and disposed of as chemical waste, if necessary); and</p> <ul style="list-style-type: none"> <li>• Be arranged so that incompatible materials are appropriately separated.</li> </ul>			
S8.5	S6	A licensed contractor shall be employed to collect chemical waste for delivery to a licensed treatment facility.	Chemical Waste Treatment Centre at Tsing Yi	During construction and operation	N/A – No construction work has commenced.
S8.5	S6 & Table 6.1	<p><u>General Refuse</u></p> <p>General refuse will be stored in enclosed bins separately from construction and chemical wastes. The general refuse will be delivered to the transfer station, separately from construction and chemical wastes, on a daily basis to reduce odour, pest and litter impacts.</p>	Whole site	During construction	√
S8.5	S6	Recycling bins will be provided at strategic locations to facilitate recovery of aluminium can and waste paper from the Site. Materials recovered will be sold for recycling.	Whole site	During construction and operation	√
S8.5	S6	<p><u>Staff Training</u></p> <p>At the commencement of the construction works, training will be provided to workers on the concepts of site cleanliness and on appropriate waste management procedures, including waste reduction, reuse and recycling.</p>	Whole site	Commence-ment of construction	√
S8.7	S6.1 & 6.3	Monthly audits of the waste management practices will be carried out during the construction phases to determine if wastes are being managed in accordance with the recommended good site practices. The audits will examine all aspects of waste management including waste generation, storage, recycling, transport and disposal.	Whole site	During construction	√

## Remark:

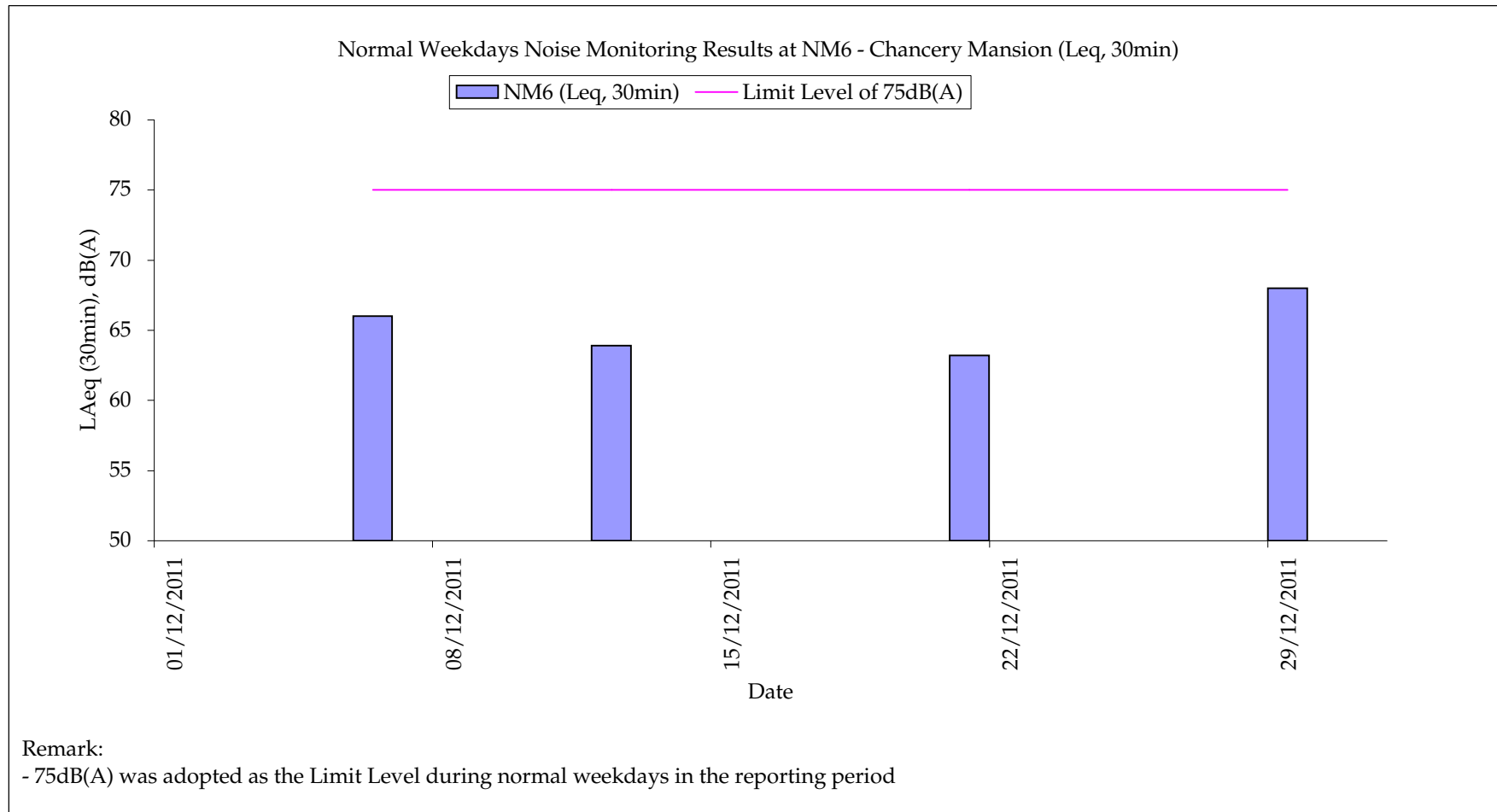
- √ Compliance of Mitigation Measures
- <> Compliance of Mitigation but need improvement
- x Non-compliance of Mitigation Measures
- ▲ Non-compliance of Mitigation Measures but rectified by Gammon Construction Ltd
- Δ Deficiency of Mitigation Measures but rectified by Gammon Construction Ltd
- N/A Not Applicable in Reporting Period

Annex H

## Noise Monitoring Results

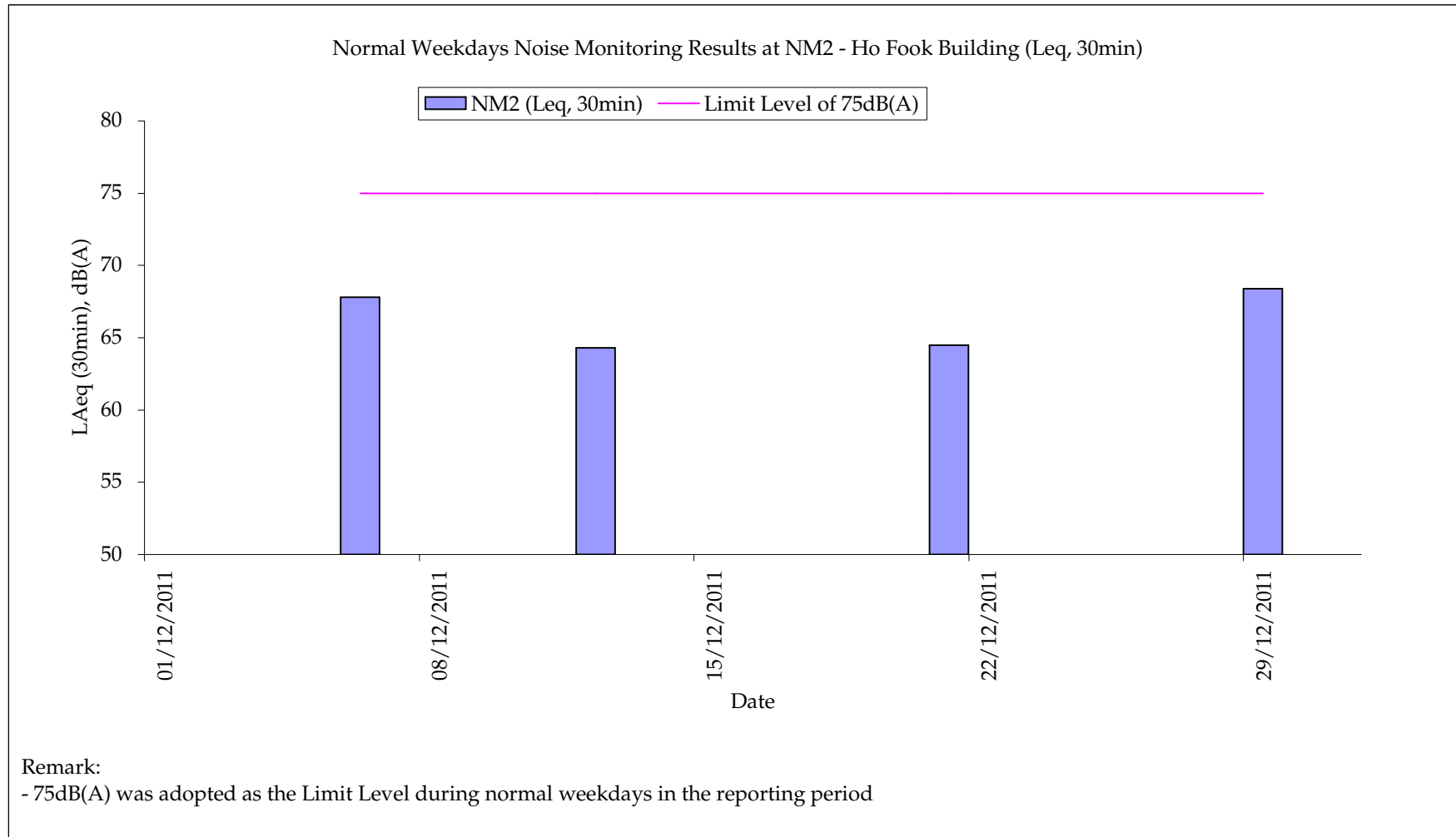


## Annex H



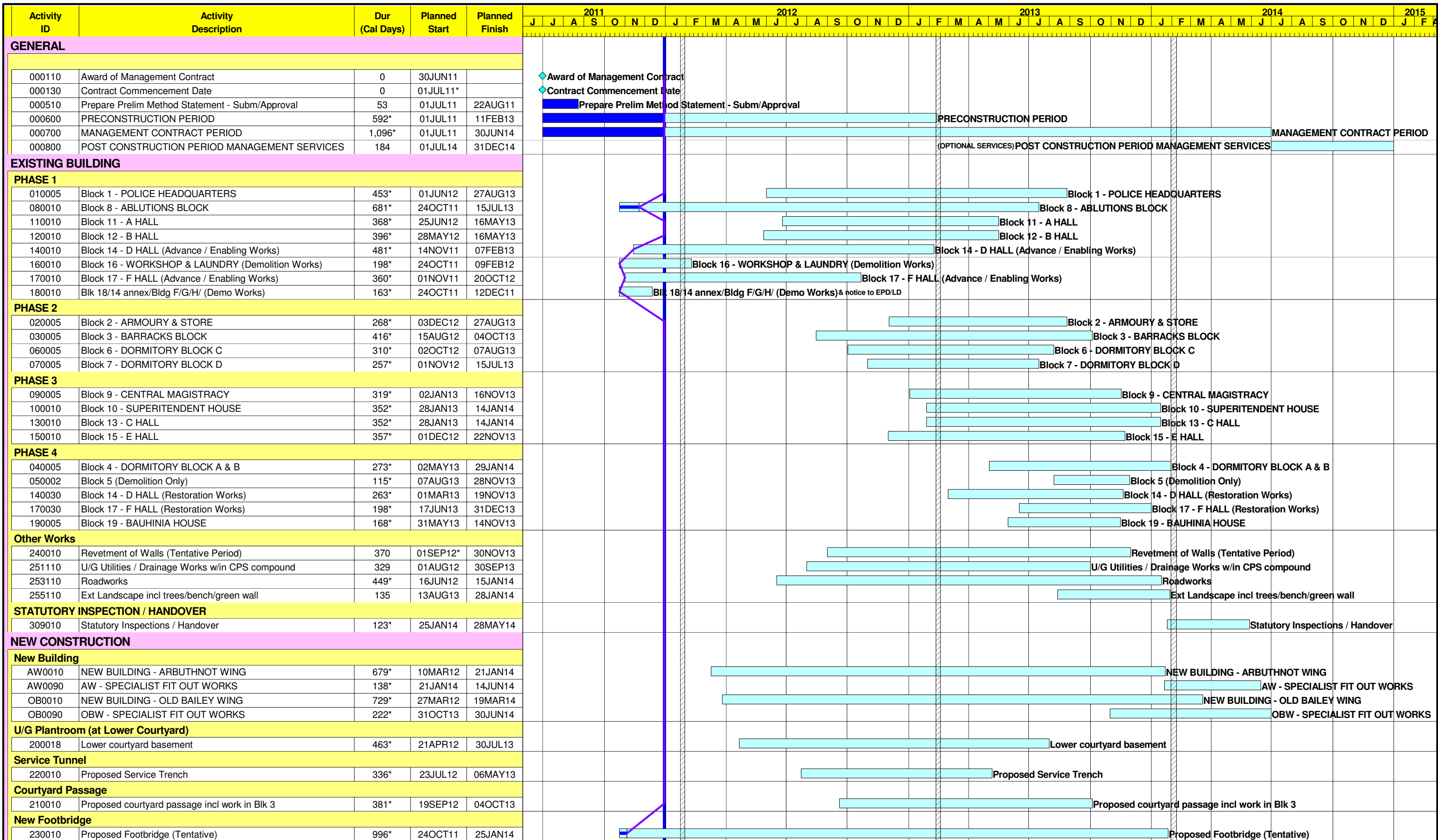


## Annex H

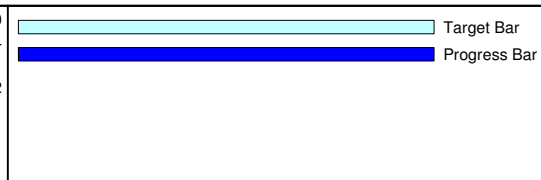


Annex I

# Construction Programme for the Project



Start Date 07JUL10  
 Finish Date 31DEC14  
 Data Date 31DEC11  
 Run Date 03JAN12 13:22



1M01

**CENTRAL POLICE STATION  
 CONSERVATION AND REVITALIZATION  
 (MANAGEMENT CONTRACT)  
 MARKED-UP CONSTRUCTION PROGRAMME**

Sheet 1 of 1



GCL / P / J3416 / SUM/CP01 (rev 2)				
Date	Revision	Checked	Approved	
05SEP11	EPD submission			
31DEC11	Monthly Update			

Annex J

## Tree Inspection Reports



欣榮 (香港) 環境管理有限公司

Yan Wing (Hong Kong) Environment Management Limited

香港 新界 元朗 新田 米埔村 青山道 14A 號 DD 105

No. 14A, DD105, Castle Peak Road, Mai Po Tsuen, San Tin, Yuen Long, N.T., Hong Kong

通信地址 (Mail Address) : 上水郵局信箱 八八九 號 (Sheung Shui Post Office Box 889)

Tel : 9776 1987 / 2486 2317 Fax : 2482 4667 E-mail : yanwinghk@hotmail.com

RECEIVED

- 3 JAN 2012

4 Ariel

2<sup>nd</sup> January 2012

Our Ref. : YW/TP/GAMMON/2011/12/1

Gammon Construction Limited  
28/F Devon House  
TaiKoo Place 979 King's Road  
Hong Kong  
Attn : Mr. Cliff C.H. LEUNG

Tel. 2516 8823  
Fax.2516 6260

Dear Sir,

**Summary of Monthly Inspection Report for the Six Existing Trees  
at Central Police Station Compound for December. 2011  
( Contract Ref. : J3416/400.4/D00025 )**

Tree No.	Botanical Name	Date of Inspection	Overall HealthCondition Good/Fair/Poor	Remarks
Tree-5	<i>Mangifera indica</i> 芒果	19 <sup>th</sup> Dec. 2011	Good	N.F.A.
Tree-6	<i>Aleurites moluccana</i> 石栗	19 <sup>th</sup> Dec. 2011	Fair	N.F.A.
Tree-7	<i>Aleurites moluccana</i> 石栗	19 <sup>th</sup> Dec. 2011	Fair	To remove rubbish from the planter.
Tree-8	<i>Plumeria rubra</i> 紅雞蛋花	19 <sup>th</sup> Dec. 2011	Fair	N.F.A.
Tree-9	<i>Araucaria cunninghamia</i> 花旗杉	19 <sup>th</sup> Dec. 2011	Fair	To cut off the barbed wire from the tree.
Tree-11	<i>Dracaena marginata</i> 馬尾鐵	19 <sup>th</sup> Dec. 2011	Fair	1. The door of the building should be always locked. 2. Removal of the temperate fence is recommended.





欣榮 (香港) 環境管理有限公司

**Yan Wing (Hong Kong) Environment Management Limited**

香港 新界 元朗 新田 米埔村 青山道 14A 號 DD 105

No. 14A, DD105, Castle Peak Road, Mai Po Tsuen, San Tin, Yuen Long, N.T., Hong Kong

通信地址 (Mail Address) : 上水郵局信箱 八八九 號 (Sheung Shui Post Office Box 889)

Tel : 9776 1987 / 2486 2317 Fax : 2482 4667 E-mail : yanwinghk@hotmail.com

---

Findings during the inspection :

- i). The 2.5m height net-wired fence with a padlocked door have been erected as a protection zone for the 6 existing trees.
- ii). Doors of the protection zones have been properly locked and restrict admittance to the zone.
- iii). Appropriate notices/warning signs/banner are being displayed in front of the protection zones.

Tree Inspection Reports are attached for your reference and record, please.

I should be much grateful if you could endorse the attached three Invoices (Nos.1005, 1007 and 1010) and fax them to my Office at 2486 2317. Thank you.

Yours faithfully

For and on behalf of  
Yan Wing (HK) Environment Management Ltd.

  
( WONG Pak Hay )  
Horticulture Manager



**Inspection Report for the 6 Existing Trees  
at Central Police Station Compound  
( Contract Ref. : J3416/400.4/D00025 )**

I. TREE NUMBER : Tree-5 *Mangifera indica* 芒果

II. BASIC INFORMATION :

Height (m)	16m	Crown spread (m)	18m
DBH (mm)	1000mm	Overall Health Condition Good/Fair/Poor	Good
Date of Inspection	19 <sup>th</sup> December 2011	Last Inspection Date	24 <sup>th</sup> November 2011

III. COMMENTS :

1. Overall health condition of the tree is good.
2. The planter is clean and tidy at the time of inspection.
3. A net-wired fence in 2.5m H with a padlocked door has been erected to create a protection zone for the tree.
4. The door of the protection zone has been locked and restricts admittance to the zone.
5. Appropriate notice/banner/warning signs being displayed in front of the protection zone.

IV. RECOMMENDATIONS :

1. No further action is required.

V. PHOTO RECORD :



Fig 2. A net-wired fence in 2.5m H with a padlocked door has been erected to create a protection zone for the tree.



Fig. 3 The planter is clean and tidy.





Fig. 4 The door has been locked and restricts admittance to the zone.



Fig. 5 Warning sign displays in front of the protection zone.



Fig. 6 Appropriate notice displays in front of the protection zone.



Fig. 7 A large banner being hang on the fence of the protection zone.



Signature of Inspection Officer :  
(Mr. HO Kun-chung, ISA CA -HK0452A)

Signature of Endorsement Officer :  
(Mr. WONG Pak-hay, Contract Manager)

Name of Contractor :

Yan Wing (HK) Environment  
Management Ltd.

Dated this :

30<sup>th</sup> December 2011



**Inspection Report for the 6 Existing Trees  
at Central Police Station Compound  
( Contract Ref. : J3416/400.4/D00025 )**

I. TREE NUMBER : Tree-6 *Aleurites moluccana* 石栗

II. BASIC INFORMATION :

Height (m)	10m	Crown spread (m)	10m
DBH (mm)	510mm	Overall Health Condition Good/Fair/Poor	Fair
Date of Inspection	19 <sup>th</sup> December 2011	Last Inspection Date	24 <sup>th</sup> November 2011

III. COMMENTS :

1. Overall health condition of the tree is fair at the time of inspection.
2. A net-wired fence in 2.5m H with a padlocked door has been erected to create a protection zone for the tree.
3. Appropriate notice displays in front of the protection zone.
4. The door of the protection zone has been locked to restrict admittance to the zone.
5. The planter is clean and tidy at the time of inspection.

IV. RECOMMENDATIONS :

1. No further action is required.

V. PHOTO RECORD :



Fig 2. Overall view of the tree. A net-wired fence in 2.5m H with a padlocked door has been erected to create a protection zone for the tree.



Fig. 3 The planter is clean and tidy at the time of inspection.



Fig. 4 Appropriate notice displays in front of the protection zone



Fig. 5 The door has been properly locked to restrict admittance to the zone.



Signature of Inspection Officer :  
(Mr. HO Kun-chung, ISA CA –HK0452A)

Signature of Endorsement Officer :  
(Mr. WONG Pak-hay, Contract Manager)

Name of Contractor :

Yan Wing (HK) Environment  
Management Ltd.

Dated this :

30<sup>th</sup> December 2011



**Inspection Report for the 6 Existing Trees  
at Central Police Station Compound  
( Contract Ref. : J3416/400.4/D00025 )**

I. TREE NUMBER : Tree-7 *Aleurites moluccana* 石栗

II. BASIC INFORMATION :

Height (m)	13m	Crown spread (m)	12m
DBH (mm)	650mm	Overall Health Condition Good/Fair/Poor	Fair
Date of Inspection	19 <sup>th</sup> December 2011	Last Inspection Date	24 <sup>th</sup> November 2011

III. COMMENTS :

1. Overall health condition of the tree is fair at the time of inspection.
2. A few rubbish has been found at the planter.
3. A net-wired fence in 2.5m H with a padlocked door has been erected to create a protection zone for the tree.
4. Appropriate notices/warning signs being displayed at the site.

IV. RECOMMENDATIONS :

1. To remove the rubbish from the planter.

V. PHOTO RECORD :



Fig 2. A few rubbish has been found at the planter.



Fig. 3 Overall view of the tree. A net-wired fence in 2.5mH with a padlocked door has been erected to create a protection zone for the tree.



Fig. 4 Appropriate notice displays in front of the protection zone.



Fig. 5 Notice/warning sign being displayed in front of the planter.





Fig. 6 Appropriate warning sign displays in front of the planter.



Fig.7 Appropriate notice displays in front of the planter.



Signature of Inspection Officer :  
(Mr. HO Kun-chung, ISA CA –HK0452A)

Signature of Endorsement Officer :  
(Mr. WONG Pak-hay, Contract Manager)

Name of Contractor :

Dated this :

Yan Wing (HK) Environment  
Management Ltd.

30<sup>th</sup> December 2011



**Inspection Report for the 6 Existing Trees  
at Central Police Station Compound  
( Contract Ref. : J3416/400.4/D00025 )**

I. TREE NUMBER : Tree-8 *Plumeria rubra* 紅雞蛋花

II. BASIC INFORMATION :

Height (m)	7m	Crown spread (m)	9m
DBH (mm)	430mm	Overall Health Condition Good/Fair/Poor	Fair
Date of Inspection	19 <sup>th</sup> December 2011	Last Inspection Date	24 <sup>th</sup> November 2011

III. COMMENTS :

1. Overall health condition of the tree is fair.
2. The planter is clean and tidy at the time of inspection.
3. Some litter bins are properly placed outside the protection zone.
4. Appropriate notice displays in front of the protection zone.

IV. RECOMMENDATIONS :

1. No further action is required.

2. PHOTO RECORD :

Fig 1. Tree number



Fig 2. The planter is clean and tidy at the time of inspection.



Fig. 3 Overall view of the tree. A net-wired fence in 2.5m H with a padlocked door has been erected to create a protection zone for the tree.



Fig. 4 Some litter bins are properly placed outside the protection zone.



Fig. 5 Appropriate notice displays in front of the protection zone.



Signature of Inspection Officer :  
(Mr. HO Kun-chung, ISA CA –HK0452A)

Signature of Endorsement Officer :  
(Mr. WONG Pak-hay, Contract Manager)

Yan Wing (HK) Environment  
Management Ltd.

Name of Contractor :

Dated this :

30<sup>th</sup> December 2011



**Inspection Report for the 6 Existing Trees  
at Central Police Station Compound  
( Contract Ref. : J3416/400.4/D00025 )**

I. TREE NUMBER : Tree - 9 *Araucaria cunninghamia* 花旗杉

II. BASIC INFORMATION :

Height (m)	13m	Crown spread (m)	5m
DBH (mm)	230mm	Overall Health Condition Good/Fair/Poor	Fair
Date of Inspection	19 <sup>th</sup> December 2011	Last Inspection Date	24 <sup>th</sup> November 2011

III. COMMENTS :

1. Overall health condition of the tree is fair.
2. The planter is clean and tidy at the time of inspection.
3. A barbed wire (about 30cm L) has been found on the mid trunk.
4. A net-wired fence in 2.5m H with a padlocked door has been erected to create a protection zone for the tree.
5. The door has been properly locked and restricts admittance to the protection zone.
6. Appropriate notice displays in front of the protection zone.

IV. RECOMMENDATIONS :

1. To cut off the outer part of the barked wire (about 30 cm in length) from the tree.

V. PHOTO RECORD :

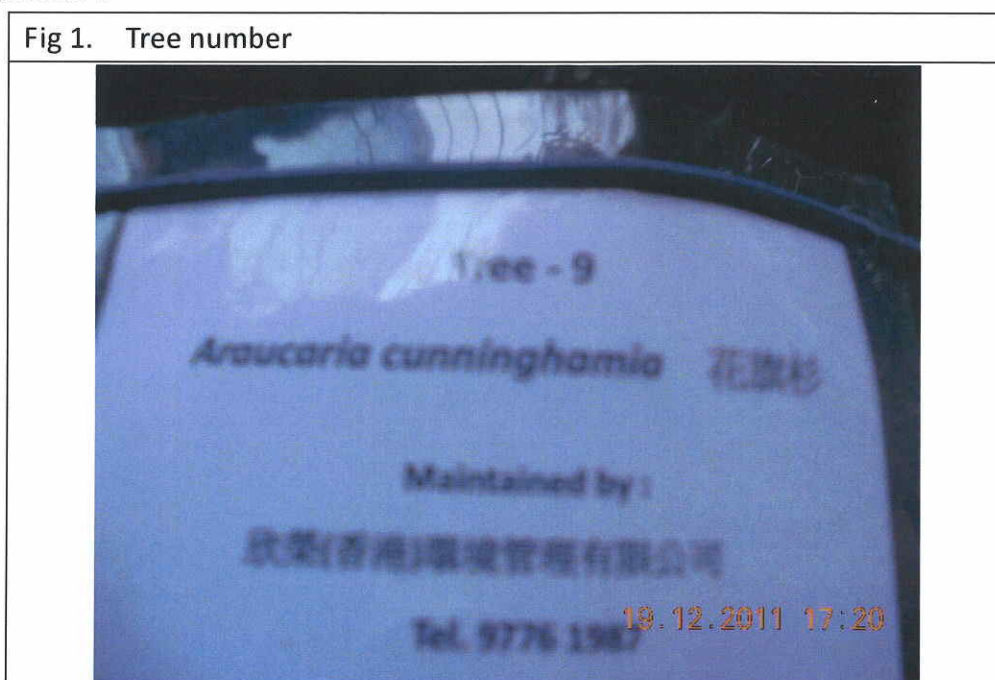


Fig 2. The planter is clean and tidy. A barbed wire (about 30cm L) has been found on the mid trunk.



Fig. 3 Overall view of the tree. A net-wired fence in 2.5m H with a padlocked door has been erected to create a protection zone for the tree.



Fig. 4 The door has been properly locked and restricts admittance to the protection zone.



Fig. 5 Appropriate notice displays in front of the protection zone.



Signature of Inspection Officer :  
(Mr. HO Kun-chung, ISA CA –HK0452A)

Signature of Endorsement Officer :  
(Mr. WONG Pak-hay, Contract Manager)

Name of Contractor :

Yan Wing (HK) Environment  
Management Ltd.



Dated this :

30<sup>th</sup> December 2011

**Inspection Report for the 6 Existing Trees  
at Central Police Station Compound  
( Contract Ref. : J3416/400.4/D00025 )**

I. TREE NUMBER : Tree -11 *Dracaena marginata* 馬尾鐵

II. BASIC INFORMATION :

Height (m)	8m	Crown spread (m)	2m
DBH (mm)	170mm	Overall Health Condition Good/Fair/Poor	Fair
Date of Inspection	19 <sup>th</sup> December 2011	Last Inspection Date	24 <sup>th</sup> November 2011

III. COMMENTS :

1. Overall health condition of the tree is fair at the time of inspection.
2. The planter is clean and tidy. Some vines are found on the planter. These vines would not affect the growth of the tree. Removal is not required.
3. A net-wired fence in 2.5mH with a padlocked door has been erected to create a protection zone for the tree.
4. Appropriate notice displays in front of the planter.
5. The door of the protection zone has been properly locked, but the main door of the building remains open.

IV. RECOMMENDATIONS :

1. The door of the building should be always locked so as to restrict the admittance to the protection zone.
2. Removal of the temperate fence is recommended.

V. PHOTO RECORD :





Fig 2. The planter is clean and tidy, some vines are found on the planter. These climbing plants would not affect the growth of the tree, removal is not required.



Fig 3 A net-wired fence in 2.5mH with a padlocked door has been erected to create a protection zone for the tree.



Fig. 4 Appropriate notice displays in front of the planter.



Fig. 5 The door has been properly locked prior to inspection.



Fig. 6 The door of the building should be always locked so as to restrict admittance to the protection zone. Removal of the temperate fence is recommended.



Signature of Inspection Officer :  
(Mr. HO Kun-chung, ISA CA –HK0452A)

Signature of Endorsement Officer :  
(Mr. WONG Pak-hay, Contract Manager)

Name of Contractor :

Yan Wing (HK) Environment  
Management Ltd.

Dated this :

30<sup>th</sup> December 2011



**FORM 1: TREE GROUP INSPECTION FORM**

**表格 1: 樹群檢查表格**

**General Information 基本資料**

Company 公司:	<b>Gammon Construction Ltd</b>	Name of Tree Inspection officer 巡查人員姓名:	<b>HO Kun Chung</b>
File Ref. 檔案編號:	<b>YW/TP/GAMMON/2011/12/2</b>	Name of Endorsement Officer 覆核人員姓名:	<b>WONG Pak Hay</b>
Date of Inspection 巡查日期:	<b>December 19, 2011</b>		
Project/Contract No. 合約/工程編號:	<b>J3416/400.4/D00025</b>		

**Location Information 位置資料**

Location 地點:	<b>Central Police Station Compound</b>	Nearby Utility Post No. 就近公用設施編號:	
Location Types 地點類別: Address: __ (multiple answers allowed) 可選多於一項	<input type="checkbox"/> Roadside 路旁 <input checked="" type="checkbox"/> Open space 空地 <input type="checkbox"/> Exhibition Centre 展覽中心 <input type="checkbox"/> View Point 觀景台 <input type="checkbox"/> Walking / nature trail 行山徑 / 自然徑 <input type="checkbox"/> Others (please specify) 其他 (請說明): _____		
	<input type="checkbox"/> Community Hall / Centre 社區會堂 / 中心 <input type="checkbox"/> Roadside Planter 路旁花園 <input type="checkbox"/> Rain shelter / pavilion 避雨亭 / 涼亭 <input type="checkbox"/> Sitting out area 休憩處		

**General Tree Information 基本樹木資料**

\* Delete as appropriate 請把不合適的刪除

Main tree species in the group or minority tree species of significant size 在群組內的主要樹種或樹幹胸徑或高度或樹冠範圍較大的樹種 (Note 2)	Approx. number of trees in the relevant species or as a % of tree group 該樹種在群組內的百分比/數目*	Range of tree height (m) 該樹種高度範圍	Overall health condition 整體健康狀況 (good, fair, poor 好, 良, 差)	Overall structural condition 整體結構狀況 (good, fair, poor 好, 良, 差)	Other remarks (Any special tree condition, e.g. dying/dead, pest/disease problem and structural defects; and soil condition 其他評語 (樹木狀況例如: 凋謝/枯樹/病蟲害或結構問題; 及泥土狀況)
<i>Mangifera indica</i> 芒果	17%, 1 No.	16M	GOOD	GOOD	
<i>Aleurites moluccana</i> 石栗	32% 2 Nos.	10-13M	FAIR	FAIR	
<i>Plumeria rubra</i> 紅雞蛋花	17% 1 No.	7M	FAIR	FAIR	
<i>Araucaria cunninghamia</i> 花旗杉	17% 1 No.	13M	FAIR	FAIR	
<i>Dracaena marginata</i> 馬尾鐵	17% 1 No.	8M	FAIR	FAIR	

**Target 目標**

<b>TARGET</b> (people or property potentially affected by tree/branch failure) 目標 (因樹木倒塌或枝條斷裂而受影響的人或財產)
Does target exist? 目標是否存在? <input checked="" type="checkbox"/> Yes 是 <input type="checkbox"/> No 否
Can target be moved? 能否移除目標? <input type="checkbox"/> Yes 是 <input checked="" type="checkbox"/> No 否
Can the use of site be restricted? 可否限制場地的使用? <input checked="" type="checkbox"/> Yes 是 <input type="checkbox"/> No 否
Frequency of use of location 使用該地點的頻密程度: <input type="checkbox"/> Occasional use 偶爾使用 <input type="checkbox"/> Intermittent use 間歇使用 <input checked="" type="checkbox"/> Frequent use 經常使用 <input type="checkbox"/> Constant use 恆常使用

**Identification of Trees for Remedial Action or Detailed Tree Risk Assessment**

識別下述樹木, 以便採取風險緩減措施或進行詳細樹木風險評估

Trees falling under the following criteria 樹木屬於以下任何一項或多於一項類別	Number of trees 樹木數量	Remedial action or detailed tree risk assessment 緩減措施或進行詳細樹木風險評估
(1) Trees on complaint list with structural or health problems 投訴個案中, 結構或健康問題的樹木 (Note 1)	<b>NII</b>	
(2) Mature trees belonging to species with brittle wood structure and having unsatisfactory health or structural conditions with failure potential 屬木質脆弱品種並已達成熟期及有倒塌風險的樹木 (Note 1)	<b>NII</b>	
(3) Tree with major defects or health problems 有明顯缺陷或健康問題的樹木 (Note 1)	<b>NII</b>	
(4) Trees growing in very stressful site conditions with failure potential 生長於非常擠壓環境而有倒塌風險的樹木 (Note 1)	<b>NII</b>	

**Attached Information 附夾資料**

<input type="checkbox"/> Site plan 場地平面圖	<input checked="" type="checkbox"/> Photo record 相片紀錄	<input type="checkbox"/> Others 其他 (please specify 請說明): <b>Monthly Inspection Reports</b>
--	---	--

Signature of Endorsement Officer: \_\_\_\_\_

Signature of Tree Inspection Officer: \_\_\_\_\_

Name of Contractor

**Yan Wing (HK) Environment Management Ltd.**

Date:

**30-12-2011**



Note 1: If remedial action (such as pruning) undertaken cannot mitigate the potential risk of tree or branch failure, detailed tree risk assessment (using Form 2) should be carried out.  
 備註 1: 若風險緩減措施(如枝幹修剪)仍未能解決倒塌或枝條斷裂的潛在風險, 應為該樹進行詳細的樹木風險評估(表格 2)。  
 Note 2: Please read in conjunction with TMO's Guidelines on Tree Risk Assessment and Management Arrangement (Para. 4.3. refers)  
 備註 2: 請參閱樹木管理辦事處的樹木風險評估安排及管理指引(第 4.3 節)

Annex K

Environmental Complaint,  
Environmental Summon  
and Prosecution Log

*Annex K Cumulative Complaint and Summons/Prosecutions Log*

<b>Reporting Month</b>	<b>Number of Complaints in Reporting Month</b>	<b>Number of Summons/Prosecutions in Reporting Month</b>
November 2011	0	0
December 2011	0	0
Overall Total	0	0