

The Jockey Club CPS Limited

Central Police Station Conservation
and Revitalisation Project:
71st Monthly EM&A Report
(1 September to 30 September 2017)

Issue Date: October 2017

Environmental Resources Management

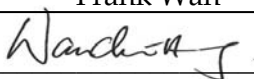
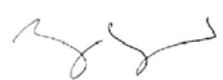
16/F Berkshire House
25 Westlands Road
Quarry Bay, Hong Kong
Telephone: (852) 2271 3000
Facsimile: (852) 2723 5660
E-mail: post.hk@erm.com
<http://www.erm.com>

The Jockey Club CPS Limited

Central Police Station Conservation
and Revitalisation Project:
71st Monthly EM&A Report
(From 1 September to 30 September
2017)

Issue Date: October 2017

Reference 0095646

| | |
|--|--|
| For and on behalf of ERM-Hong Kong, Limited | |
| Approved by: | Frank Wan |
| Signed: |  |
| Position: | Partner |
| Certified by: |  |
| | (Environmental Team Leader - Katie Yu) |
| Date: | 11 October 2017 |

This report has been prepared by ERM-Hong Kong, Limited with all reasonable skill, care and diligence within the terms of the Contract with the client, incorporating our General Terms and Conditions of Business and taking account of the resources devoted to it by agreement with the client.

We disclaim any responsibility to the client and others in respect of any matters outside the scope of the above.

This report is confidential to the client and we accept no responsibility of whatsoever nature to third parties to whom this report, or any part thereof, is made known. Any such party relies on the report at their own risk.

Your ref. 0095646_let_Atkins_20171012 Monthly EM&A Report No.71.doc
Our ref. 5121189/17.20/OC128/KC/EK
Date: 12 October 2017

info.hk@atkinsglobal.com
www.atkinsglobal.com

By Post and Email (katie.yu@erm.com)

ERM-Hong Kong Limited,
16/F Berkshire House,
25 Westlands Road,
Quarry Bay,
Hong Kong

Attn: Ms Katie Yu

Dear Katie,

**Central Police Station Conservation and Revitalization Project
Verification of Monthly EM&A Report No. 71**

We refer to your letter dated 12 October 2017 regarding the Monthly EM&A Report No. 71. Atkins China Limited verifies, in the capacity of Independent Environmental Checker, that the report conforms the requirements provided in Condition 3.4 of the Environmental Permit (EP-408/2011/C).

**Yours faithfully
for and on behalf of
Atkins China Limited**



**Keith Chau
Independent Environmental Checker**

c.c. HKJC – Mr. Kenneth Lee (By Email)
Rocco Design Architect – Mr. Charles Kung (By Email)

CONTENTS

| | | |
|-------|--|----|
| 1 | INTRODUCTION | 1 |
| 1.1 | PURPOSE OF THE REPORT | 1 |
| 1.2 | STRUCTURE OF THE REPORT | 1 |
| 2 | PROJECT INFORMATION | 3 |
| 2.1 | BACKGROUND | 3 |
| 2.2 | SITE DESCRIPTION | 3 |
| 2.3 | CONSTRUCTION ACTIVITIES | 3 |
| 2.4 | PROJECT ORGANISATION | 4 |
| 2.5 | STATUS OF ENVIRONMENTAL APPROVAL DOCUMENTS | 4 |
| 3 | ENVIRONMENTAL MONITORING REQUIREMENTS | 6 |
| 3.1 | NOISE MONITORING | 6 |
| 3.1.1 | Monitoring Location | 6 |
| 3.1.2 | Monitoring Parameters, Frequency and Programme | 6 |
| 3.1.3 | Monitoring Equipment and Methodology | 6 |
| 3.1.4 | Event / Action Plan | 7 |
| 3.1.5 | Mitigation Measures | 7 |
| 3.2 | CULTURAL HERITAGE | 8 |
| 3.2.1 | Vibration Monitoring | 8 |
| 3.2.2 | Mitigation Measures | 9 |
| 3.3 | LANDSCAPE AND VISUAL MONITORING | 9 |
| 3.3.1 | Mitigation Measures | 9 |
| 3.4 | ENVIRONMENTAL REQUIREMENTS IN CONTRACT DOCUMENTS | 9 |
| 4 | IMPLEMENTATION STATUS ON ENVIRONMENTAL PROTECTION REQUIREMENTS | 10 |
| 5 | MONITORING RESULTS | 11 |
| 5.1 | NOISE | 11 |
| 5.2 | CULTURAL HERITAGE | 11 |
| 5.2.1 | Vibration Monitoring | 11 |
| 5.2.2 | Heritage Site Audit | 11 |
| 5.3 | LANDSCAPE AND VISUAL | 12 |
| 5.4 | WASTE MANAGEMENT | 13 |
| 6 | ENVIRONMENTAL SITE INSPECTION | 15 |
| 7 | ENVIRONMENTAL NON-CONFORMANCE | 16 |
| 7.1 | SUMMARY OF MONITORING EXCEEDANCE | 16 |
| 7.2 | SUMMARY OF ENQUIRY | 16 |
| 7.3 | SUMMARY OF ENVIRONMENTAL NON-COMPLIANCE | 16 |
| 7.4 | SUMMARY OF ENVIRONMENTAL COMPLAINT | 16 |

| | | |
|-----|--|----|
| 7.5 | <i>SUMMARY OF ENVIRONMENTAL SUMMONS AND SUCCESSFUL PROSECUTION</i> | 16 |
| 8 | <i>FUTURE KEY ISSUES</i> | 17 |
| 8.1 | <i>KEY ISSUES FOR THE COMING MONTH</i> | 17 |
| 8.2 | <i>MONITORING SCHEDULE FOR THE NEXT MONTH</i> | 17 |
| 8.3 | <i>CONSTRUCTION PROGRAMME FOR THE NEXT MONTH</i> | 17 |
| 9 | <i>CONCLUSIONS</i> | 18 |

LIST OF TABLES

| | |
|------------------|--|
| Table 2.1 | Summary of Construction Activities Undertaken from 1 to 30 September 2017 |
| Table 2.2 | Summary of Environmental Licensing, Notification and Permit Status |
| Table 3.1 | Construction Phase Noise Monitoring Station |
| Table 3.2 | Noise Monitoring Equipment |
| Table 3.3 | Action and Limit Levels for Construction Noise Monitoring |
| Table 3.4 | Alert, Alarm and Action (AAA) Levels for Vibration Monitoring |
| Table 3.5 | Event and Action Plan for Vibration Monitoring |
| Table 4.1 | Status of Required Submissions |
| Table 5.1 | Findings of Monthly Tree Inspection in the Reporting Period |
| Table 5.2 | Quantities of Waste Generated from the Project |
| Table 8.1 | Construction Works to be Undertaken in the Coming Month |

LIST OF ANNEXES

| | |
|-----------------|--|
| Annex A | Locations of Works Areas and the Surroundings |
| <i>Annex A1</i> | <i>Project Location</i> |
| <i>Annex A2</i> | <i>Declared Monuments within the Project Site</i> |
| <i>Annex A3</i> | <i>Site Layout Plan marked with Works</i> |
| Annex B | Project Organization Chart and Contact Detail |
| Annex C | Locations of Noise Monitoring Stations and Noise Sensitive Receivers |
| Annex D | Monitoring Schedule of the Reporting Month and the Next Month |
| Annex E | Calibration Reports for Calibrators and Sound Level Meters |
| Annex F | Event/Action Plans for Noise |
| Annex G | Summary of Implementation Status |
| Annex H | Noise Monitoring Results |
| Annex I | Construction Programme for the Project |
| Annex J | Tree Inspection Reports |
| Annex K | Environmental Complaint/ Enquiry, Environmental Summons and Prosecution Log |

Annex L Records of Vibration Monitoring for Other Construction Works

EXECUTIVE SUMMARY

The construction works of **Central Police Station Conservation and Revitalisation Project** commenced on 24 October 2011. This is the 71st monthly Environmental Monitoring and Audit (EM&A) report presenting the EM&A works carried out during the period from 1 to 30 September 2017 in accordance with the EM&A Manual.

Summary of Construction Works undertaken during Reporting Period

The major construction works undertaken during the reporting period include:

- Sitewide hard landscape construction;
- Timber elements repair and replacement at Blocks 1, 3, 9, 10 and 14;
- Fitting out works at Blocks 3, 8, 9, 10, 11, 12, 13, 14, 17 and Old Bailey Wing;
- Metal works repair at Blocks 1, 3, 8, 9, 10, 12 and 14;
- External façade repair at Blocks 3, 9, 10, 12, 13, 14 and 17;
- E&M fixing at Blocks 1, 3, 6, 7, 9, 12, 13, 14, 15, Arbuthnot Wing and Old Bailey Wing;
- Footbridge construction; and
- Enhancement works at Blocks 3 and 10.

Environmental Monitoring and Audit Progress

A summary of the monitoring activities in this reporting period is listed below:

- | | |
|---|----------|
| • Construction noise monitoring during normal weekdays at each monitoring station | 5 times |
| • Joint environmental site inspection | 1 time |
| • Heritage site inspections | 26 times |
| • Landscape & visual monitoring / tree inspection | 1 time |
| • Vibration monitoring for other construction works | 26 times |

Noise

5 sets of 30-minute construction noise measurements were carried out at each of the monitoring stations (NM2 and NM6) during normal weekdays of the reporting period. No exceedance of the Action or Limit Level of construction noise was recorded during the reporting period.

Cultural Heritage

No vibration monitoring was carried out for demolition works, trial piling or pile/bored piling works as the aforementioned works were not conducted during the reporting period.

Vibration monitoring carried out for other construction works during the reporting period are listed below:

- 26 vibration monitoring measurements for the structural addition and alteration works at Block 11.

No exceedance of the Alert, Alarm and Action Levels was recorded during the reporting period.

Heritage site audits were conducted on every working weekday in September 2017 by the Heritage Checker during the reporting period.

Major observations and recommendations during the site inspections were listed below:

7 September 2017

- It was observed that the waterproofing at roof of Blocks 11 and 13 was damaged. The Contractor was reminded to repair the waterproofing to protect the building.

28 September 2017

- Improvement of tidiness at Magistracy Terrace is required. The Contractor was reminded to follow up.

29 September 2017

- It was observed that the waterproofing material used for roof of Block 14 was of substandard quality. The Contractor was reminded to rectify the defective waterproofing to protect the building.
- A pond of stagnant water was observed on ground floor north terrace of Block 1, which may cause potential damage to floor tiles. The Contractor was reminded to remove the stagnant water.
- Saturation of wall at Block 9 was observed due to inadequate temporary rainwater pipe. The Contractor was reminded to complete the rainwater pipe installation or extend the temporary rainwater pipe to protect the adjacent wall.
- It was observed that the wall on second floor of Block 13 was saturated below the former canopy location, indicating water ingress from the canopy. The Contractor was reminded to repair the canopy to protect the building.

The Contractor was urged to follow-up the necessary rectification based on the inspection findings.

Landscape & Visual

Landscape and visual monitoring has commenced since October 2011 on a monthly basis. The tree inspection was conducted on 5 September 2017 by the arborist during the reporting period. Signs of pest (Mealy Bugs) have been observed on the leaves of Tree 5 and application of pesticides and pruning of decayed logs have been conducted on 26 September 2017. Signs of pest (*Trialeurodes vaporariorum*) have apparently reduced on the leaves of Tree 6 and Tree 7 following the pesticide operations conducted on 3 and 4 August 2017. The Contractor was reminded to keep close monitoring of the growth of Tree 6 and Tree 7. Construction debris observed at the planter of Tree 11 in the last inspection has been removed. The Contractor has provided a temporary shelter for the protection of Tree 11 during the nearby renovation works. Withered leaves were observed on Tree 11. The Contractor should closely monitor the growth of Tree 11.

Waste Management

Wastes generated from this Project include inert construction and demolition (C&D) materials and non-inert C&D materials. A total of 199.78 tonnes of inert C&D materials were generated during the reporting period. 62.43 tonnes of non-inert C&D materials comprising general refuse and mixed construction waste were generated during the reporting period. No metal, paper/cardboard packaging or plastic waste was recycled during the reporting period. No chemical waste was collected by licenced chemical waste collector during the reporting period.

Environmental Site Inspection

A joint environmental site inspection was carried out by the representatives of the Contractor, the IEC and the ET on 18 September 2017. There is no major observation or recommendation during the environmental site inspection.

Environmental Exceedance/Non-conformance/Compliant/Enquiry/Summons and Prosecution

No exceedance of the Action or Limit Level of construction noise was recorded at designated monitoring stations during the reporting period.

No exceedance of the Alert, Alarm and Action Levels of vibration was recorded during the reporting period.

No enquiry was received during the reporting period.

No environmental non-compliance event was recorded during the reporting period. No non-compliance report related to the character defining elements, historic buildings and structures was issued during the reporting period.

No complaint was received during the reporting period.

No summons/prosecution was received during the reporting period.

Future Key Issues

Work items to be undertaken in the next month include:

- Sitewide hard landscape construction;
- Timber elements repair and replacement at Blocks 3, 9, 10, 14 and 17;
- Fitting out works at Blocks 1, 3, 8, 9, 10, 11, 12, 13, 14, 17, Arbuthnot Wing and Old Bailey Wing;
- Metal works repair at Blocks 1, 3, 8, 9, 10 and 14;
- External façade repair at Blocks 3, 10, 12, 13, 14, 17 and 19;
- E&M fixing at Blocks 1, 3, 6, 7, 9, 12, 13, 14, 15, Arbuthnot Wing and Old Bailey Wing;
- Footbridge construction; and
- Enhancement works at Block 1, 3, 8, 9, 10 and 14.

Potential environmental impacts arising from the above construction activities are mainly associated with dust, construction noise, site runoff and waste management.

ERM-Hong Kong, Limited (ERM) was appointed by the Jockey Club CPS Limited (the CPS Ltd) as the Environmental Team (ET) to undertake the Environmental Monitoring and Audit (EM&A) programme for the **Central Police Station Conservation and Revitalisation Project** (the Project).

1.1 *PURPOSE OF THE REPORT*

This is the 71st EM&A report which summarises the impact monitoring results and audit findings for the EM&A programme during the reporting period from **1 to 30 September 2017**.

1.2 *STRUCTURE OF THE REPORT*

The structure of the report is as follows:

Section 1 : **Introduction**

details the scope and structure of the report.

Section 2 : **Project Information**

summarises background and scope of the Project, site description, project organization and contact details, construction programme, the construction works undertaken and the status of Environmental Permit(s)/License(s) during the reporting period.

Section 3 : **Environmental Monitoring Requirements**

summarises the monitoring parameters, monitoring programmes, monitoring methodologies, monitoring frequency, monitoring locations, Action and Limit Levels, Event/ Action Plans, environmental mitigation measures as recommended in the EIA report and relevant environmental requirements.

Section 4 : **Implementation Status on Environmental Protection Requirements**

summarises the implementation of environmental protection measures during the reporting period.

Section 5 : **Monitoring Results**

summarises the monitoring results obtained in the reporting period.

Section 6 : **Environmental Site Inspection**

summarises the audit findings of the site inspections undertaken within the reporting period.

Section 7 : **Environmental Non-conformance**

summarises any monitoring exceedance, environmental complaints and environmental summons within the reporting period.

Section 8 : **Future Key Issues**

summarises the impact forecast and monitoring schedule for the next reporting month.

Section 9 : **Conclusions**

2.1 BACKGROUND

The Chief Executive (CE)'s 2007-2008 Policy Address highlighted revitalisation as the guiding principle of heritage conservation and the Project was one of the specific proposals put forward by the CE in the same Policy Address. At the meeting of the Executive Council (ExCo) on 15 July 2008, the ExCo advised and the CE ordered that Government should enter into a partnership with the Hong Kong Jockey Club (HKJC) in the form of an agreement (or agreements) to take forward the conservation and revitalisation of the CPS project based on various guiding parameters. The Project is now being undertaken in partnership with the Development Bureau of the HKSAR Government. The HKJC has taken on board the decision at the ExCo meeting and further investigated the design and implementation of the Project. The Project is now implemented by the Jockey Club CPS Limited.

2.2 SITE DESCRIPTION

The location of the Project Site is shown in *Annex A1*. The Site is bounded by Hollywood Road to the north, Arbuthnot Road to the east, Chancery Lane to the south and Old Bailey Street to the west.

The Site comprises three Declared Monuments designated under the *Antiquities and Monuments Ordinance* in 1995. They are:

- Central Police Station;
- Former Central Magistracy; and
- Victoria Prison Compound.

They are collectively named the Central Police Station (CPS). *Annex A2* shows the location of the Declared Monuments within CPS and the buildings within the CPS.

2.3 CONSTRUCTION ACTIVITIES

A summary of the major construction activities undertaken in this reporting period is shown in *Table 2.1* and illustrated in *Annex A3*.

Table 2.1 ***Summary of Construction Activities Undertaken from 1 to 30 September 2017***

Construction Activities Undertaken

- Sitewide hard landscape construction;
 - Timber elements repair and replacement at Blocks 1, 3, 9, 10 and 14;
 - Fitting out works at Blocks 3, 8, 9, 10, 11, 12, 13, 14, 17 and Old Bailey Wing;
 - Metal works repair at Blocks 1, 3, 8, 9, 10, 12 and 14;
 - External façade repair at Blocks 3, 9, 10, 12, 13, 14 and 17;
 - E&M fixing at Blocks 1, 3, 6, 7, 9, 12, 13, 14, 15, Arbuthnot Wing and Old Bailey Wing;
 - Footbridge construction; and
 - Enhancement works at Blocks 3 and 10.
-

2.4 ***PROJECT ORGANISATION***

The Project organisation chart and contact details are shown in *Annex B*.

2.5 ***STATUS OF ENVIRONMENTAL APPROVAL DOCUMENTS***

A summary of the valid permits, licences, and/or notifications on environmental protection for this Project in the reporting period is presented in *Table 2.2*.

Table 2.2 Summary of Environmental Licensing, Notification and Permit Status

| Permit/ Licences/ Notification | Reference | Validity Period | Remarks |
|--|--|---|---|
| Environmental Permit (EP) | EP-408/2011/C | Throughout the Contract | Permit granted on 29 April 2016 |
| Notification of Construction Works as required under <i>Air Pollution Control (Construction Dust) Regulation</i> | Ref. No. 332920 | Throughout the Contract | - |
| Registration of Chemical Waste Producer under <i>Waste Disposal Ordinance</i> | Chemical Waste Producer No.: 5213-122-G2347-25 | Throughout the Contract | - |
| Disposal of C&D material/waste | Billing Account Number: 7013338 | Throughout the Contract | - |
| Effluent Discharge License under <i>Water Pollution Control Ordinance</i> | License No. WT00026824-2017 | 11 Jan 2017 – 31 Oct 2021 | The renewed licence was issued on 11 January 2017 |
| Notification of Commencement of Asbestos Abatement Work under <i>Air Pollution Control Ordinance</i> | - | Throughout the Contract | EPD's letter (EPD's ref.: (5) in EPAC/A/4/000/23 3 II) dated 2 December 2011 satisfied that the content of the asbestos abatement plan (Report No.: 0210/11/ED/0078A) is in accordance with the APCO |
| Approval of Asbestos Abatement Work (Phase 2) | - | Earliest commencement date on 26 January 2012 | EPD's letter (EPD's ref.:() in EPAC/A/4/000/23 3) dated 18 January 2012. |
| Construction Noise Permit (CNP) | GW-RS0599-17 | 17 July 2017 at 1900 hours to 16 January 2018 at 2300 hours | - |
| | GW-RS0662-17 | 4 September 2017 at 2300 hours to 3 November 2017 at 0600 hours | - |

3.1 NOISE MONITORING

3.1.1 Monitoring Location

The construction noise monitoring locations are listed in *Table 3.1* and are shown in *Annex C*.

Table 3.1 Construction Phase Noise Monitoring Station

| Monitoring Location | Proposed Construction Noise Monitoring Station | | | |
|-----------------------------|--|-----|---------------------|---|
| | ID in EM&A Manual | ID | Type of Measurement | Remark |
| Rooftop of Ho Fook Building | N2 | NM2 | Façade | - |
| Rooftop of Chancery Mansion | --- | NM6 | Façade | Accesses to the original proposed monitoring location in the EM&A Manual, Chancery House (N5), were denied; alternative location of Chancery Mansion (N6), were therefore proposed and approved by the Authorised Person (AP), the Independent Environmental Checker (IEC) and EPD. |

The noise sensitive receivers are also shown in *Annex C*.

3.1.2 Monitoring Parameters, Frequency and Programme

Weekly construction noise monitoring was conducted in accordance with the requirements stipulated in the EM&A Manual. The monitoring programme for this reporting period is shown in *Annex D*.

The construction noise levels were measured in terms of A-weighted equivalent continuous sound pressure level (L_{eq}) in decibels dB(A). $L_{eq(30min)}$ were used as the monitoring parameter for the time period in between 0700 – 1900 hours on normal weekdays. Supplementary information for data auditing, two statistical sound levels L_{10} and L_{90} - the levels exceeded for 10 and 90 percent of the time respectively, were also recorded during the monitoring for reference. The measured noise levels were logged in every 5 minutes throughout the impact monitoring period.

3.1.3 Monitoring Equipment and Methodology

Construction noise measurements were conducted in accordance with the calibration and measurement procedures as stated in *Annex – General Calibration and Measurement Procedures of Technical Memorandum on Noise from*

Construction Work other than Percussive Piling (GW-TM) issued under the Noise Control Ordinance (NCO) (Cap 400).

The sound level meters and calibrator used for the noise measurement, as listed in *Table 3.2*, complies with the IEC 651: 1979 and 804:1985 (Type 1) specifications. The calibration certificates of the sound level meters are appended in *Annex E*.

Table 3.2 *Noise Monitoring Equipment*

| Monitoring Stations | Monitoring Equipment (Sound Level Meter and Calibrator) |
|---------------------|---|
| NM2, NM6 | <u>Calibrator</u> |
| | CEL 120 (S/N 3421612) |
| | <u>Sound Level Meter</u> |
| | CEL-633A (S/N 3521757) |

Immediately prior to and following the noise measurements, the accuracy of the measurement equipment was checked using an acoustic calibrator generating a known sound pressure level at a known frequency.

Measurements were accepted as the calibration level from before and after the noise measurement agree to within 1.0 dB(A).

3.1.4 *Event / Action Plan*

Table 3.3 *Action and Limit Levels for Construction Noise Monitoring*

| Noise Monitoring Location | Action Level | Limit Level, $L_{eq(30mins), dB(A)}$ | Remark |
|---------------------------|---|--------------------------------------|---|
| NM2, NM6 | When one documented complaint is received from any one of the sensitive receivers | 75 ^(note) | Applicable during 0700 - 1900 hours on normal weekdays. |

Notes:

- (a) Acceptable Noise Levels for Area Sensitivity Rating of A/B/C. Limit Level is reduced to 70dB(A) for schools and 65dB(A) during school examination periods.
- (b) If works are to be carried out during restricted hours, the conditions stipulated in the CNP issued by the NCA have to be followed.

The Event / Action Plan (EAP) for noise monitoring is presented in *Annex F*.

3.1.5 *Mitigation Measures*

The mitigation measures in accordance with the EP, EIA and EM&A Manual and their implementation status are presented in *Annex G*.

3.2 CULTURAL HERITAGE

3.2.1 *Vibration Monitoring*

In accordance with the EM&A Manual, vibration monitoring is required and the vibration control limits and vibration monitoring proposal are defined by a specialist for AMO's approval.

Baseline Monitoring

Baseline vibration monitoring was not conducted during the reporting period.

Vibration Monitoring for Demolition Works

As no demolition works were carried out, vibration monitoring for demolition works was not conducted during the reporting period.

Vibration Monitoring for Trial Piling and Pipe/Bored Piling Works

As no trial piling or pipe/bored piling works were carried out, vibration monitoring for trial piling and piling works was not conducted during the reporting period.

Vibration Monitoring for Other Construction Works

Vibration monitoring for specific construction works other than demolition works, trial piling works and pipe/bored piling works is also required in accordance with Building Department's requirement. The monitoring location is shown in *Annex L*. The number and location of monitoring location will depend on the location of the specific construction works. The vibration monitoring should be conducted for duration of 5 minutes on a daily basis (working day) at each vibration monitoring location.

Alert, Alarm and Action Levels

The Alert, Alarm and Action (AAA) Levels are to be implemented during the vibration monitoring and shown in *Table 3.4*.

Table 3.4 *Alert, Alarm and Action (AAA) Levels for Vibration Monitoring*

| Instrument Type | Item Monitored | Alert Level | Alarm Level | Action Level |
|------------------------|-----------------------|--------------------|--------------------|---------------------|
| Vibration Monitoring | Horizontal Movement | 2.0 mm/s | 2.5 mm/s | 3.0 mm/s |

The Event / Action Plan (EAP) for vibration monitoring is shown in *Table 3.5*.

Table 3.5 *Event and Action Plan for Vibration Monitoring*

| Events | Action |
|----------------------------|---|
| Exceedance of Alert Level | Notify Management Contractor |
| Exceedance of Alarm Level | Notify Authorised Person/ Resident Engineer |
| Exceedance of Action Level | Cease Works and submit mitigation |

3.2.2 *Mitigation Measures*

Cultural heritage mitigation measures (including those for archaeology) in accordance with the EP, EIA and EM&A Manual were implemented by the Contractor and the implementation status is given in *Annex G*.

3.3 *LANDSCAPE AND VISUAL MONITORING*

In accordance with the EM&A Manual, inspections of affected trees were conducted by an experienced and appropriately trained arborist. All irregularities that deviate from the recommended tree protection measures or could impose deleterious impacts on the protected trees were reported. Besides, implementation of mitigation measures for landscape and visual resources recommended in the EIA Report were also monitored during the site inspection.

3.3.1 *Mitigation Measures*

Landscape and visual mitigation measures in accordance with the EP, EIA and EM&A Manual were implemented by the Contractor and the implementation status is given in *Annex G*.

3.4 *ENVIRONMENTAL REQUIREMENTS IN CONTRACT DOCUMENTS*

The environmental requirements as specified in the contract documents were reviewed and were covered in the EIA's requirements.

IMPLEMENTATION STATUS ON ENVIRONMENTAL PROTECTION REQUIREMENTS

The Contractor has generally implemented the environmental mitigation measures (including those for archaeology) and requirements as stated in the EIA Report, the EP and EM&A Manual and the contract documents. The implementation status during the reporting period is summarized in *Annex G*.

Status of required submissions under the EP and EM&A Manual during the reporting period is presented in *Table 4.1*.

Table 4.1 *Status of Required Submissions*

| Submission | | Submission Date |
|---------------------|--------------------------------------|------------------------|
| <i>EP Condition</i> | | |
| Condition 3.4 | 70 th Monthly EM&A Report | 14 September 2017 |

5.1 NOISE

A total of 5 sets of 30-minute construction noise measurements were carried out at the monitoring stations (NM2 and NM6) during normal weekdays of the reporting period. The monitoring results together with graphical presentations are presented in *Annex H*. The local impacts observed near the monitoring stations of NM2 and NM6 were summarised below:

- NM2: construction noise from activities in the Project Site and traffic noise from Old Bailey Street.
- NM6: construction noise from activities in the Project Site and traffic noise from Chancery Lane.

No exceedance of the Action or Limit Level of construction noise was recorded during the reporting period.

5.2 CULTURAL HERITAGE**5.2.1 *Vibration Monitoring****Trial Piling and Piling works*

No vibration monitoring was carried out for the trial piling and piling works as there were no piling works conducted during the reporting period.

Other Construction Works

Vibration monitoring carried out for other construction works during the reporting period are listed below:

- 26 vibration monitoring measurements for the structural addition and alteration works at Block 11.

The monitoring results are presented in *Annex L*.

All monitoring results were below the Alert/Alarm/Action Levels.

5.2.2 *Heritage Site Audit*

Heritage site audits were conducted on every working weekday in September 2017 by the Heritage Checker during the reporting period.

Major observations and recommendations during the site inspections were listed below:

7 September 2017

- It was observed that the waterproofing at roof of Blocks 11 and 13 was damaged. The Contractor was reminded to repair the waterproofing to protect the building.

28 September 2017

- Improvement of tidiness at Magistracy Terrace is required. The Contractor was reminded to follow up.

29 September 2017

- It was observed that the waterproofing material used for roof of Block 14 was of substandard quality. The Contractor was reminded to rectify the defective waterproofing to protect the building.
- A pond of stagnant water was observed on ground floor north terrace of Block 1, which may cause potential damage to floor tiles. The Contractor was reminded to remove the stagnant water.
- Saturation of wall at Block 9 was observed due to inadequate temporary rainwater pipe. The Contractor was reminded to complete the rainwater pipe installation or extend the temporary rainwater pipe to protect the adjacent wall.
- It was observed that the wall on second floor of Block 13 was saturated below the former canopy location, indicating water ingress from the canopy. The Contractor was reminded to repair the canopy to protect the building.

The Contractor was urged to follow-up the necessary rectification based on the inspection findings.

5.3

LANDSCAPE AND VISUAL

The tree inspection was conducted by the arborist on 5 September 2017 and major observations and recommendations in the reporting period are summarised in *Table 5.1*. The tree inspection report is contained in *Annex J*.

Table 5.1 Findings of Monthly Tree Inspection in the Reporting Period and the Last Reporting Period

| Tree No. | Botanical Name | Overall Health Condition | Arborist's Observations / Recommendations |
|----------|-------------------------------|--------------------------|--|
| Tree -5 | <i>Mangifera indica</i> | Fair | <ul style="list-style-type: none"> • Signs of pests (Mealy Bugs) were observed on the tree. • Application of pesticides and pruning of decayed logs should be carried out as soon as possible. |
| Tree -6 | <i>Aleurites moluccana</i> | Fair | <ul style="list-style-type: none"> • Signs of pest (<i>Trialeurodes vaporariorum</i>) apparently reduced due to pesticide application on 3 and 4 August 2017. • Leaves on the crown are rather sparse. • Keep monitoring on the growth of the tree. |
| Tree-7 | <i>Aleurites moluccana</i> | Fair | <ul style="list-style-type: none"> • Signs of pest (<i>Trialeurodes vaporariorum</i>) apparently reduced due to pesticide application on 3 and 4 August 2017. • Leaves on the crown are rather sparse. • Keep monitoring on the growth of the tree. |
| Tree-8 | <i>Plumeria rubra</i> | Good | <ul style="list-style-type: none"> • No further action required. |
| Tree-9 | <i>Araucaria cunninghamia</i> | Good | <ul style="list-style-type: none"> • No further action required. |
| Tree-11 | <i>Dracaena marginata</i> | Fair | <ul style="list-style-type: none"> • Construction debris observed in the last inspection has been removed from the planter. • Withered leaves were observed on the tree. • The Contractor should closely monitor the growth of the tree. |

After the monthly tree inspection by the arborist on 5 September 2017, pesticide application and pruning of decayed logs on Tree 5 has been conducted on 26 September 2017.

5.4 WASTE MANAGEMENT

Wastes generated from this Project include inert construction and demolition (C&D) materials and non-inert C&D materials. Non-inert C&D materials were made up of wastes such as general refuse and mixed construction waste. With reference to relevant handling records and trip tickets of this Project, the quantities of different types of waste generated in the reporting period are summarised in *Table 5.2*. No metal, paper/cardboard packaging or plastic waste was recycled during the reporting period. No chemical waste was collected by licenced chemical waste collector during the reporting period.

Table 5.2 *Quantities of Waste Generated from the Project*

| Month/Year | Quantity | | | | | | |
|-------------------|--|--|----------------|--------|---------------------------------------|----------|--------|
| | C&D Materials (inert) ^(a) | C&D Materials (non-inert) ^(b) | Chemical Waste | | Recycled materials | | |
| | | | Solid | Liquid | Paper/ cardboard ^(e) | Plastics | Metals |
| September 2017 | 199.78 tonnes ^(c) | 62.43 tonnes ^(d) | 0 kg | 0 L | 0 kg | 0 kg | 0 kg |

Notes:

- (a) Inert C&D materials include bricks, concrete, building debris, rubble and excavated soil.
- (b) Non-inert C&D materials include general refuse and mixed construction waste which were disposed of at landfill site and/or sorting facilities.
- (c) 199.78 tonnes of inert C&D materials were sent to Chai Wan Public Fill Barging Point.
- (d) 56.18 tonnes and 6.25 tonnes of non-inert C&D materials were disposed of at SENT Landfill and Tseung Kwan O 137 Sorting Facility, respectively.

Joint environmental site inspection was conducted by the representatives of the Contractor, IEC and the ET in the reporting period on 18 September 2017. There was no non-compliance recorded during the site inspection.

Follow-up Actions for the Last Site Audit

- Nil.

Observations and Recommendations of this Reporting Month

- Nil.

7 ENVIRONMENTAL NON-CONFORMANCE

7.1 SUMMARY OF MONITORING EXCEEDANCE

No exceedance of the Action or Limit Level of construction noise or Alert, Alarm and Action Levels of vibration was recorded during the reporting period.

7.2 SUMMARY OF ENQUIRY

No enquiry was recorded during the reporting period.

7.3 SUMMARY OF NON-COMPLIANCE

No environmental non-compliance event was recorded during the reporting period. No non-compliance report related to the character defining elements, historic buildings and structures was issued during the reporting period.

7.4 SUMMARY OF ENVIRONMENTAL COMPLAINT

No complaint was received during the reporting period. The cumulative number of complaints is presented in *Annex K*.

7.5 SUMMARY OF ENVIRONMENTAL SUMMONS AND SUCCESSFUL PROSECUTION

No summons/prosecution was received during the reporting period.

8.1 KEY ISSUES FOR THE COMING MONTH

Construction works at the CPS site have resumed except for Block 4. Works to be undertaken for the coming monitoring period are summarised in *Table 8.1*.

Table 8.1 Construction Works to be Undertaken in the Coming Month

| Work to be Undertaken |
|--|
| <ul style="list-style-type: none"> • Sitewide hard landscape construction; • Timber elements repair and replacement at Blocks 3, 9, 10, 14 and 17; • Fitting out works at Blocks 1, 3, 8, 9, 10, 11, 12, 13, 14, 17, Arbuthnot Wing and Old Bailey Wing; • Metal works repair at Blocks 1, 3, 8, 9, 10 and 14; • External façade repair at Blocks 3, 10, 12, 13, 14, 17 and 19; • E&M fixing at Blocks 1, 3, 6, 7, 9, 12, 13, 14, 15, Arbuthnot Wing and Old Bailey Wing; • Footbridge construction; and • Enhancement works at Block 1, 3, 8, 9, 10 and 14. |

Potential environmental impacts arising from the above construction activities are mainly associated with dust, construction noise, site runoff and waste management.

8.2 MONITORING SCHEDULE FOR THE NEXT MONTH

The tentative schedule of noise monitoring for the next reporting period is presented in *Annex D*.

8.3 CONSTRUCTION PROGRAMME FOR THE NEXT MONTH

The most updated construction programme for the Project is presented in *Annex I*.

The *Environmental Monitoring and Audit (EM&A) Report* presents the EM&A works undertaken during the period from 1 to 30 September 2017 in accordance with EM&A Manual and the requirement under EP-408/2011/C.

No exceedance of the Action or Limit Level of construction noise was recorded at designated monitoring stations during the reporting period.

No exceedance of Alert, Alarm and Action Levels of vibration was recorded during the reporting period.

No enquiry was received during the reporting period.

No environmental non-compliance event was recorded during the reporting period. No non-compliance report related to the character defining elements, historic buildings and structures was issued during the reporting period.

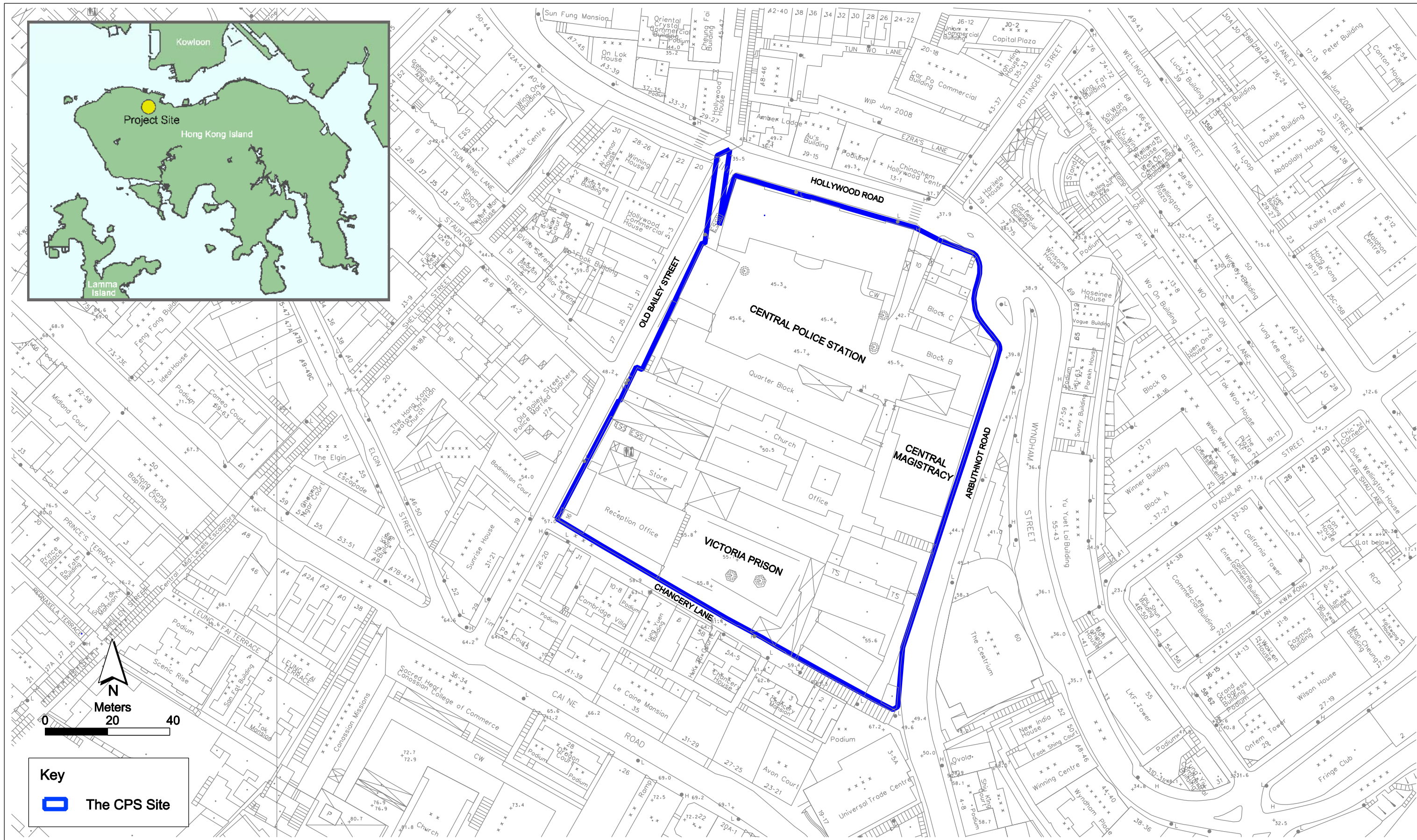
No complaint was received during the reporting period.

No summons/prosecution was received during the reporting period.

The ET will keep track on the EM&A programme to ensure compliance of environmental requirements and the proper implementation of all necessary mitigation measures.

Annex A

Locations of Works Areas and the Surroundings



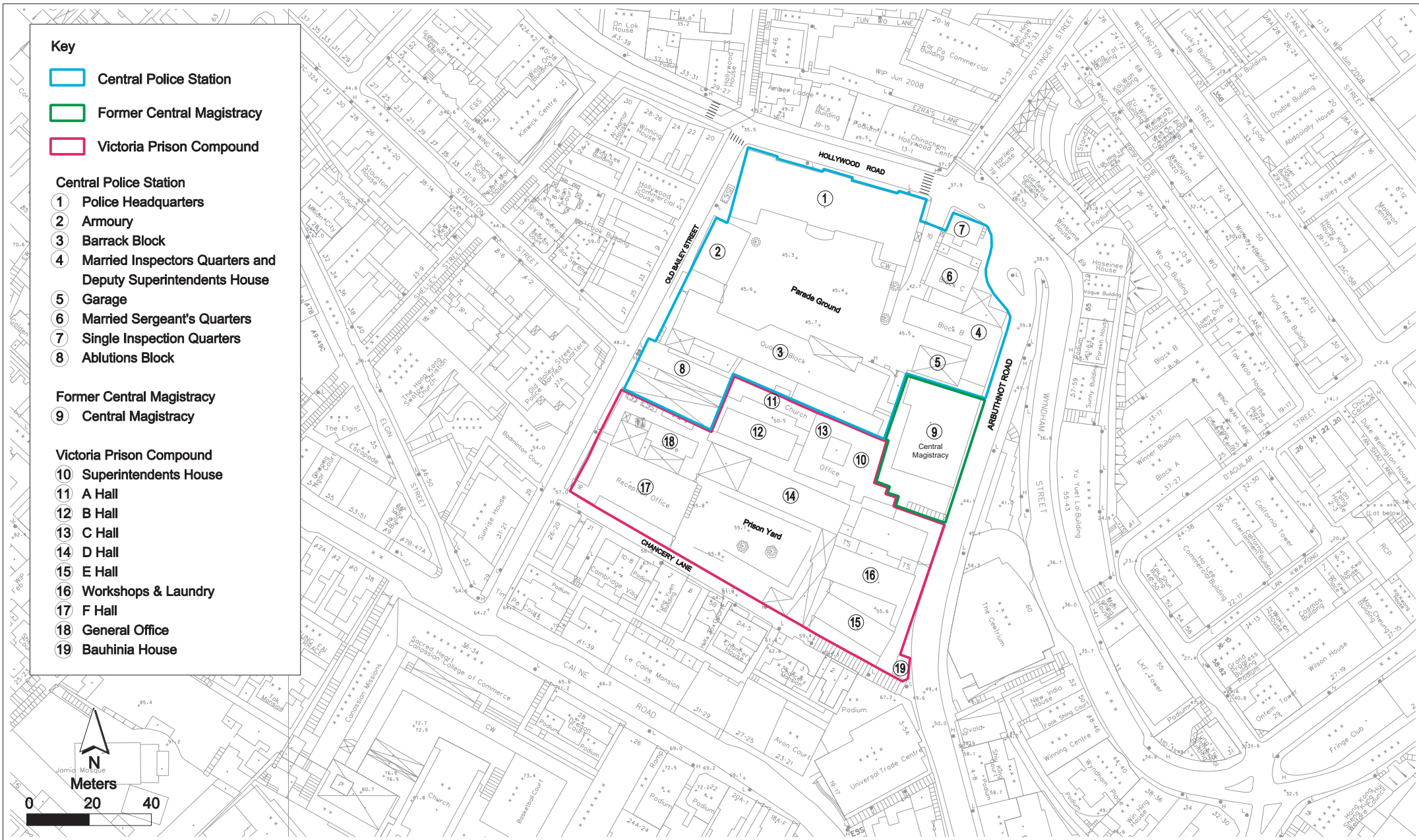
Annex A1

Project Location

**Environmental
Resources
Management**



賽馬會文物保育有限公司
The Jockey Club CPS Limited



Annex A2

Declared Monuments within the Project Site

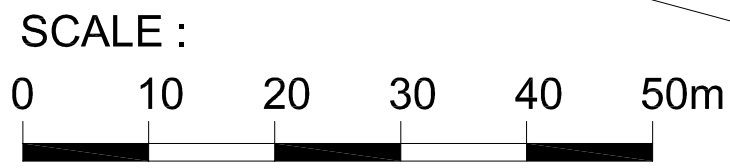
Environmental Resources Management



賽馬會文物保育有限公司
The Jockey Club CPS Limited

LEGEND

- 1. E&M Installation / Opening / Conduit Transformer delivery and installation
- 2. Excavation
- 3. Internal Building Works
- 4. Permanent Steel Works Erection
- 5. Upgrading
- 6. Roof Replacement Works / New Roof / Repair
- 7. Basement Construction
- 8. Structure A&A Works
- 9. Repair Works to Timber Window, Door, Structure, Floor and Metal Elements
- 10. Demolition Works
- 11. Facade Works / Link Bridge Repair
- 12. New Structure Construction
- 13. Balcony Repair
- 14. Paint Stripping and Plastering Works
- 15. Core Wall Construction
- 16. Utilities Diversion and Carriageway
- 17. PBR
- 18. Removal of Needle Beams
- 19. U/G Drainage
- 20. Service trench construction
- 21. Demolition of concrete block
- 22. New Balcony Construction
- 23. Construction of terminal Manhole
- 24. Emergency Works for collapsed building and BD inspection
- 25. Fitting Out Works / E&M Fixing
- 26. Enhancement Works

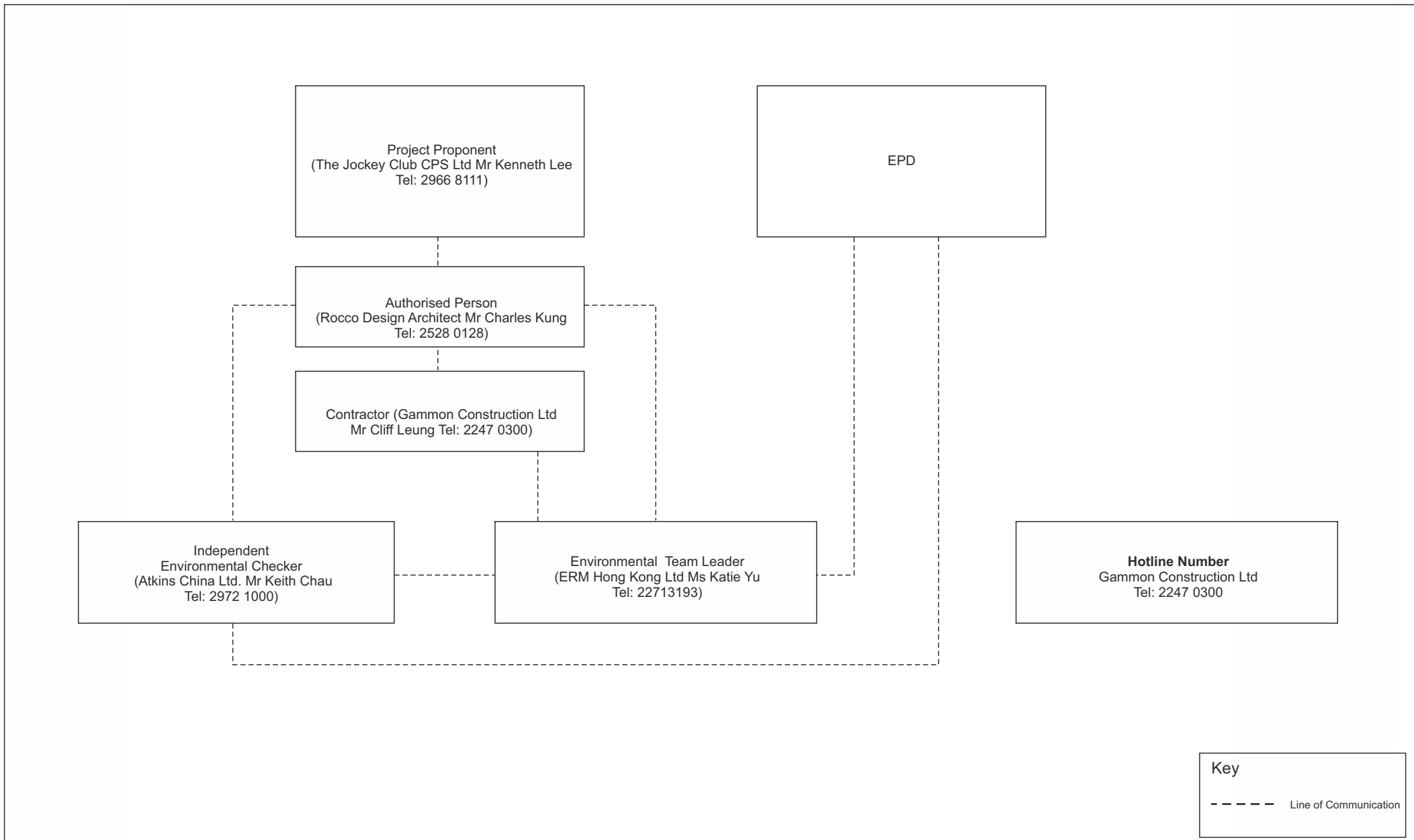


Marked for Enquiry & Complaint log (CPS/E&C/09)

Annex A3 Site Layout Plan marked with Works (Sep - 2017)

Annex B

Project Organization Chart and Contact Detail



Annex C

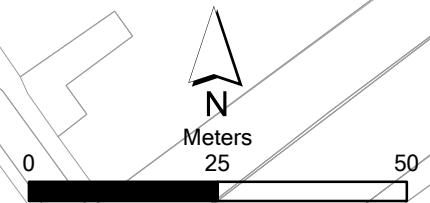
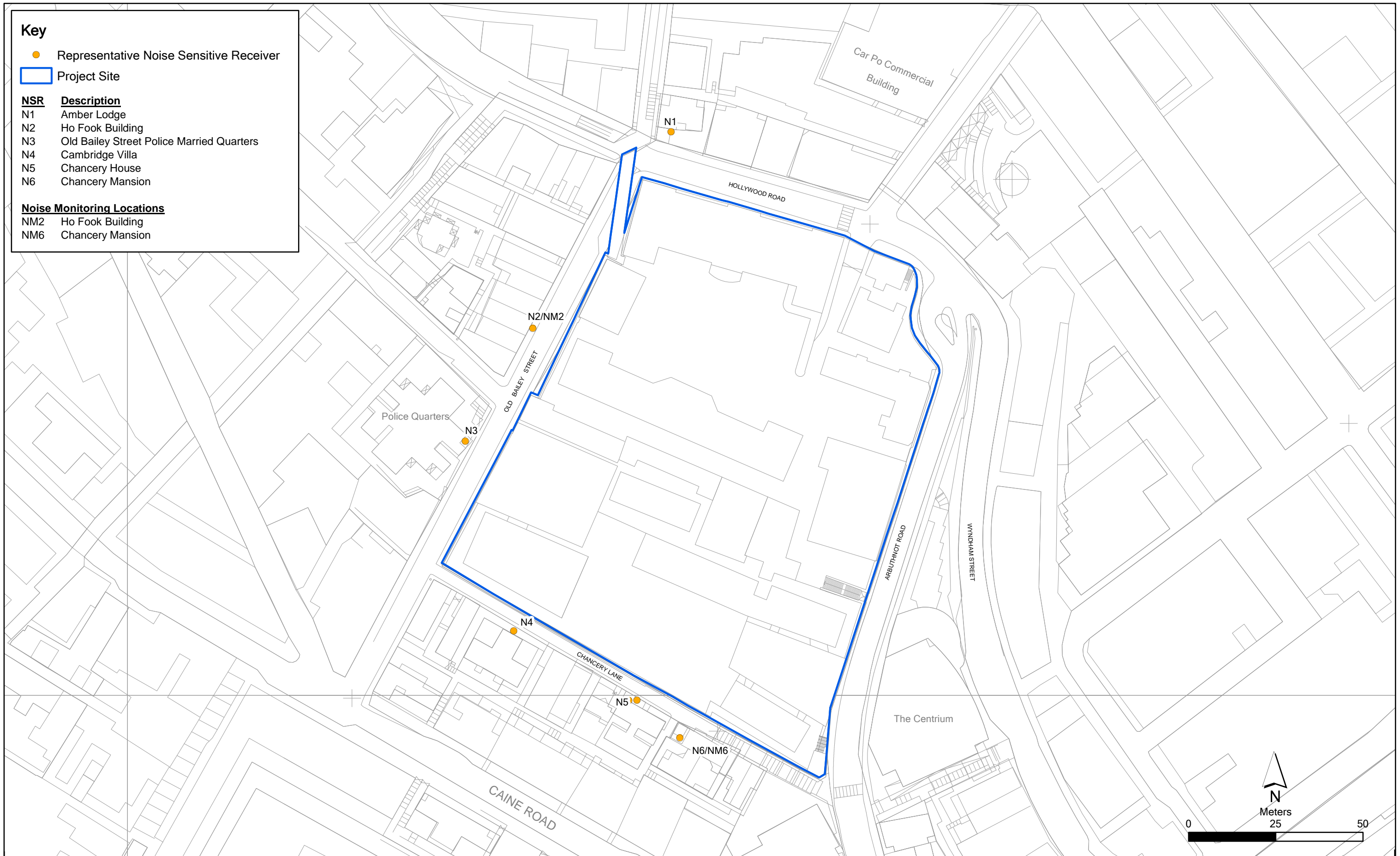
Locations of Noise
Monitoring Stations and
Noise Sensitive Receivers

Key

- Representative Noise Sensitive Receiver
- ▭ Project Site

| NSR | Description |
|-----|---|
| N1 | Amber Lodge |
| N2 | Ho Fook Building |
| N3 | Old Bailey Street Police Married Quarters |
| N4 | Cambridge Villa |
| N5 | Chancery House |
| N6 | Chancery Mansion |

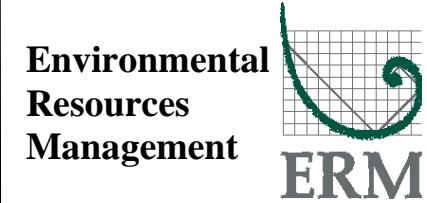
| Noise Monitoring Locations | |
|----------------------------|------------------|
| NM2 | Ho Fook Building |
| NM6 | Chancery Mansion |



Annex C

Location of Representative Noise Sensitive Receivers and Noise Monitoring Locations

File: 0095646_NSR_NM_May2012.mxd
Date: 09/05/2012



賽馬會文物保育有限公司
The Jockey Club CPS Limited

Annex D

Monitoring Schedule of the Reporting Period and Next Month

**Central Police Station Compound Conservation and Revitalisation
(Ho Fook Building - NM2 & Chancery Mansion - NM6)
Monitoring Schedule for Reporting Month - September 2017**

| Sunday | Monday | Tuesday | Wednesday | Thursday | Friday | Saturday |
|--------|----------------------------------|----------------------------------|----------------------------------|----------------------------------|----------------------------------|----------|
| | | | | | 01-Sep | 02-Sep |
| | | | | | | |
| 03-Sep | 04-Sep | 05-Sep | 06-Sep | 07-Sep | 08-Sep | 09-Sep |
| | | | Noise Monitoring at NM2 & NM6 | | | |
| 10-Sep | 11-Sep | 12-Sep | 13-Sep | 14-Sep | 15-Sep | 16-Sep |
| | | Noise Monitoring at NM2 & NM6 | | | | |
| 17-Sep | 18-Sep | 19-Sep | 20-Sep | 21-Sep | 22-Sep | 23-Sep |
| | Noise Monitoring at NM2 & NM6 | | | | Noise Monitoring at NM2 & NM6 | |
| 24-Sep | 25-Sep | 26-Sep | 27-Sep | 28-Sep | 29-Sep | 30-Sep |
| | | | | Noise Monitoring at NM2 & NM6 | | |

**Central Police Station Compound Conservation and Revitalisation
(Ho Fook Building - NM2 & Chancery Mansion - NM6)
Monitoring Schedule for Next Reporting Month - October 2017**

| Sunday | Monday | Tuesday | Wednesday | Thursday | Friday | Saturday |
|--------|----------------------------------|----------------------------------|----------------------------------|----------------------------------|----------------------------------|----------|
| | | | | | | |
| 01-Oct | 02-Oct | 03-Oct | 04-Oct | 05-Oct | 06-Oct | 07-Oct |
| | | Noise Monitoring at NM2 & NM6 | | | | |
| 08-Oct | 09-Oct | 10-Oct | 11-Oct | 12-Oct | 13-Oct | 14-Oct |
| | Noise Monitoring at NM2 & NM6 | | | | Noise Monitoring at NM2 & NM6 | |
| 15-Oct | 16-Oct | 17-Oct | 18-Oct | 19-Oct | 20-Oct | 21-Oct |
| | | | | Noise Monitoring at NM2 & NM6 | | |
| 22-Oct | 23-Oct | 24-Oct | 25-Oct | 26-Oct | 27-Oct | 28-Oct |
| | | | Noise Monitoring at NM2 & NM6 | | | |
| 29-Oct | 30-Oct | 31-Oct | | | | |
| | | Noise Monitoring at NM2 & NM6 | | | | |

Annex E

Calibration Reports for Calibrators and Sound Level Meters



Certificate of Calibration

校正證書

Certificate No. : C166691
證書編號

ITEM TESTED / 送檢項目 (Job No. / 序引編號 : IC16-2717) Date of Receipt / 收件日期 : 28 November 2016

Description / 儀器名稱 : Acoustic Calibrator
Manufacturer / 製造商 : Casella
Model No. / 型號 : CEL-120/1
Serial No. / 編號 : 3421612
Supplied By / 委託者 : Envirotech Services Co.
Room 113, 1/F, My Loft, 9 Hoi Wing Road, Tuen Mun,
New Territories, Hong Kong

TEST CONDITIONS / 測試條件

Temperature / 溫度 : (23 ± 2)°C Relative Humidity / 相對濕度 : (55 ± 20)%
Line Voltage / 電壓 : ---

TEST SPECIFICATIONS / 測試規範

Calibration check

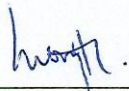
DATE OF TEST / 測試日期 : 30 November 2016


TEST RESULTS / 測試結果

The results apply to the particular unit-under-test only.
The results do not exceed manufacturer's specification.
The results are detailed in the subsequent page(s).

The test equipment used for calibration are traceable to National Standards via :

- The Government of The Hong Kong Special Administrative Region Standard & Calibration Laboratory
- Agilent Technologies / Keysight Technologies
- Rohde & Schwarz Laboratory, Germany
- Fluke Everett Service Center, USA

Tested By : 
測試 : H T Wong
Technical Officer

Certified By : 
核證 : K O Lee
Project Engineer

Date of Issue : 7 December 2016
簽發日期

The test equipment used for calibration are traceable to the Nation Standards as specified in this certificate. This certificate shall not be reproduced except in full, without the prior written approval of this laboratory.

本證書所載校正用之測試器材均可溯源至國際標準。局部複印本證書需先獲本實驗所書面批准。

Certificate of Calibration

校正證書

Certificate No. : C166691

證書編號

1. The unit-under-test (UUT) was allowed to stabilize in the laboratory for over 12 hours before the commencement of the test.
2. The results presented are the mean of 3 measurements at each calibration point.
3. Test equipment :

| <u>Equipment ID</u> | <u>Description</u> | <u>Certificate No.</u> |
|---------------------|-----------------------------------|------------------------|
| CL130 | Universal Counter | C163709 |
| CL281 | Multifunction Acoustic Calibrator | PA160023 |
| TST150A | Measuring Amplifier | C161175 |

4. Test procedure : MA100N.

5. Results :

5.1 Sound Level Accuracy

| UUT Nominal Value | Measured Value (dB) | Mfr's Spec. (dB) | Uncertainty of Measured Value (dB) |
|----------------------|------------------------|---------------------|---------------------------------------|
| 94 dB, 1 kHz | 94.1 | ± 0.25 | ± 0.2 |
| 114 dB, 1 kHz | 114.1 | | |

5.2 Frequency Accuracy

| UUT Nominal Value (kHz) | Measured Value (kHz) | Mfr's Spec. | Uncertainty of Measured Value (Hz) |
|----------------------------|-------------------------|----------------|---------------------------------------|
| 1 | 1.000 0 | 1 kHz ± 5 Hz | ± 0.1 |

Remark : The uncertainties are for a confidence probability of not less than 95 %.

Note :

Only the original copy or the laboratory's certified true copy is valid.

The values given in this Certificate only relate to the values measured at the time of the test and any uncertainties quoted will not include allowance for the equipment long term drift, variations with environment changes, vibration and shock during transportation, overloading, mis-handling, or the capability of any other laboratory to repeat the measurement. Sun Creation Engineering Limited shall not be liable for any loss or damage resulting from the use of the equipment.



輝創工程有限公司

Sun Creation Engineering Limited

Calibration and Testing Laboratory

Certificate of Calibration

校正證書

Certificate No. : C166692

證書編號

ITEM TESTED / 送檢項目 (Job No. / 序引編號 : IC16-2717) Date of Receipt / 收件日期 : 28 November 2016

Description / 儀器名稱 : Sound Level Meter

Manufacturer / 製造商 : Casella

Model No. / 型號 : CEL-633A

Serial No. / 編號 : 3521757

Supplied By / 委託者 : Envirotech Services Co.

Room 113, 1/F, My Loft, 9 Hoi Wing Road, Tuen Mun,
New Territories, Hong Kong

TEST CONDITIONS / 測試條件

Temperature / 溫度 : $(23 \pm 2)^{\circ}\text{C}$

Relative Humidity / 相對濕度 : $(55 \pm 20)\%$

Line Voltage / 電壓 : ---

TEST SPECIFICATIONS / 測試規範

Calibration check

DATE OF TEST / 測試日期 : 30 November 2016

TEST RESULTS / 測試結果

The results apply to the particular unit-under-test only.

The results do not exceed manufacturer's specification.

The results are detailed in the subsequent page(s).

The test equipment used for calibration are traceable to National Standards via :

- The Government of The Hong Kong Special Administrative Region Standard & Calibration Laboratory
- Agilent Technologies / Keysight Technologies
- Rohde & Schwarz Laboratory, Germany
- Fluke Everett Service Center, USA

Tested By

測試

H T Wong

Technical Officer

Certified By

核證

K C Lee

Project Engineer

Date of Issue

簽發日期

7 December 2016

The test equipment used for calibration are traceable to the Nation Standards as specified in this certificate. This certificate shall not be reproduced except in full, without the prior written approval of this laboratory.

本證書所載校正用之測試器材均可溯源至國際標準。局部複印本證書需先獲本實驗室所書面批准。

Sun Creation Engineering Limited – Calibration & Testing Laboratory

c/o 4/F, Tsing Shan Wan Exchange Building, 1 Hing On Lane, Tuen Mun, New Territories, Hong Kong

輝創工程有限公司 – 校正及檢測實驗室

c/o 香港新界屯門興安里一號青山灣機樓四樓

Tel/電話: 2927 2606 Fax/傳真: 2744 8986

E-mail/電郵: callab@suncreation.com

Website/網址: www.suncreation.com

Page 1 of 4

Certificate of Calibration

校正證書

Certificate No. : C166692
證書編號

- The unit-under-test (UUT) was allowed to stabilize in the laboratory for over 12 hours, and switched on to warm up for over 10 minutes before the commencement of the test.
- Self-calibration using the Casella Acoustic Calibrator CEL-120/1, S/N : 3421612 was performed before the test.
- The results presented are the mean of 3 measurement at each calibration point.
- Test equipment :

| Equipment ID | Description | Certificate No. |
|--------------|-------------------------------------|-----------------|
| CL280 | 40 MHz Arbitrary Waveform Generator | C160077 |
| CL281 | Multifunction Acoustic Calibrator | PA160023 |

- Test procedure : MA101N.

- Results :

- 6.1 Sound Pressure Level

- 6.1.1 Reference Sound Pressure Level

| UUT Setting | | Applied Value | | UUT Reading (dB) | IEC 61672 Class 1 Spec. (dB) |
|----------------|---------------------|---------------|-------------|------------------|------------------------------|
| Time Weighting | Frequency Weighting | Level (dB) | Freq. (kHz) | | |
| L _F | A | 114.00 | 1 | 113.7 | ± 1.1 |

- 6.1.2 Linearity

| UUT Setting | | Applied Value | | UUT Reading (dB) |
|----------------|---------------------|---------------|-------------|------------------|
| Time Weighting | Frequency Weighting | Level (dB) | Freq. (kHz) | |
| L _F | A | 114.00 | 1 | 113.7 (Ref.) |
| | | 104.00 | | 103.7 |
| | | 94.00 | | 93.5 |

IEC 61672 Class 1 Spec. : ± 0.6 dB per 10 dB step and ± 1.1 dB for overall different.

- 6.2 Time Weighting

| UUT Setting | | Applied Value | | UUT Reading (dB) | IEC 61672 Class 1 Spec. (dB) |
|----------------|---------------------|---------------|-------------|------------------|------------------------------|
| Time Weighting | Frequency Weighting | Level (dB) | Freq. (kHz) | | |
| L _F | A | 114.00 | 1 | 113.7 | Ref. |
| L _S | | | | 113.7 | ± 0.3 |

The test equipment used for calibration are traceable to the Nation Standards as specified in this certificate. This certificate shall not be reproduced except in full, without the prior written approval of this laboratory.

本證書所載校正用之測試器材均可溯源至國際標準。局部複印本證書需先獲本實驗室所書面批准。

Certificate of Calibration

校正證書

Certificate No. : C166692

證書編號

6.3 Frequency Weighting

6.3.1 A-Weighting

| UUT Setting | | Applied Value | | UUT Reading (dB) | IEC 61672 Class 1 Spec. (dB) |
|----------------|---------------------|---------------|----------|------------------|------------------------------|
| Time Weighting | Frequency Weighting | Level (dB) | Freq. | | |
| L _F | A | 94.00 | 63 Hz | 87.4 | -26.2 ± 1.5 |
| | | | 125 Hz | 97.5 | -16.1 ± 1.5 |
| | | | 250 Hz | 105.0 | -8.6 ± 1.4 |
| | | | 500 Hz | 110.4 | -3.2 ± 1.4 |
| | | | 1 kHz | 113.7 | Ref. |
| | | | 2 kHz | 114.9 | +1.2 ± 1.6 |
| | | | 4 kHz | 114.6 | +1.0 ± 1.6 |
| | | | 8 kHz | 112.2 | -1.1(+2.1 ; -3.1) |
| | | | 12.5 kHz | 108.1 | -4.3(+3.0 ; -6.0) |

6.3.2 C-Weighting

| UUT Setting | | Applied Value | | UUT Reading (dB) | IEC 61672 Class 1 Spec. (dB) |
|----------------|---------------------|---------------|----------|------------------|------------------------------|
| Time Weighting | Frequency Weighting | Level (dB) | Freq. | | |
| L _F | C | 94.00 | 63 Hz | 112.8 | -0.8 ± 1.5 |
| | | | 125 Hz | 113.5 | -0.2 ± 1.0 |
| | | | 250 Hz | 113.7 | 0.0 ± 1.0 |
| | | | 500 Hz | 113.7 | 0.0 ± 1.0 |
| | | | 1 kHz | 113.7 | Ref. |
| | | | 2 kHz | 113.5 | -0.2 ± 1.0 |
| | | | 4 kHz | 112.8 | -0.8 ± 1.0 |
| | | | 8 kHz | 110.4 | -3.0 (+1.5 ; -3.0) |
| | | | 12.5 kHz | 106.2 | -6.2 (+3.0 ; -6.0) |

The test equipment used for calibration are traceable to the Nation Standards as specified in this certificate. This certificate shall not be reproduced except in full, without the prior written approval of this laboratory.

本證書所載校正用之測試器材均可溯源至國際標準。局部複印本證書需先獲本實驗室所書面批准。



Certificate of Calibration

校正證書

Certificate No. : C166692
證書編號

Remarks : - UUT Microphone Model No. : CEL-251 & S/N : 1950

- Mfr's Spec. : IEC 61672 Class 1

| | | | |
|------------------------------------|--------|------------------|---------------------------|
| - Uncertainties of Applied Value : | 114 dB | : 63 Hz - 125 Hz | : ± 0.45 dB |
| | | 250 Hz - 500 Hz | : ± 0.40 dB |
| | | 1 kHz | : ± 0.30 dB |
| | | 2 kHz - 4 kHz | : ± 0.45 dB |
| | | 8 kHz | : ± 0.55 dB |
| | | 12.5 kHz | : ± 0.80 dB |
| | 104 dB | : 1 kHz | : ± 0.10 dB (Ref. 114 dB) |
| | 94 dB | : 1 kHz | : ± 0.10 dB (Ref. 114 dB) |

- The uncertainties are for a confidence probability of not less than 95 %.

Note :

Only the original copy or the laboratory's certified true copy is valid.

The values given in this Certificate only relate to the values measured at the time of the test and any uncertainties quoted will not include allowance for the equipment long term drift, variations with environment changes, vibration and shock during transportation, overloading, mis-handling, or the capability of any other laboratory to repeat the measurement. Sun Creation Engineering Limited shall not be liable for any loss or damage resulting from the use of the equipment.

The test equipment used for calibration are traceable to the Nation Standards as specified in this certificate. This certificate shall not be reproduced except in full, without the prior written approval of this laboratory.

本證書所載校正用之測試器材均可溯源至國際標準。局部複印本證書需先獲本實驗室所書面批准。

Annex F

Event / Action Plans for Noise

Annex F Event and Action Plan for Noise

| Event | Action | | | |
|---------------------|---|---|--|---|
| | Environmental Team (ET) | Independent Environmental Checker (IEC) | Authorised Person (AP) | Contractor |
| Action Level | <ol style="list-style-type: none"> 1. Notify IEC and Contractor; 2. Carry out investigation; 3. Report the results of investigation to the IEC, AP and Contractor; 4. Discuss with the Contractor and formulate remedial measures; 5. Increase monitoring frequency to check mitigation effectiveness. | <ol style="list-style-type: none"> 1. Review the analysed results submitted by the ET; 2. Review the proposed remedial measures by the Contractor and advise the AP accordingly; 3. Supervise the implementation of remedial measures. | <ol style="list-style-type: none"> 1. Confirm receipt of notification of failure in writing; 2. Notify Contractor; 3. Require Contractor to proposed remedial measures for the analysed noise problem; 4. Ensure remedial measures are properly implemented. | <ol style="list-style-type: none"> 1. Submit noise mitigation proposals to IEC; 2. Implement noise mitigation proposals. |
| Limit Level | <ol style="list-style-type: none"> 1. Identify source; 2. Inform IEC and AP; 3. Repeat measurements to confirm findings; 4. Increase monitoring frequency; 5. Carry out analysis of Contractor's working procedures to determine possible mitigation to be implemented; 6. Inform IEC, AP and EPD the causes and actions taken for the exceedances; 7. Assess effectiveness of Contractor's remedial actions and keep IEC, EPD and AP informed of the results; 8. If exceedance stops, cease additional monitoring. | <ol style="list-style-type: none"> 1. Discuss amongst AP, ET, and Contractor on the potential remedial actions; 2. Review Contractors remedial actions whenever necessary to assure their effectiveness and advise the AP accordingly; 3. Supervise the implementation of remedial measures. | <ol style="list-style-type: none"> 1. Confirm receipt of notification of failure in writing; 2. Notify Contractor; 3. Require Contractor to propose remedial measures for the analysed noise problem; 4. Ensure remedial measures properly implemented; 5. If exceedance continues, consider what portion of the work is responsible and instruct the Contractor to stop that portion of work until the exceedance is abated. | <ol style="list-style-type: none"> 1. Take immediate action to avoid further exceedance; 2. Submit proposals for remedial actions to IEC within 3 working days of notification; 3. Implement the agreed proposals; 4. Resubmit proposals if problem still not under control; 5. Stop the relevant portion of works as determined by the AP until the exceedance is abated. |

Annex G

Summary of Implementation Status

Annex G Implementation Schedule for Environmental Protection Measures

| EIA Ref. | EM&A Ref. | Recommended Mitigation Measures | Location | When to Implement the Measure | Status |
|--------------------------|-----------|--|---|---|--------|
| Cultural Heritage | | | | | |
| S3.9.1 | S3.2.6 | Subject to the outcome of the archaeological investigation, if archaeological deposits are identified to be impacted by the proposed development, appropriate mitigation measures will be recommended and agreed with AMO. | In accordance with the recommendations in the Archaeological Action Plan (AAP) issued on 21 Dec 11 and approved on 30 Dec 11 by AMO | During detailed design and construction | √ |
| S3.9.2 | S3.3.1 | <u>Vibration Monitoring</u> A baseline condition survey and baseline vibration impact will be conducted by a specialist for the approval of AMO and Buildings Department prior to commencement of the construction works to define the vibration control limits and recommend a vibration monitoring proposal for the concerned historic buildings and structures in and outside CPS for AMO's prior approval before commencement of the construction works. | Historic buildings and structures in CPS, the granite walls at Old Bailey Street and the proposed Grade 3 historic building (No. 20 Hollywood Road) | During detailed design and construction | √ |
| S3.9.2 | S3.3.3 | <u>Compliance of the Approved Measures and Auditing</u> Staff training by an experience building conservation expert or relevant competent person(s) in the environmental team of the project should be provided to the on-site staffs, contractors, sub-contractors and workers of the project before commencement of works to ensure their full understanding of the approved protection schedule, restoration proposal and work methodologies related to cultural heritage, and their respective responsibilities in the implementation of the environmental protection measures. Regular site audit for cultural heritage should be carried out in the construction phase by an experience building conservation expert in the environmental team ("the Heritage Checker") to investigate the site practice of the contractors and workers and their compliance of the approved work methodologies with respect of conservation works, mitigations for cultural heritage and any related works. A detailed | Whole site | Prior to and during construction | <> |

| EIA Ref. | EM&A Ref. | Recommended Mitigation Measures | Location | When to Implement the Measure | Status |
|----------|-----------|---|------------|---|--|
| | | <p>proposal of the regular audit such as methodology (e.g. performance and monitoring indicators, control tools, frequency of the audit, etc.) and the conservation professionals to be engaged should be agreed with AMO prior to work commencement.</p> <p>The Heritage Checker shall also attend the regular site meetings with AMO and report the compliance and effectiveness of the mitigation measures for cultural heritage.</p> | | | |
| S3.9.3 | S3.3.4 | <p><u>Archival Recording</u></p> <p>An archival recording should be conducted to provide a detailed reference for the update of the Conservation Management Plan and inventory of historical features of the monuments, the preparation of as-built drawings showing the condition of the historic buildings and structures after the completion of the construction works. These archival records will be a reference source for future maintenance of the character defining elements, conservation of the monuments, interpretation and conservation education of the Site. The archival recording shall include but not limit to the video and photographic recording on the detailed process of the repair trials for different kinds of historical features, conservation works of character defining elements and historic fabrics of the monuments, and a written records of any new changes to the detailed design made in the construction phase illustrate with photos and drawings. A full set of the archives records (including both hard and soft copies) should be submitted to the AMO for approval after the work completion for record purpose. Any new findings related to the conservation of built heritage in the Site identified during the detailed design stage and construction phases shall be properly recorded in details for notification to the AMO and update of the Conservation Management Plan.</p> | Whole Site | During detailed design, construction and prior to operation | N/A – Archival recording will be conducted at later stage. |
| S3.7.3 | - | <p><u>General Construction Methods</u></p> <p>Prior to the commencement of the modification/refurbishment works at an existing building or structure (e.g. masonry walls near the Old Bailey Wing) , a site survey will be carried out by the design team, and all building dimensions and levels of the building/structure shown will be</p> | Whole site | During construction | At around 10:05pm on 29 May 2016, the northwest corner of Block 4 partially collapsed. The collapsed area includes northwest corner roof, west elevation façade wall, north elevation façade wall west part, 1/F and 2/F verandah west part, 2/F |

| EIA Ref. | EM&A Ref. | Recommended Mitigation Measures | Location | When to Implement the Measure | Status |
|----------------|-----------|---|------------|---|--|
| | | checked and confirmed by the contractor. Non-percussive piling methods will be adopted for the construction of the foundation for the new buildings. Protective and precaution measures to the existing buildings and structure adjacent to the work area (including the proposed Grade 3 historic building (No. 20 Hollywood road) and the granite boundary walls between the Ablutions Block of the police station (building no. 08) and the General Office of the prison area (building no. 18) which is adjacent to the new construction of the Old Bailey Wing and for an old granite walls at Old Bailey Street within 15m from the new construction) shall be provided to avoid damage to the existing features and to safeguard the structural integrity during the course of construction. Small scale handheld pneumatic tools with minimal vibration impact to the existing buildings/ structures are selected so as to have a better logistic and handling at the existing buildings and structures, which usually have only narrow working areas. In cases of the local demolition of structural elements, demountable platforms will be erected to temporarily support the affected area and divert the loading from above to avoid instability and create excessive cracking and settlement of the building/structure. | | | west balcony, floor structure in room 04/5/03. Temporary propping has been undertaken to prevent further collapse. Construction works have resumed except Block 4. |
| S3.7.1 & 3.7.2 | - | <p>Implementation and update of the Conservation Management Plan (CMP). Any new findings related to the conservation of the built heritage in the site identified during the detailed design and construction stage shall be properly recorded in details for the notification to the AMO and update in the CMP. After the construction, a cartographic and photographic recording on the restored historic buildings, historic features and the site shall be conducted and the following records shall be included into the CMP as appendices for updating and record purpose:</p> <ul style="list-style-type: none"> • one set of measured drawings and photographic records showing the as-built condition of historic buildings and structures; and • an updated inventory list of the historic features together with the cross referenced location plans and photo records. <p>One set of updated CMP shall be submitted to the AMO for approval before the operation stage of the project.</p> | Whole site | During detailed design, construction, post-construction and operation | √ - CMP was implemented during the reporting month. There were no updates for the CMP. |

| EIA Ref. | EM&A Ref. | Recommended Mitigation Measures | Location | When to Implement the Measure | Status |
|-------------------------------|-----------|---|------------|-------------------------------|--|
| <i>Landscape & Visual</i> | | | | | |
| S4.7.27 | - | <p><u><i>In-situ Tree Protection - Cordon Zone (CZ)</i></u></p> <p>Cordon off each tree along its drip line (below the crown) with a chain-link fencing of 2.5 m height with padlocked gate, allowing limited access to area only to authorized persons. The base of the perimeter fence will be sealed up to 30 cm height to ensure that no construction drainage water will enter. If grouting is to be conducted less than 5 m from the edge of the CZ, a waterproof membrane will be installed below the ground to a depth of 1.5 m on the outer edge of the CZ to prevent the subsurface lateral movement of contaminated construction wastewater from intruding the soil inside the CZ.</p> | Whole site | During construction | <p><></p> <p>The chain-link fencing for the retained trees has been removed to enable the laying of floor slab and repairing of the planters. A tree protection zone around the planter of each tree has been provided. Barricades are set up for Tree 6, 7, 8 and 9 and the barricaded zone is clear of construction materials or equipment. The vicinity of Tree 5 is also clear of construction materials or equipment. A temporary shelter has been erected around Tree 11. No major construction works in the vicinity of the trees or within the CPS site are being carried out.</p> |
| S4.7.2 | - | <p><u><i>In-situ Tree Protection - Advanced & Phased Root Pruning</i></u></p> <p>All edges of the CZ that will be affected by excavation will undergo root pruning by a trained arborist or horticulturist, in advance of the earth work. The entire affected length of the CZ, plus 3 m additional length at both ends, shall be designated as the root pruning segment (RPS). The require trench will be opened manually in the RPS, be 1.5 m deep and 1 m wide, and closed on the same day after pruning with a good soil mix. All roots with a diameter >20 mm encountered in the course of trench opening shall be cut flushed with the inner wall of the trench. If the RPS exceeds one-quarter of the CZ circumference, the root pruning should be conducted in two stages. Each phase will tackle half of the RPS length. After the first phase, the tree will be allowed to recuperate for not less than four months before the second phase root pruning is conducted. The RPS shall be protected by sheet piles along the outer edge. The rig that installs the piles and the associated operations shall not intrude into the CZ or injure the protected tree.</p> | Whole site | During construction | N/A - no root pruning has been conducted yet |
| S4.7.2 | - | <p><u><i>In-situ Tree Protection - Foliage cleansing system</i></u></p> <p>A sprinkler cleansing system will be installed either in the crown of the</p> | Whole site | During construction | N/A - The sprinkler cleansing system has been removed as major dust-generating works within the |

| EIA Ref. | EM&A Ref. | Recommended Mitigation Measures | Location | When to Implement the Measure | Status |
|----------|-----------|---|--|---|--|
| | | tree or at a suitable location on an adjacent building to provide the means to wash the foliage of the accumulated dust when necessary, particularly in the dry season. | | | CPS site have been completed. |
| S4.7.2 | S4 | <p><u>In-situ Tree Protection - Monthly inspection</u></p> <p>Monthly inspection of affected trees by an experienced and appropriately trained arborist or horticulturist using Form 1 – Tree Group Inspection Form and Form 2 – Tree Risk Assessment Form developed by Development Bureau (http://www.trees.gov.hk/en/doc/TRAGuideline_July2010version_combine.pdf) or a form designed by a tree expert and approved by Tree Management Office. All irregularities that deviate from the recommended tree protection measures, or could impose deleterious impacts on the protected trees, must be reported to the authorized person or the tree expert within two days.</p> | Whole site | During construction | √ |
| S4.7.2 | - | <p><u>Light Control</u></p> <p>Control of night-time lighting shall be implemented to minimise impact to adjacent VSRs.</p> | Whole site | During construction and operation | √ |
| S4.7.2 | S4 | <p><u>Compensatory Tree Planting</u></p> <p>A new planting site has been identified for compensatory tree planting in the Parade Ground. The planting is to compensate for felling of T10 and T10a. The existing tree site will be enlarged to become a wide tree strip to accommodate the compensatory trees. The entire strip of land that accommodates T1 to T4 should be revamped to improve the soil condition for future tree growth.</p> <p>The new tree strip should be 4 m wide and covered by porous unit pavers to permit the entry of rain and irrigation water and air exchange between the soil and the atmosphere. The unit pavers should be supported by small columns to create a vault-like structure so as to avoid compaction of the underlying soil due to pedestrian trampling. The unit pavers will be movable to provide access to the soil</p> | At identified compensatory tree planting location at the Parade Ground | During detailed design and construction | √ - Planters of the compensatory trees are being built in the Parade Ground during the reporting period. |

| EIA Ref. | EM&A Ref. | Recommended Mitigation Measures | Location | When to Implement the Measure | Status |
|----------|-----------|--|---------------------|---|--|
| | | <p>underneath so that fertilizers and conditioners could be added on a regular basis. The air conditioner unit currently located near the proposed planting site should also be removed. This new tree planting site should also be provided with proper irrigation.</p> <p>Pursuant to the "Environment, Transport and Works Bureau Technical Circular (Works) No. 3/2006 Tree Preservation", the compensation ratio should preferably be 1:1 according to trunk girth. An aggregate DBH of the new trees would be 60cm, the rate of compensation is beyond the requirements</p> <p>The replacement trees should be planted in accordance with the requirement of the landscape proposal approved by the Planning Department.</p> | | | |
| S4.7.2 | S4 | <p><u>Existing Granite Revetment Wall</u></p> <p>The inner stone face along the southern wall of the Site shall be preserved to its original historical appearance.</p> | Inner Southern Wall | During detailed design and construction | √ |
| S4.7.2 | - | <p><u>New Custom Paving</u></p> <p>New, Patterned, High Quality, Concrete Custom Pavers should replace most of the existing paving in the open spaces.</p> | Whole site | During detailed design and construction | √ |
| S4.7.2 | S4 | <p><u>In-situ Tree Protection - Quarterly inspection</u></p> <p>Quarterly Inspection of affected and newly planted trees by an experienced and appropriately trained arborist or horticulturist using Form 1 - Tree Group Inspection Form and Form 2 - Tree Risk Assessment Form developed by Development Bureau (http://www.trees.gov.hk/en/doc/TRAGuideline_July2010version_combine.pdf) or a form designed by a tree expert and approved by Tree Management Office for a period of 12 months after construction.</p> | Whole site | During post construction and operation | N/A - The quarterly inspection will be conducted at later stage. |
| Noise | | | | | |

| EIA Ref. | EM&A Ref. | Recommended Mitigation Measures | Location | When to Implement the Measure | Status |
|----------|-----------|---|------------|-------------------------------|--------|
| S5.9 | - | <p>The following site practices should be followed during the construction of the Project:</p> <ul style="list-style-type: none"> • Only well-maintained plant will be operated on-site and plant will be serviced regularly during the construction phase; • Silencers or mufflers on construction equipment will be utilised and will be properly maintained during the construction phase; • Mobile plant, if any, will be sited as far away from NSRs as possible; • Machines and plant (such as trucks) that may be in intermittent use will be shut down between work periods or will be throttled down to a minimum; • Plant known to emit noise strongly in one direction will, wherever possible, be orientated so that the noise is directed away from the nearby NSRs; and • Material stockpiles and other structures will be effectively utilised, wherever practicable, in screening noise from on-site construction activities. | Whole Site | During construction | √ |
| S5.9 | - | Noise insulating sheet would be adopted for certain PME (eg drill rig, excavator for demolition of existing structures, etc). The noise insulating sheet should be deployed such that there would be no opening or gaps on the joints. | Whole Site | During construction | √ |
| S5.9 | - | Use temporary noise barriers to mitigate the noise impact arising from the construction works, particularly for low-rise NSRs. Movable noise barriers of 3 m in height with skid footing should be used and located within a few metres of stationary plant and mobile plant such that the line of sight to the NSR is blocked by the barriers. The length of the barrier should be at least five times greater than its height. The noise barrier material should have a superficial surface density of at least 7 kg m ⁻² and have no openings or gaps. | Whole Site | During construction | √ |
| S5.9 | - | Use quiet PME as far as practicable to mitigate the construction noise impact. | Whole Site | During construction | √ |
| S5.9 | - | Scheduling of construction activities with identified grouping of PMEs. | Whole Site | During construction | √ |

| EIA Ref. | EM&A Ref. | Recommended Mitigation Measures | Location | When to Implement the Measure | Status |
|--------------------|-----------|---|------------|-------------------------------|--------|
| S5.11 | S5 | Weekly noise monitoring will be undertaken at the representative NSRs N2 Ho Fook Building and N5 Chancery House. Monthly site audits will be conducted to ensure that the recommended mitigation measures are properly implemented during the construction stage. | Whole Site | During construction | √ |
| <i>Air Quality</i> | | | | | |
| S6.8.1 | - | Dust control measures stipulated in the <i>Air Pollution Control (Construction Dust) Regulation</i> will be implemented during the construction phase to control the potential fugitive dust emissions. | Whole Site | During construction | √ |
| S6.8.1 | - | In particular: Temporary stockpiles of dusty materials will be either covered entirely by impervious sheets; placed in an area sheltered on the top and three sides; or sprayed with water to maintain the entire surface wet at all the time. | Whole Site | During construction | √ |
| S6.8.1 | - | Impervious sheet will be provided for skip hoist for material transport. | Whole Site | During construction | √ |
| S6.8.1 | - | Vehicle washing facilities will be provided at the designated vehicle exit points. | Whole Site | During construction | √ |
| S6.8.1 | - | Every vehicle will be washed to remove any dusty materials from its chassis and wheels immediately before leaving the worksite. | Whole Site | During construction | √ |
| S6.8.1 | - | Road sections between vehicle-wash areas and vehicular entrances will be paved. | Whole Site | During construction | √ |
| S6.8.1 | - | The load carried by the trucks will be covered entirely to ensure no dust emission from the vehicles. | Whole Site | During construction | √ |
| S6.8.1 | - | Hoarding of not less than 2.4m high from ground level will be provided along the Project Site boundary adjoining a road where the new buildings (Old Bailey Wing and Arbuthnot Wing) will be constructed. | Whole Site | During construction | √ |
| S6.8.1 | - | Stockpiles of more than 20 bags of cement, dry pulverised fuel ash and dusty construction materials will be covered entirely by impervious sheeting sheltered on top and 3-sides. | Whole Site | During construction | √ |
| S6.8.1 | - | An effective dust screen will be provided to enclose scaffolding, if | Whole Site | During | √ |

| EIA Ref. | EM&A Ref. | Recommended Mitigation Measures | Location | When to Implement the Measure | Status |
|----------------------|-----------|---|--------------------------|-------------------------------|---------------------|
| | | required, from the ground floor level of building for construction of superstructure of the new buildings. | | construction | |
| S6.8.1 | - | Impervious dust screen or sheeting will be implemented for demolition of structures and renovation of outer surfaces of structures that abuts or fronts open area accessible to the public to no less than 1m higher than the highest level of the structure being demolished. | Whole Site | During construction | √ |
| S6.8.1 | - | The area at which demolition work takes place will be sprayed with water or dust suppression chemical immediately prior to, during and immediately after the demolition activity. | Area for Demolition Work | During construction | √ |
| S6.8.1 | - | ULSD will be used for all construction plant on-site. | Whole Site | During construction | √ |
| S6.8.1 | - | The engine of the construction equipment or trucks during idling will be switched off. | Whole Site | During construction | √ |
| S6.8.1 | - | Site practices such as regular maintenance and checking of construction equipment deployed on-site will be conducted to avoid any black smoke emissions and to minimise gaseous emissions. | Whole Site | During construction | N/A - Not observed. |
| S6.10 | S3.2 | Monthly environmental site audits to ensure that appropriate dust control measures are properly implemented and good construction site practices are adopted throughout the construction period. | Whole Site | During construction | √ |
| <i>Water Quality</i> | | | | | |
| S7.6 | - | Channels, earth bunds or sand bag barriers will be provided on site to direct stormwater to silt removal facilities. The design of silt removal facilities will make reference to the guidelines in <i>Appendix A1 of ProPECC PN 1/94</i> . All drainage facilities and erosion and sediment control structures will be inspected on a regular basis and maintained to confirm proper and efficient operation at all times and particularly during rainstorms. Deposited silt and grit will be removed regularly. | Whole Site | During construction | √ |
| S7.6 | - | All drainage facilities and erosion and sediment control structures will be regularly inspected and maintained to ensure proper and efficient operation at all times and particularly following rainstorms. Deposited silt and grit will be removed regularly and disposed of. | Whole Site | During construction | N/A - Not observed. |

| EIA Ref. | EM&A Ref. | Recommended Mitigation Measures | Location | When to Implement the Measure | Status |
|----------|-----------|---|------------|-------------------------------|---------------------|
| S7.6 | - | Measures will be taken to reduce the ingress of stormwater into excavation areas. If the excavation of the concrete foundation is to be carried out in wet season, they will be dug and backfilled in short sections wherever practicable. Water pumped out from trenches or foundation excavations will be discharged into stormwater drains via silt removal facilities. | Whole Site | During construction | N/A – Not observed. |
| S7.6 | - | Open stockpiles of excavated and demolition materials will be covered with tarpaulin or similar fabric during rainstorms. Measures will be taken to prevent the washing away of residues, chemicals or debris into any drainage system. | Whole Site | During construction | √ |
| S7.6 | - | Manholes (including newly constructed ones) will always be adequately covered and temporarily sealed so as to prevent silt, construction materials or debris being washed into the drainage system. | Whole Site | During construction | N/A – Not observed. |
| S7.6 | - | Precautions will be taken when a rainstorm is imminent or forecasted, and actions to be taken during or after rainstorms are summarised in Appendix A2 of <i>ProPECC PN 1/94</i> . Particular attention will be paid to the control of silty surface runoff during storm events. | Whole Site | During construction | N/A – Not observed. |
| S7.6 | - | All temporary and permanent drainage pipes and culverts provided to facilitate runoff discharge will be adequately designed for the controlled release of stormwater flows. All sediment traps will be regularly cleaned and maintained. The temporary diverted drainage will be reinstated to the original condition when the construction work has finished or the temporary diversion is no longer required. | Whole Site | During construction | N/A – Not observed. |
| S7.6 | - | Vehicle and plant servicing areas, vehicle washing bays and lubrication bays will, as far as possible, be located within roofed areas. The drainage in these covered areas will be connected to foul sewers via a petrol interceptor. | Whole Site | During construction | N/A – Not observed. |
| S7.6 | - | Oil leakage or spillage will be contained and cleaned up immediately. Waste oil will be collected and stored for recycling or disposal. | Whole Site | During construction | N/A – Not observed. |
| S7.6 | - | Waste streams classifiable as chemical wastes will be properly stored, collected and treated. | Whole Site | During construction | √ |
| S7.6 | - | All fuel tanks and chemical storage areas will be provided with locks and be sited on paved areas. | Whole Site | During construction | √ |

| EIA Ref. | EM&A Ref. | Recommended Mitigation Measures | Location | When to Implement the Measure | Status |
|-------------------------|--------------------|---|------------|-------------------------------|---------------------|
| S7.6 | - | The storage areas will be surrounded by bunds with a capacity equal to 110% of the storage capacity of the largest tank to prevent spilled oil, fuel and chemicals from reaching the receiving waters. | Whole Site | During construction | √ |
| S7.6 | - | The Contractors will prepare guidelines and procedures for immediate clean-up actions following any spillages of oil, fuel or chemicals. | Whole Site | During construction | √ |
| S7.6 | - | Surface runoff from bunded areas will pass through oil/grease traps prior to discharge to the stormwater system | Whole Site | During construction | N/A – Not observed. |
| S7.6 | - | The stormwater discharge from the site will be monitored as part of the routine monitoring under the WPCO licence, if applicable. | Whole Site | During construction | N/A – Not observed. |
| S7.6 | - | The existing toilet facilities of the CPS will be available to the construction workforce. The sewage will be discharged to the public sewer. | Whole Site | During construction | √ |
| S7.8 | S5.2 | Monthly site audits of the works areas will be carried out during the construction phase to monitor the environmental performance of the Project and to enable prompt actions to rectify any malpractice which may give rise to water pollution problem. | Whole Site | During construction | √ |
| <i>Waste Management</i> | | | | | |
| S8.5 | S6.3.1 & Table 6.1 | <u>General</u> The Contractor shall apply for and obtain all the necessary waste disposal permits or licences are obtained prior to the commencement of the construction works. | Whole Site | During construction | √ |
| S8.5 | - | <u>Management of Waste Disposal</u> The construction contractor will open a billing account with the EPD. Every construction waste or public fill load to be transferred to the Government waste disposal facilities such as public fill reception facilities, sorting facilities, landfills will require a valid “chit” which contains the information of the account holder to facilitate waste transaction recording and billing to the waste producer. | Whole Site | During construction | √ |
| S8.5 | S6.2 | A trip-ticket system will also be established to monitor the disposal of construction waste at landfill and to control fly-tipping. The trip-ticket | Whole Site | During construction | √ |

| EIA Ref. | EM&A Ref. | Recommended Mitigation Measures | Location | When to Implement the Measure | Status |
|----------|----------------|---|------------|-----------------------------------|--------|
| | | system will be included as one of the contractual requirements and implemented by the contractor. | | | |
| S8.5 | S6 & Table 6.1 | A recording system for the amount of wastes generated/recycled and disposed of will be established during the construction phase. | Whole Site | During construction | √ |
| S8.5 | S6.3 | <u>Reduction of Construction Waste Generation</u> C&D material will be segregated on-site into public fill and construction waste and stored in different containers or skips to facilitate reuse of the public fill and proper disposal of the construction waste. Specific areas of the work site will be designated for such segregation and storage if immediate use is not practicable. | Whole Site | During construction | √ |
| S8.5 | S6 | <u>Chemical Waste</u> The contractor will register as a chemical waste producer with the EPD. | Whole Site | During construction and operation | √ |
| S8.5 | S6 | Containers used for storage of chemical waste shall: <ul style="list-style-type: none"> • Be suitable for the substance they are holding, resistant to corrosion, maintained in a good condition, and securely closed; • Have a capacity of less than 450 L unless the specifications have been approved by the EPD; and • Display a label in English and Chinese in accordance with instructions prescribed in <i>Schedule 2 of the Regulations</i>. | Whole Site | During construction and operation | √ |
| S8.5 | S6 | Storage areas for chemical waste shall: <ul style="list-style-type: none"> • Be clearly labelled and used solely for the storage of chemical waste; • Be enclosed on at least 3 sides; • Have an impermeable floor and bunding, of capacity to accommodate 110% of the volume of the largest container or 20% by volume of the chemical waste stored in that area, whichever is the greatest; • Have adequate ventilation; • Be covered to prevent rainfall entering (water collected within the bund must be tested and disposed of as chemical waste, if necessary); and | Whole Site | During construction and operation | √ |

| EIA Ref. | EM&A Ref. | Recommended Mitigation Measures | Location | When to Implement the Measure | Status |
|----------|----------------|--|---|-----------------------------------|--------|
| | | <ul style="list-style-type: none"> Be arranged so that incompatible materials are appropriately separated. | | | |
| S8.5 | S6 | A licensed contractor shall be employed to collect chemical waste for delivery to a licensed treatment facility. | Chemical Waste Treatment Centre at Tsing Yi | During construction and operation | √ |
| S8.5 | S6 & Table 6.1 | <u>General Refuse</u> General refuse will be stored in enclosed bins separately from construction and chemical wastes. The general refuse will be delivered to the transfer station, separately from construction and chemical wastes, on a daily basis to reduce odour, pest and litter impacts. | Whole site | During construction | √ |
| S8.5 | S6 | Recycling bins will be provided at strategic locations to facilitate recovery of aluminium can and waste paper from the Site. Materials recovered will be sold for recycling. | Whole site | During construction and operation | √ |
| S8.5 | S6 | <u>Staff Training</u> At the commencement of the construction works, training will be provided to workers on the concepts of site cleanliness and on appropriate waste management procedures, including waste reduction, reuse and recycling. | Whole site | Commencement of construction | √ |
| S8.7 | S6.1 & 6.3 | Monthly audits of the waste management practices will be carried out during the construction phases to determine if wastes are being managed in accordance with the recommended good site practices. The audits will examine all aspects of waste management including waste generation, storage, recycling, transport and disposal. | Whole site | During construction | √ |

Remark:

- √ Compliance of Mitigation Measures
- <> Compliance of Mitigation but need improvement
- x Non-compliance of Mitigation Measures
- ▲ Non-compliance of Mitigation Measures but rectified by Gammon Construction Ltd
- Δ Deficiency of Mitigation Measures but rectified by Gammon Construction Ltd
- N/A Not Applicable in Reporting Period

Annex H

Noise Monitoring Results

Annex H Noise Monitoring Results

Daytime Noise Monitoring Results

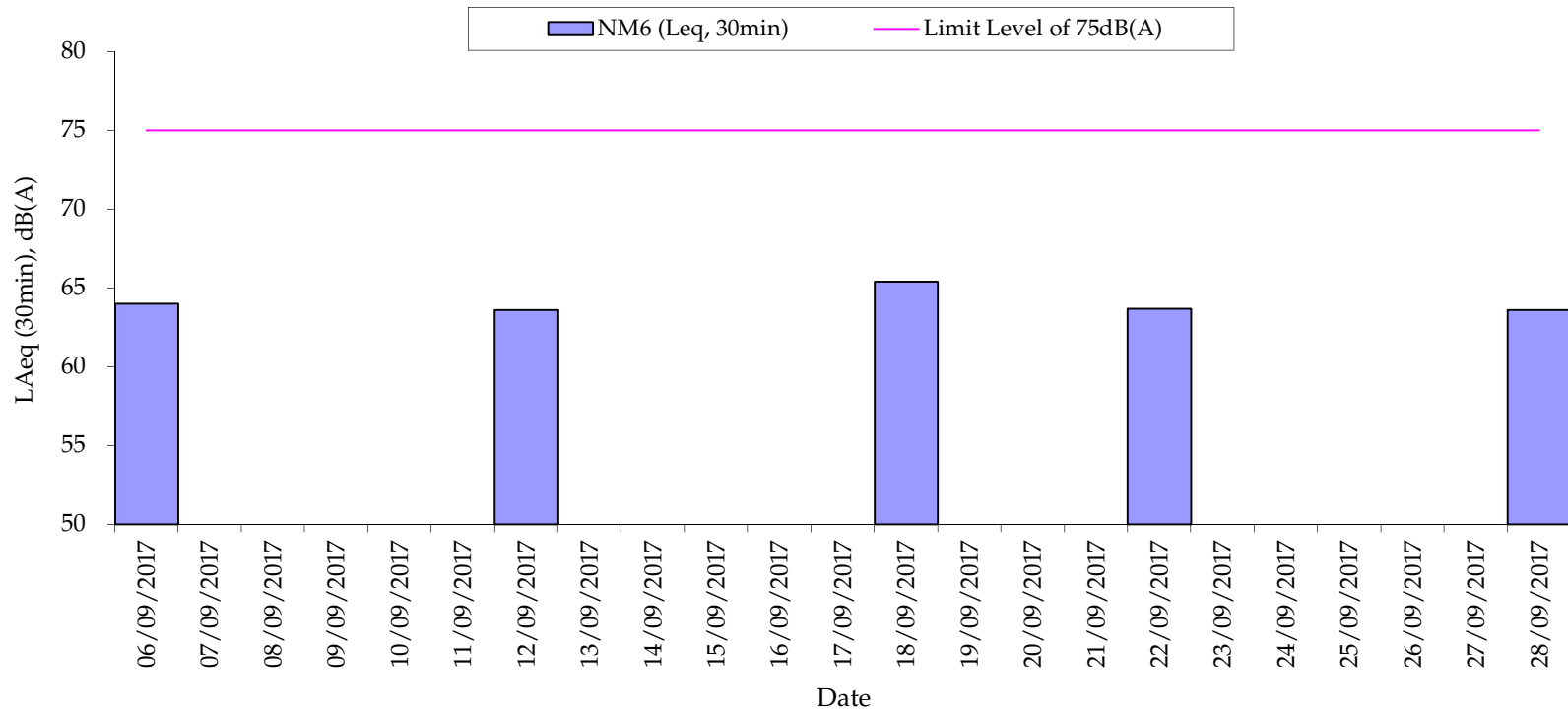
NM6 Chancery Mansion

| Date | Start Time | End Time | Weather | Noise level (dB(A)), 30 min | | | Major Construction Noise Source(s) Observed | Other Noise Source(s) Observed | Remarks | Wind Speed (m/s) | Noise Meter Model / ID | Calibrator Model / ID |
|-----------|------------|----------|---------|-----------------------------|------|------|---|--------------------------------|---------|------------------|------------------------|-----------------------|
| | | | | Leq | L10 | L90 | | | | | | |
| 06-Sep-17 | 14:40 | 15:10 | Sunny | 64.0 | 65.4 | 62.4 | Interior fitting (within the project site) | Traffic Noise | - | 0.2 | CEL-633A (S/N 3521757) | CEL-120 (S/N 3421612) |
| 12-Sep-17 | 9:12 | 9:42 | Sunny | 63.6 | 65.1 | 62.2 | Interior fitting (within the project site) | Traffic Noise | - | 0.2 | CEL-633A (S/N 3521757) | CEL-120 (S/N 3421612) |
| 18-Sep-17 | 9:50 | 10:20 | Sunny | 65.4 | 67.1 | 63.1 | Interior fitting (within the project site) | Traffic Noise | - | 0.5 | CEL-633A (S/N 3521757) | CEL-120 (S/N 3421612) |
| 22-Sep-17 | 9:50 | 10:20 | Sunny | 63.7 | 65.0 | 61.5 | Interior fitting (within the project site) | Traffic Noise | - | 0.4 | CEL-633A (S/N 3521757) | CEL-120 (S/N 3421612) |
| 28-Sep-17 | 9:30 | 10:00 | Sunny | 63.6 | 65.2 | 61.9 | Interior fitting (within the project site) | Traffic Noise | - | 0.3 | CEL-633A (S/N 3521757) | CEL-120 (S/N 3421612) |
| | | | | Min. | 63.6 | | | | | | | |
| | | | | Max. | 65.4 | | | | | | | |

NM2 Ho Fook Building

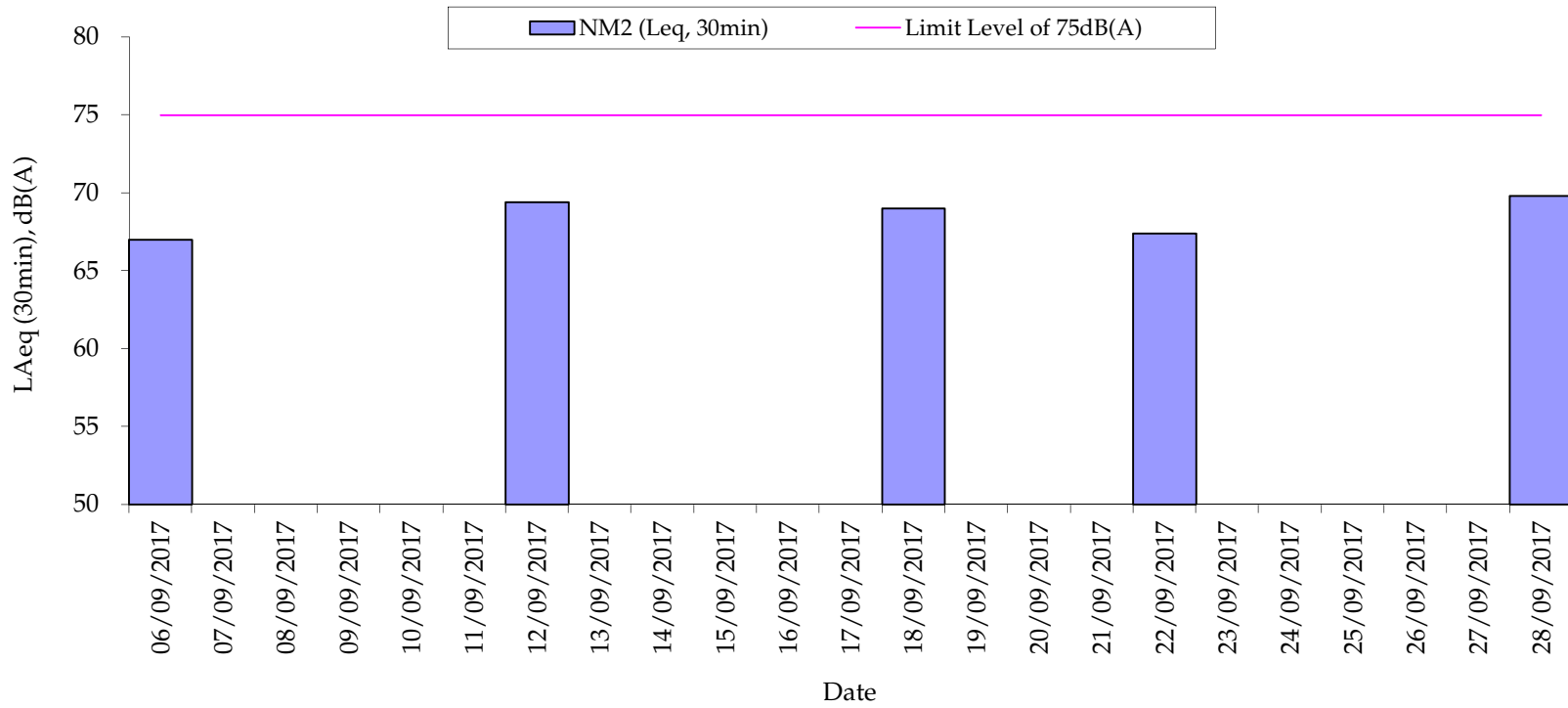
| Date | Start Time | End Time | Weather | Noise level (dB(A)), 30 min | | | Major Construction Noise Source(s) Observed | Other Noise Source(s) Observed | Remarks | Wind Speed (m/s) | Noise Meter Model / ID | Calibrator Model / ID |
|-----------|------------|----------|---------|-----------------------------|------|------|---|--------------------------------|---------|------------------|------------------------|-----------------------|
| | | | | Leq | L10 | L90 | | | | | | |
| 06-Sep-17 | 15:30 | 16:00 | Sunny | 67.0 | 68.1 | 64.3 | Interior fitting (within the project site) | Traffic noise | - | 0.2 | CEL-633A (S/N 3521757) | CEL-120 (S/N 3421612) |
| 12-Sep-17 | 14:40 | 15:10 | Sunny | 69.4 | 71.7 | 65.7 | Interior fitting (within the project site) | Traffic Noise | - | 0.2 | CEL-633A (S/N 3521757) | CEL-120 (S/N 3421612) |
| 18-Sep-17 | 10:28 | 10:58 | Sunny | 69.0 | 71.0 | 65.0 | Interior fitting (within the project site) | Traffic Noise | - | 0.8 | CEL-633A (S/N 3521757) | CEL-120 (S/N 3421612) |
| 22-Sep-17 | 10:28 | 10:58 | Sunny | 67.4 | 69.3 | 64.1 | Interior fitting (within the project site) | Traffic Noise | - | 0.3 | CEL-633A (S/N 3521757) | CEL-120 (S/N 3421612) |
| 28-Sep-17 | 10:09 | 10:39 | Sunny | 69.8 | 72.6 | 65.5 | Interior fitting (within the project site) | Traffic Noise | - | 0.2 | CEL-633A (S/N 3521757) | CEL-120 (S/N 3421612) |
| | | | | Min. | 67.0 | | | | | | | |
| | | | | Max. | 69.8 | | | | | | | |

Normal Weekdays Noise Monitoring Results at NM6 - Chancery Mansion (Leq, 30min)



Remark:
- 75dB(A) was adopted as the Limit Level during normal weekdays in the reporting period

Normal Weekdays Noise Monitoring Results at NM2 - Ho Fook Building (Leq, 30min)



Remark:

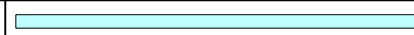

- 75dB(A) was adopted as the Limit Level during normal weekdays in the reporting period

Annex I

Construction Programme for the Project

| Activity ID | Activity Description | Orig Dur | Start Date | Finish Date | 2017 | | | | | | | | | | | | 2018 | | |
|---|---|----------|------------|-------------|------|-----|-----|-----|-----|-----|-----|-----|-----|-----|-----|-----|------|--|--|
| | | | | | APR | MAY | JUN | JUL | AUG | SEP | OCT | NOV | DEC | JAN | FEB | MAR | | | |
| CENTRAL POLICE STATION | | | | | | | | | | | | | | | | | | | |
| BLOCK 1 - POLICE HEADQUARTERS | | | | | | | | | | | | | | | | | | | |
| SB01-0010 | BLOCK 1 - FACADE WORK | 201* | 21JUL16A | 06FEB17A | | | | | | | | | | | | | | | |
| SB01-0020 | BLOCK 1 - FINISHES & E/M INCL TEMP SITE OFFICE | 384* | 21JUL16A | 08AUG17 | | | | | | | | | | | | | | | |
| BLOCK 2 - ARMOURY & STORE | | | | | | | | | | | | | | | | | | | |
| SB02-0010 | BLOCK 2 - FACADE WORK | 36* | 21OCT16A | 25NOV16A | | | | | | | | | | | | | | | |
| SB02-0020 | BLOCK 2 - FINISHES & E/M WORK | 245* | 21JUL16A | 22MAR17A | | | | | | | | | | | | | | | |
| BLOCK 3 - BARRACK BLOCK | | | | | | | | | | | | | | | | | | | |
| SB03-0010 | BLOCK 3 - FACADE WORK | 249* | 21SEP16A | 27MAY17 | | | | | | | | | | | | | | | |
| SB03-0020 | BLOCK 3 - FINISHES, E/M WORK & PART FLOOR STRAP | 229* | 05DEC16A | 21JUL17 | | | | | | | | | | | | | | | |
| SB03-0030 | BLOCK 3 - 2/F FLOOR STRAP | 73* | 05AUG17 | 16OCT17 | | | | | | | | | | | | | | | |
| BLOCK 6 - DORMITORY BLOCK C | | | | | | | | | | | | | | | | | | | |
| SB06-0010 | BLOCK 6 - FACADE WORK | 33* | 01NOV16A | 03DEC16A | | | | | | | | | | | | | | | |
| SB06-0020 | BLOCK 6 - FINISHES & E/M WORK | 302* | 09AUG16A | 06JUN17 | | | | | | | | | | | | | | | |
| BLOCK 7 - DORMITORY BLOCK D | | | | | | | | | | | | | | | | | | | |
| SB07-0010 | BLOCK 7 - FINISHES & E/M WORK | 302* | 09AUG16A | 06JUN17 | | | | | | | | | | | | | | | |
| BLOCK 8 - ABLUTIONS BLOCK | | | | | | | | | | | | | | | | | | | |
| SB08-0010 | BLOCK 8 - FACADE WORK | 178* | 24NOV16A | 20MAY17 | | | | | | | | | | | | | | | |
| SB08-0020 | BLOCK 8 - FINISHES & E/M WORK | 270* | 07OCT16A | 03JUL17 | | | | | | | | | | | | | | | |
| BLOCK 9 - CENTRAL MAGISTRACY | | | | | | | | | | | | | | | | | | | |
| SB09-0010 | BLOCK 9 - FACADE WORK INCL SOUTH ELEVATION | 406* | 25AUG16A | 04OCT17 | | | | | | | | | | | | | | | |
| SB09-0020 | BLOCK 9 - FINISHES & E/M WORK | 401* | 25AUG16A | 29SEP17 | | | | | | | | | | | | | | | |
| SB09-0030 | BLK 9-COURT RM/ CANOPY STRENGTHEN & REINSTATEMENT | 223* | 26MAY17 | 03JAN18 | | | | | | | | | | | | | | | |
| BLOCK 10 - SUPERINTENDENTS HOUSE | | | | | | | | | | | | | | | | | | | |
| SB10-0010 | BLOCK 10 - FACADE WORK INCL BALCONY REPAIR | 398* | 06OCT16A | 07NOV17 | | | | | | | | | | | | | | | |
| SB10-0020 | BLOCK 10 - FINISHES & E/M WORK INCL FLOOR STRAP | 387* | 04OCT16A | 25OCT17 | | | | | | | | | | | | | | | |
| BLOCK 11 - A HALL | | | | | | | | | | | | | | | | | | | |
| SB11-0010 | BLOCK 11 - FACADE WORK | 219* | 07OCT16A | 13MAY17 | | | | | | | | | | | | | | | |
| SB11-0020 | BLOCK 11 - FINISHES & E/M WORK | 233* | 24NOV16A | 14JUL17 | | | | | | | | | | | | | | | |
| BLOCK 12 - B HALL | | | | | | | | | | | | | | | | | | | |
| SB12-0010 | BLOCK 12 - FACADE WORK | 376* | 14JUL16A | 24JUL17 | | | | | | | | | | | | | | | |
| SB12-0020 | BLOCK 12 - FINISHES & E/M WORK | 365* | 14JUL16A | 13JUL17 | | | | | | | | | | | | | | | |
| BLOCK 13 - C HALL | | | | | | | | | | | | | | | | | | | |
| SB13-0010 | BLOCK 13 - FACADE WORK INCL CANOPY REMOVAL | 257* | 06OCT16A | 19JUN17 | | | | | | | | | | | | | | | |
| SB13-0020 | BLOCK 13 - FINISHES & E/M WORK | 262* | 06OCT16A | 24JUN17 | | | | | | | | | | | | | | | |
| BLOCK 14 - D HALL | | | | | | | | | | | | | | | | | | | |
| SB14-0010 | BLOCK 14 - FACADE WORK | 281* | 21SEP16A | 28JUN17 | | | | | | | | | | | | | | | |
| SB14-0020 | BLOCK 14 - FINISHES & E/M WORK INC CROSS BRACING | 290* | 21SEP16A | 07JUL17 | | | | | | | | | | | | | | | |
| BLOCK 15 - E HALL | | | | | | | | | | | | | | | | | | | |
| SB15-0010 | BLOCK 15 - FACADE WORK | 244* | 04JUL16A | 04MAR17A | | | | | | | | | | | | | | | |
| SB15-0020 | BLOCK 15 - FINISHES & E/M WORK | 356* | 04JUL16A | 24JUN17 | | | | | | | | | | | | | | | |
| BLOCK 17 - F HALL | | | | | | | | | | | | | | | | | | | |
| SB17-0010 | BLOCK 17 - FACADE WORK INC EXT WINDOW TOP RAIL | 310* | 21JUL16A | 26MAY17 | | | | | | | | | | | | | | | |
| SB17-0020 | BLOCK 17 - FINISHES & E/M WORK | 335* | 21JUL16A | 20JUN17 | | | | | | | | | | | | | | | |
| BLOCK 19 - BAUHINIA HOUSE | | | | | | | | | | | | | | | | | | | |
| SB19-0010 | BLOCK 19 - FINISHES & E/M WORK | 195* | 11NOV16A | 24MAY17 | | | | | | | | | | | | | | | |
| BLOCK 50 OLD BAILEY WING | | | | | | | | | | | | | | | | | | | |
| SB50-0010 | OBW FINISHES & E/M WORK INC R54 | 416* | 20JUN16A | 09AUG17 | | | | | | | | | | | | | | | |

| | |
|-------------|---------------|
| Start Date | 07JUL10 |
| Finish Date | 09AUG18 |
| Data Date | 27APR17 |
| Run Date | 04MAY17 13:04 |

| | |
|---|--------------|
|  | Early Bar |
|  | Progress Bar |

7D02

**CENTRAL POLICE STATION
CONSERVATION AND REVITALIZATION**

**SUMMARY PROGRAMME TO COMPLETION REV 7B
(EXCL BLOCK 4)**

(WITH PROGRESS AS OF 27 APRIL 2017)

Sheet 1 of 2




| GCL/P/J3416/SUM/CP07B | | | |
|-----------------------|----------|---------|----------|
| Date | Revision | Checked | Approved |
| | | | |
| | | | |
| | | | |
| | | | |
| | | | |
| | | | |
| | | | |
| | | | |

| Activity ID | Activity Description | Orig Dur | Start Date | Finish Date | 2017 | | | | | | | | | | | | 2018 | | |
|--|--|----------|------------|-------------|------|-----|-----|-----|-----|-----|-----|-----|-----|-----|-----|-----|------|--|--|
| | | | | | APR | MAY | JUN | JUL | AUG | SEP | OCT | NOV | DEC | JAN | FEB | MAR | | | |
| BLOCK 51 ARBUTHNOT WING | | | | | | | | | | | | | | | | | | | |
| SB51-0010 | AW - FINISHES & E/M WORK | 379* | 20JUN16A | 03JUL17 | | | | | | | | | | | | | | | |
| EXTERNAL WORKS | | | | | | | | | | | | | | | | | | | |
| SBEW-0010 | EXTERNAL WORK (INCL BLK 4 PROTECTIVE PLATFORM) | 543* | 04JUL16A | 28DEC17 | | | | | | | | | | | | | | | |
| STATUTORY INSPECT & HANDOVER (EXCL BLK 09 & 10) | | | | | | | | | | | | | | | | | | | |
| SBST-0010 | SUBMIT BA13 & BA14 | 0 | | 21JUL17 | | | | | | | | | | | | | | | |
| SBST-0020 | BD INSPECTION | 14* | 22JUL17 | 04AUG17 | | | | | | | | | | | | | | | |
| SBST-0030 | ISSUE OP & BA14 ACKNOWLEDGEMENT | 0 | | 04AUG17 | | | | | | | | | | | | | | | |
| SBST-0040 | HANDOVER FOR PC | 27* | 22JUL17 | 17AUG17 | | | | | | | | | | | | | | | |
| SBST-0050 | PRACTICAL COMPLETION | 0 | | 17AUG17 | | | | | | | | | | | | | | | |
| STATUTORY INSPECTIONS & HANDOVER (BLK 10) | | | | | | | | | | | | | | | | | | | |
| SBST-0170 | SUBMIT BA14 | 0 | | 03NOV17 | | | | | | | | | | | | | | | |
| SBST-0180 | BD INSPECTION | 28* | 04NOV17 | 01DEC17 | | | | | | | | | | | | | | | |
| SBST-0190 | ISSUE BA14 ACKNOWLEDGEMENT | 0 | | 01DEC17 | | | | | | | | | | | | | | | |
| SBST-0200 | HANDOVER FOR PC | 28* | 04NOV17 | 01DEC17 | | | | | | | | | | | | | | | |
| SBST-0210 | PRACTICAL COMPLETION | 0 | | 01DEC17 | | | | | | | | | | | | | | | |
| STATUTORY INSPECTIONS & HANDOVER (BLK 9) | | | | | | | | | | | | | | | | | | | |
| SBST-0110 | SUBMIT BA14 | 0 | | 14DEC17 | | | | | | | | | | | | | | | |
| SBST-0120 | BD INSPECTION | 28* | 15DEC17 | 11JAN18 | | | | | | | | | | | | | | | |
| SBST-0130 | ISSUE BA14 ACKNOWLEDGEMENT | 0 | | 11JAN18 | | | | | | | | | | | | | | | |
| SBST-0140 | HANDOVER FOR PC | 28* | 15DEC17 | 11JAN18 | | | | | | | | | | | | | | | |
| SBST-0150 | PRACTICAL COMPLETION | 0 | | 11JAN18 | | | | | | | | | | | | | | | |

Start Date 07JUL10
 Finish Date 09AUG18
 Data Date 27APR17
 Run Date 04MAY17 13:04



7D02

**CENTRAL POLICE STATION
 CONSERVATION AND REVITALIZATION**

**SUMMARY PROGRAMME TO COMPLETION REV 7B
 (EXCL BLOCK 4)**

(WITH PROGRESS AS OF 27 APRIL 2017)



| GCL/P/J3416/SUM/CP07B | | | |
|-----------------------|----------|---------|----------|
| Date | Revision | Checked | Approved |
| | | | |
| | | | |
| | | | |
| | | | |
| | | | |
| | | | |
| | | | |
| | | | |

| Activity ID | Activity Description | Dur | Start Date | Finish Date | SA Programme Start | SA Programme Finish | % Comp | Last Update 30MARCH2017 % Comp | 2016 | | | | | | | | | | | | 2017 | | | | | | | | | | | | 2018 | | | | | | | | | | | |
|---|--|------|------------|-------------|--------------------|---------------------|--------|--------------------------------------|---|---|---|---|---|---|---|---|---|---|---|---|------|---|---|---|---|---|---|---|---|---|---|---|------|---|---|---|---|---|---|---|---|---|---|---|
| | | | | | | | | | O | N | D | J | F | M | A | M | J | J | A | S | O | N | D | J | F | M | A | M | J | J | A | S | O | N | D | J | F | M | A | M | J | J | A | S |
| MANAGEMENT CONTRACT / ON-SITE WORKS | | | | | | | | | | | | | | | | | | | | | | | | | | | | | | | | | | | | | | | | | | | | |
| SITE WORKS | | | | | | | | | | | | | | | | | | | | | | | | | | | | | | | | | | | | | | | | | | | | |
| Proposed New Footbridge | | | | | | | | | | | | | | | | | | | | | | | | | | | | | | | | | | | | | | | | | | | | |
| WP401 - Footbridge Piling & Pile Cap | | | | | | | | | | | | | | | | | | | | | | | | | | | | | | | | | | | | | | | | | | | | |
| F2300105 | Footbridge const'n - piling, ELS & pile cap | 630* | 05OCT15A | 25JUN17 | 26JUL15 | 20JUL16 | 91 | 86 | Footbridge const'n - piling, ELS & pile cap | | | | | | | | | | | | | | | | | | | | | | | | | | | | | | | | | | | |
| F2300125 | STAGE 1 - PILING & PILE TEST | 583* | 05OCT15A | 09MAY17 | 26JUL15 | 17APR16 | 98 | 91 | STAGE 1 - PILING & PILE TEST | | | | | | | | | | | | | | | | | | | | | | | | | | | | | | | | | | | |
| F2300135 | STAGE 2 - PILE CAP CONSTRUCTION | 40* | 10MAY17 | 18JUN17 | 18APR16 | 01JUN16 | 0 | 0 | STAGE 2 - PILE CAP CONSTRUCTION | | | | | | | | | | | | | | | | | | | | | | | | | | | | | | | | | | | |
| F2300145 | STAGE 3 - ROADWORK REINSTATEMENT | 7* | 19JUN17 | 25JUN17 | 02JUN16 | 20JUL16 | 0 | 0 | STAGE 3 - ROADWORK REINSTATEMENT | | | | | | | | | | | | | | | | | | | | | | | | | | | | | | | | | | | |
| WP402 - Footbridge Superstructure | | | | | | | | | | | | | | | | | | | | | | | | | | | | | | | | | | | | | | | | | | | | |
| F2300108 | Footbridge cont'n - site access | 0 | 26JUN17 | | 21JUL16 | | 0 | 0 | Footbridge cont'n - site access | | | | | | | | | | | | | | | | | | | | | | | | | | | | | | | | | | | |
| F2300110 | Footbridge cont'n-Pier, bridge deck&Finish/E&M | 223* | 26JUN17 | 03FEB18 | 21JUL16 | 26APR17 | 0 | 0 | Footbridge cont'n-Pier, bridge deck&Finish/E&M | | | | | | | | | | | | | | | | | | | | | | | | | | | | | | | | | | | |
| F2300155 | Footbridge cont'n - Pier & bridge deck structure | 130* | 26JUN17 | 02NOV17 | 21JUL16 | 27NOV16 | 0 | 0 | Footbridge cont'n - Pier & bridge deck structure | | | | | | | | | | | | | | | | | | | | | | | | | | | | | | | | | | | |
| F2300165 | Footbridge cont'n - Finishes & E/M & inspection | 93* | 03NOV17 | 03FEB18 | 28NOV16 | 26APR17 | 0 | 0 | Footbridge cont'n - Finishes & E/M & inspection | | | | | | | | | | | | | | | | | | | | | | | | | | | | | | | | | | | |
| Design & WP Contractors Procurement | | | | | | | | | | | | | | | | | | | | | | | | | | | | | | | | | | | | | | | | | | | | |
| F2301840 | Superstruct WP - Mobilise/Lead time to commence | 150 | 17MAR16A | 20MAY17 | 30DEC15 | 27MAY16 | 84 | 65 | Superstruct WP - Mobilise/Lead time to commence | | | | | | | | | | | | | | | | | | | | | | | | | | | | | | | | | | | |
| BD Submission & Approval | | | | | | | | | | | | | | | | | | | | | | | | | | | | | | | | | | | | | | | | | | | | |
| F2301860 | Superstructure | 60 | 22MAR17A | 20MAY17 | | | 60 | 13 | Superstructure | | | | | | | | | | | | | | | | | | | | | | | | | | | | | | | | | | | |
| Construction - Foundation | | | | | | | | | | | | | | | | | | | | | | | | | | | | | | | | | | | | | | | | | | | | |
| Load Test - Shear H Pile (zone B) | | | | | | | | | | | | | | | | | | | | | | | | | | | | | | | | | | | | | | | | | | | | |
| F2302061A | BA10 Notice Period Completed for ELS | 0 | | 16MAR17A | | | 100 | 100 | BA10 Notice Period Completed for ELS | | | | | | | | | | | | | | | | | | | | | | | | | | | | | | | | | | | |
| F2302061B | GEO comment- additional monitoring point | 0 | | 22MAR17A | | | 100 | 100 | GEO comment- additional monitoring point | | | | | | | | | | | | | | | | | | | | | | | | | | | | | | | | | | | |
| F2302061C | GEO comment- pile load test requirements | 0 | | 28MAR17A | | | 100 | 100 | GEO comment- pile load test requirements | | | | | | | | | | | | | | | | | | | | | | | | | | | | | | | | | | | |
| F2302064F | Planking suspended after GEO visit on 31OCT2016 | 0 | | 31OCT16A | | | 100 | 100 | Planking suspended after GEO visit on 31OCT2016 | | | | | | | | | | | | | | | | | | | | | | | | | | | | | | | | | | | |
| F2302064G | Explore alternative ELS / planking method | 17 | 01NOV16A | 17NOV16A | | | 100 | 100 | Explore alternative ELS / planking method | | | | | | | | | | | | | | | | | | | | | | | | | | | | | | | | | | | |
| F2302065A | Resubmit ELS/planking drawing to BD for approval | 30 | 25NOV16A | 16DEC16A | | | 100 | 100 | Resubmit ELS/planking drawing to BD for approval(withdrew on 16Dec2016) | | | | | | | | | | | | | | | | | | | | | | | | | | | | | | | | | | | |
| F2302065B | Withdraw ELS/planking BD resubmission | 0 | | 16DEC16A | | | 100 | 100 | Withdraw ELS/planking BD resubmission | | | | | | | | | | | | | | | | | | | | | | | | | | | | | | | | | | | |
| F2302070 | Prepare & submit test report - shear H pile | 11 | 14APR17A | 20APR17A | 05FEB16 | 18FEB16 | 100 | 0 | Prepare & submit test report - shear H pile | | | | | | | | | | | | | | | | | | | | | | | | | | | | | | | | | | | |
| F2302160 | Submit BA8 for ELS consent | 28 | 15FEB17A | 14MAR17A | | | 100 | 100 | Submit BA8 for ELS consent | | | | | | | | | | | | | | | | | | | | | | | | | | | | | | | | | | | |
| General | | | | | | | | | | | | | | | | | | | | | | | | | | | | | | | | | | | | | | | | | | | | |
| F2302080 | BD acknowledgement | 28 | 11APR17A | 09MAY17 | 21MAR16 | 17APR16 | 54 | 0 | BD acknowledgement | | | | | | | | | | | | | | | | | | | | | | | | | | | | | | | | | | | |
| F2302090 | Apply pile cap consent | 28 | 11APR17A | 09MAY17 | 21MAR16 | 17APR16 | 54 | 0 | Apply pile cap consent | | | | | | | | | | | | | | | | | | | | | | | | | | | | | | | | | | | |
| F2302110 | Apply superstructure consent | 30 | 21MAY17 | 19JUN17 | 23JUN16 | 13JUL16 | 0 | 0 | Apply superstructure consent | | | | | | | | | | | | | | | | | | | | | | | | | | | | | | | | | | | |
| Construction - Structure, Finishes & E/M | | | | | | | | | | | | | | | | | | | | | | | | | | | | | | | | | | | | | | | | | | | | |
| F2302094 | Exc pile caps (zone A) Part 1 | 46 | 12DEC16A | 05JAN17A | | | 100 | 100 | Exc pile caps (zone A) Part 1 | | | | | | | | | | | | | | | | | | | | | | | | | | | | | | | | | | | |
| F2302094C | Exc pile cap (zone A) Part 2 | 20 | 21FEB17A | 07MAR17A | | | 100 | 100 | Exc pile cap (zone A) Part 2 | | | | | | | | | | | | | | | | | | | | | | | | | | | | | | | | | | | |
| F2302100 | Construct pile cap | 40 | 10MAY17 | 18JUN17 | 18APR16 | 01JUN16 | 0 | 0 | Construct pile cap | | | | | | | | | | | | | | | | | | | | | | | | | | | | | | | | | | | |
| F2302120 | Backfilling of excavated area | 7 | 19JUN17 | 25JUN17 | 14JUL16 | 20JUL16 | 0 | 0 | Backfilling of excavated area | | | | | | | | | | | | | | | | | | | | | | | | | | | | | | | | | | | |
| F2302130 | Erection of temporary steel decking | 70 | 26JUN17 | 03SEP17 | 21JUL16 | 28SEP16 | 0 | 0 | Erection of temporary steel decking | | | | | | | | | | | | | | | | | | | | | | | | | | | | | | | | | | | |
| F2302200 | Pier Construction | 56 | 10JUL17 | 03SEP17 | 04AUG16 | 28SEP16 | 0 | 0 | Pier Construction | | | | | | | | | | | | | | | | | | | | | | | | | | | | | | | | | | | |
| F2302300 | Footbridge Structure | 60 | 04SEP17 | 02NOV17 | 29SEP16 | 27NOV16 | 0 | 0 | Footbridge Structure | | | | | | | | | | | | | | | | | | | | | | | | | | | | | | | | | | | |
| F2302310 | Ex Central escalator modification work | 45 | 04SEP17 | 18OCT17 | | | 0 | 0 | Ex Central escalator modification work | | | | | | | | | | | | | | | | | | | | | | | | | | | | | | | | | | | |
| F2302400 | Finishes & E&M | 58 | 03NOV17 | 30DEC17 | 28NOV16 | 25FEB17 | 0 | 0 | Finishes & E&M(assume no needle gun finishes) | | | | | | | | | | | | | | | | | | | | | | | | | | | | | | | | | | | |
| F2302403 | Curing | 28 | 03NOV17 | 30NOV17 | | | 0 | 0 | Curing | | | | | | | | | | | | | | | | | | | | | | | | | | | | | | | | | | | |
| F2302405 | Dismantle of temporary steel decking | 30 | 01DEC17 | 30DEC17 | 26DEC16 | 24JAN17 | 0 | 0 | Dismantle of temporary steel decking | | | | | | | | | | | | | | | | | | | | | | | | | | | | | | | | | | | |
| F2302410 | Footpath refurbishment work | 30 | 16DEC17 | 14JAN18 | 10JAN17 | 08FEB17 | 0 | 0 | Footpath refurbishment work | | | | | | | | | | | | | | | | | | | | | | | | | | | | | | | | | | | |
| F2302500 | Statutory Inspection | 35 | 31DEC17 | 03FEB18 | 26FEB17 | 26APR17 | 0 | 0 | Statutory Inspection(period reviewed & reduced) | | | | | | | | | | | | | | | | | | | | | | | | | | | | | | | | | | | |
| F2302510 | Remaining roadworks at street level | 30 | 15JAN18 | 13FEB18 | | | 0 | 0 | Remaining roadworks at street level | | | | | | | | | | | | | | | | | | | | | | | | | | | | | | | | | | | |

Start Date 01JUL11
Finish Date 13FEB18
Data Date 27APR17
Run Date 02MAY17 09:36

Early Bar
T1 Bar
Progress Bar

F7D2
**CENTRAL POLICE STATION
CONSERVATION AND REVITALIZATION
TARGET CONSTRUCTION PROGRAMME FOR
FOOTBRIDGE
(WITH PROGRESS AS OF 27 APR 2017)
(WITH OBJECTION FROM PUBLIC)**

Sheet 1 of 1



| GCL / P / J3416 / CP06A (Footbridge) | | | |
|--------------------------------------|---|---------|----------|
| Date | Revision | Checked | Approved |
| 25MAR14 | assume no objection from public | | |
| 28APR14 | amend to account for public objections to Gazet | | |
| 22FEB16 | programme reviewed | | |
| 23FEB16 | revised to include comments | | |
| 14NOV16 | revised to cater for Zone B planking | | |
| 17NOV16 | revised after meeting on 17Nov2016 | | |

Annex J

Tree Inspection Reports

R41230



欣榮 (香港) 環境管理有限公司

Yan Wing (Hong Kong) Environment Management Limited

香港 新界 沙頭角 新樓街 15 號 二樓

No. 15, San Lau Street, 1/F., Sha Tau Kok, N.T., Hong Kong

Tel: 9776 1987, 2486 2317 Fax: 2482 4667 E-mail: yanwinghk@netvigator.com

+day

Our Ref. : YW/TP/GAMMON/2017/9/2

15th Sept. 2017

Gammon Construction Limited

Tel. 2516 8823

28/F Devon House,

Fax. 2516 6260

TaiKoo Place 979 King's Road

Hong Kong

Attn : Mr. Cliff C.H. LEUNG, Ms. Oley C.T. WONG

Dear Madam/Sir,

**Summary of Monthly Inspection Report for the Six Existing Trees
at Central Police Station Compound for Sept. 2017
(Contract Ref. : J3416/400.4/D00025)**

| Tree No. | Botanical Name | Date of Inspection | Overall Health Condition Good/Fair/Poor | Comments and Recommendations |
|----------|--------------------------------------|--------------------|--|---|
| Tree-5 | <i>Mangifera indica</i> 芒果 | 5.9.2017 | Fair | 1. Signs of Pest have been observed on the tree. 2. Pest Control and Pruning of decayed logs should be carried out 1a.s.a.p. |
| Tree-6 | <i>Aleurites moluccana</i> 石栗 | 5.9.2017 | Fair | 1. Leaves on the crown are rather sparse. 2. Keep close monitoring on the growth of the tree. |
| Tree-7 | <i>Aleurites moluccana</i> 石栗 | 5.9.2017 | Fair | 1. Leaves on the crown are rather sparse. 2. Keep close monitoring on the growth of the tree. |
| Tree-8 | <i>Plumeria rubra</i> 紅雞蛋花 | 5.9.2017 | Good | 1. No further action is required. |
| Tree-9 | <i>Araucaria cunninghamia</i> 花旗杉 | 5.9.2017 | Good | 1. No further action is required. |

| | | | | |
|---------|----------------------------------|----------|------|--|
| Tree-11 | <i>Dracaena marginata</i> 馬尾鐵 | 5.9.2017 | Fair | <ol style="list-style-type: none">1. Withered leaves still appear on the tree.2. Keep monitoring on the growth of the tree especially during the nearby renovation works are in progress. |
|---------|----------------------------------|----------|------|--|

Tree Inspection Reports and Tree Group Inspection Form (Form 1) are attached for your reference and record, please.

I should be much grateful if you could endorse the attached Invoice (No.1132) and fax it to my office at 2482 4667 Thank you.

Yours faithfully

For and on behalf of
Yan Wing (HK) Environment Management Ltd.

(WONG Pak Hay)
Contract Manager



FORM 1: TREE GROUP INSPECTION FORM

表格 1: 樹群檢查表格

General Information 基本資料

| | | | |
|-------------------------------|--------------------------------|---|----------------------|
| Company 公司: | Gammon Construction Ltd | Name of Tree Inspection officer 巡查人員姓名: | LAU Man Chung |
| File Ref. 檔案編號: | YW/TP/GAMMON/2017/9/3 | Name of Endorsement Officer 覆核人員姓名: | WONG Pak Hay |
| Date of Inspection 巡查日期: | September 5, 2017 | | |
| Project/Contract No. 合約/工程編號: | J3416/400.4/D00025 | | |

Location Information 位置資料

| | | | |
|---|--|--|--|
| Location 地點: | Central Police Station Compound | Nearby Utility Post No. 就近公用設施編號: | |
| Location Types 地點類別: Address: __ (multiple answers allowed) 可選多於一項 | <input type="checkbox"/> Roadside 路旁 <input checked="" type="checkbox"/> Open space 空地 <input type="checkbox"/> Exhibition Centre 展覽中心 <input type="checkbox"/> View Point 觀景台 <input type="checkbox"/> Walking / nature trail 行山徑 / 自然徑 <input type="checkbox"/> Others (please specify) 其他 (請說明): _____ | <input type="checkbox"/> Community Hall / Centre 社區會堂 / 中心 <input type="checkbox"/> Roadside Planter 路旁花圃 <input type="checkbox"/> Rain shelter / pavilion 避雨亭 / 涼亭 <input type="checkbox"/> Sitting out area 休憩處 | |

General Tree Information 基本樹木資料

* Delete as appropriate 請把不合適的刪除

| Main tree species in the group or minority tree species of significant size 在群組內的主要樹種或樹幹胸徑或高度或樹冠範圍較大的樹種 (Note 2) | Approx. number of trees in the relevant species or as a % of tree group 該樹種在群組內的百分比/數目* | Range of tree height (m) 該樹種高度範圍 | Overall health condition 整體健康狀況 (good, fair, poor 好, 良, 差) | Overall structural condition 整體結構狀況 (good, fair, poor 好, 良, 差) | Other remarks (Any special tree condition, e.g. dying/dead, pest/disease problem and structural defects; and soil condition 其他評語 (樹木狀況例如: 凋謝/枯樹/病蟲害或結構問題; 及泥土狀況) |
|--|--|-------------------------------------|--|--|--|
| <i>Mangifera indica</i> 芒果 | 17%, 1 No. | 16M | FAIR | FAIR | Pest Control and Pruning of decayed logs should be carried out a.s.a.p.. |
| <i>Aleurites moluccana</i> 石栗 | 32% 2 Nos. | 10-13M | FAIR | FAIR | Keep monitoring on the growth of the tree. |
| <i>Plumeria rubra</i> 紅雞蛋花 | 17% 1 No. | 7M | GOOD | GOOD | N.F.A.. |
| <i>Araucaria cunninghamia</i> 花旗杉 | 17% 1 No. | 13M | GOOD | GOOD | N.F.A.. |
| <i>Dracaena marginata</i> 馬尾鐵 | 17% 1 No. | 8M | FAIR | FAIR | Keep monitoring on the growth of the tree. |

Target 目標

| |
|--|
| TARGET (people or property potentially affected by tree/branch failure) 目標 (因樹木倒塌或枝條斷裂而受影響的人或財產) |
| Does target exist? 目標是否存在? <input checked="" type="checkbox"/> Yes 是 <input type="checkbox"/> No 否 |
| Can target be moved? 能否移除目標? <input type="checkbox"/> Yes 是 <input checked="" type="checkbox"/> No 否 |
| Can the use of site be restricted? 可否限制場地的使用? <input checked="" type="checkbox"/> Yes 是 <input type="checkbox"/> No 否 |
| Frequency of use of location 使用該地點的頻密程度: <input type="checkbox"/> Occasional use 偶爾使用 <input type="checkbox"/> Intermittent use 間歇使用 <input checked="" type="checkbox"/> Frequent use 經常使用 <input type="checkbox"/> Constant use 恆常使用 |

Identification of Trees for Remedial Action or Detailed Tree Risk Assessment

識別下述樹木, 以便採取風險緩減措施或進行詳細樹木風險評估

| Trees falling under the following criteria 樹木屬於以下任何一項或多於一項類別 | Number of trees 樹木數量 | Remedial action or detailed tree risk assessment 緩減措施或進行詳細樹木風險評估 |
|---|-------------------------|---|
| (1) Trees on complaint list with structural or health problems 投訴個案中, 結構或健康問題的樹木 (Note 1) | Nil | |
| (2) Mature trees belonging to species with brittle wood structure and having unsatisfactory health or structural conditions with failure potential 屬木質脆弱品種並已達成熟期及有倒塌風險的樹木 (Note 1) | Nil | |
| (3) Tree with major defects or health problems 有明顯缺陷或健康問題的樹木 (Note 1) | Nil | |
| (4) Trees growing in very stressful site conditions with failure potential 生長於非常擠壓環境而有倒塌風險的樹木 (Note 1) | Nil | |



Signature of Tree Inspection Officer :
Signature of Endorsement Officer:

Name of Contractor

Yan Wing (HK) Environment Management Ltd.

Date:

30-9-2017



- Note 1: If remedial action (such as pruning) undertaken cannot mitigate the potential risk of tree or branch failure, detailed tree risk assessment (using Form 2) should be carried out.
備註 1: 若風險緩減措施(如枝幹修剪)仍未能解決倒塌或枝條斷裂的潛在風險，應為該樹進行詳細的樹木風險評估(表格 2)。
- Note 2: Please read in conjunction with TMO's Guidelines on Tree Risk Assessment and Management Arrangement (Para. 4.3. refers.)
備註 2: 請參閱樹木管理辦事處的樹木風險評估安排及管理指引(第 4.3 節)

**Inspection Report for the 6 Existing Trees
at Central Police Station Compound
(Contract Ref. : J3416/400.4/D00025)**

I. TREE NUMBER : Tree-5 *Mangifera indica* 芒果

II. BASIC INFORMATION :

| | | | |
|--------------------|----------------------------|--|---------------------------|
| Height (m) | 16m | Crown spread (m) | 18m |
| DBH (mm) | 1000mm | Overall Health Condition Good/Fair/Poor | Fair |
| Date of Inspection | 5 th Sept. 2017 | Last Inspection Date | 4 th Aug. 2017 |

III. COMMENTS :

1. Overall health condition of the tree is fair.
2. The crown is full of vigorous and green leaves.
3. The site near the tree is clean and tidy.
4. Signs of Pest (Mealy Bugs 粉狀介殼蟲) have been found on the tree.

IV. RECOMMENDATIONS :

1. Pest control operation and pruning of decayed logs should be conducted as soon as possible.

V. PHOTO RECORD :



Fig 2. The root collar is normal. The planter is covered with small pieces of pine bark.



Fig. 3 Health condition of the lower trunk is fair.



Fig. 4 Health condition of the mid trunk is fair.



Fig. 5 Health condition of the upper trunk also is fair.



Fig. 6 The crown is full of vigorous and green leaves.



Fig. 7 Vigorous and green leaves also are growing on the lower branches.



Fig. 8 Young and green leaves appear on the tree.



Fig. 9 Signs of Pest (Mealy Bugs 粉狀介殼蟲) are found on the tree.



Fig. 10 Some affected leaves have felled on ground.



Fig. 11 The site near Tree-5 is clean and tidy.



Fig. 12 Overall view of Tree-5 during inspection on 5th Sept. 2017.



Signature of Inspection Officer :
(Mr. LAU Man-chung, ISA CA-HK0050A)

Signature of Endorsement Officer :
(Mr. WONG Pak-hay, Contract Manager)

Name of Contractor :

Dated this :

Yan Wing (HK) Environment
Management Ltd.

15th Sept. 2017



**Inspection Report for the 6 Existing Trees
at Central Police Station Compound
(Contract Ref. : J3416/400.4/D00025)**

I. TREE NUMBER : Tree-6 *Aleurites moluccana* 石栗

II. BASIC INFORMATION :

| | | | |
|--------------------|----------------------------|--|---------------------------|
| Height (m) | 10m | Crown spread (m) | 10m |
| DBH (mm) | 510mm | Overall Health Condition Good/Fair/Poor | Fair |
| Date of Inspection | 5 th Sept. 2017 | Last Inspection Date | 4 th Aug. 2017 |

III. COMMENTS :

1. Overall health condition of the tree is fair.
2. Flowers still remain on the branches.
3. Fresh nuts appear on the tree.
4. Signs of Pest “白粉蝨” are rarely found on the leaves.
5. Leaves on the crown are rather sparse.

IV. RECOMMENDATIONS :

1. Keep close monitoring on the growth of the tree.

V. PHOTO RECORD :

Fig 1. Tree number



Fig 2. Root collar is normal. The planter is covered with mulch and dry leaves.



Fig 3. Health condition of the lower trunk is fair.



Fig. 4 Health condition of the mid trunk is fair.



Fig. 5 Health condition of the upper trunk also is fair.



Fig. 6 Leaves on the crown are rather sparse.



Fig. 7 Leaves on the lower branches are normal.



Fig. 8 Flowers still remain on the branches.



Fig. 9 Fresh nuts appear on the tree.



Fig. 10 Signs of Pest “白粉蝨 (*Trialeurodes vaporariorum*)” are rarely found on the leaves due to Pest Control Operation on 3rd & 4th Aug. 2017.



Fig. 11 The site near Tree-6 is clean and tidy.



Fig. 12 Overall view of Tree-6 during inspection on 5th Sept. 2017.



Signature of Inspection Officer :
(Mr. LAU Man-chung, ISA CA-HK0050A)

Signature of Endorsement Officer :
(Mr. WONG Pak-hay, Contract Manager)

Name of Contractor :

Dated this :

(Handwritten signature)

Yan Wing (HK) Environment
Management Ltd.

15th Sept. 2017



**Inspection Report for the 6 Existing Trees
at Central Police Station Compound
(Contract Ref. : J3416/400.4/D00025)**

I. TREE NUMBER : Tree-7 *Aleurites moluccana* 石栗

II. BASIC INFORMATION :

| | | | |
|--------------------|----------------------------|--|---------------------------|
| Height (m) | 13m | Crown spread (m) | 12m |
| DBH (mm) | 650mm | Overall Health Condition Good/Fair/Poor | Fair |
| Date of Inspection | 5 th Sept. 2017 | Last Inspection Date | 4 th Aug. 2017 |

III. COMMENTS :

1. Overall health condition of the tree is fair.
2. Flowers still remain on the branches.
3. Fresh nuts appear on the tree.
4. Signs of Pest “白粉蟲” have apparently reduced on the tree.
5. **Leaves on the crown are rather sparse.**

IV. RECOMMENDATIONS :

1. **Keep close monitoring on the growth of the tree.**

V. PHOTO RECORD :



Fig. 2 Root collar is normal. The planter is covered with mulch and dry leaves.



Fig 3. Health condition of the lower trunk is fair.



Fig. 4 Health condition of the mid trunk is fair.



Fig. 5 Health condition of the upper trunk also is fair.



Fig. 6 Leaves on the crown are rather sparse.



Fig. 7 Signs of Pest “白粉蝨 (*Trialeurodes vaporariorum*)” have apparently reduced due to Pest Control Operation on 3rd & 4th Aug. 2017.



Fig. 8 Young and green leaves are growing on the lower branches.



Fig. 9 Some fresh nuts appear on the top part of Tree-7.



Fig. 10 Flowers still remain on the tree.



Fig. 11 The site near Tree-7 is clean and tidy.

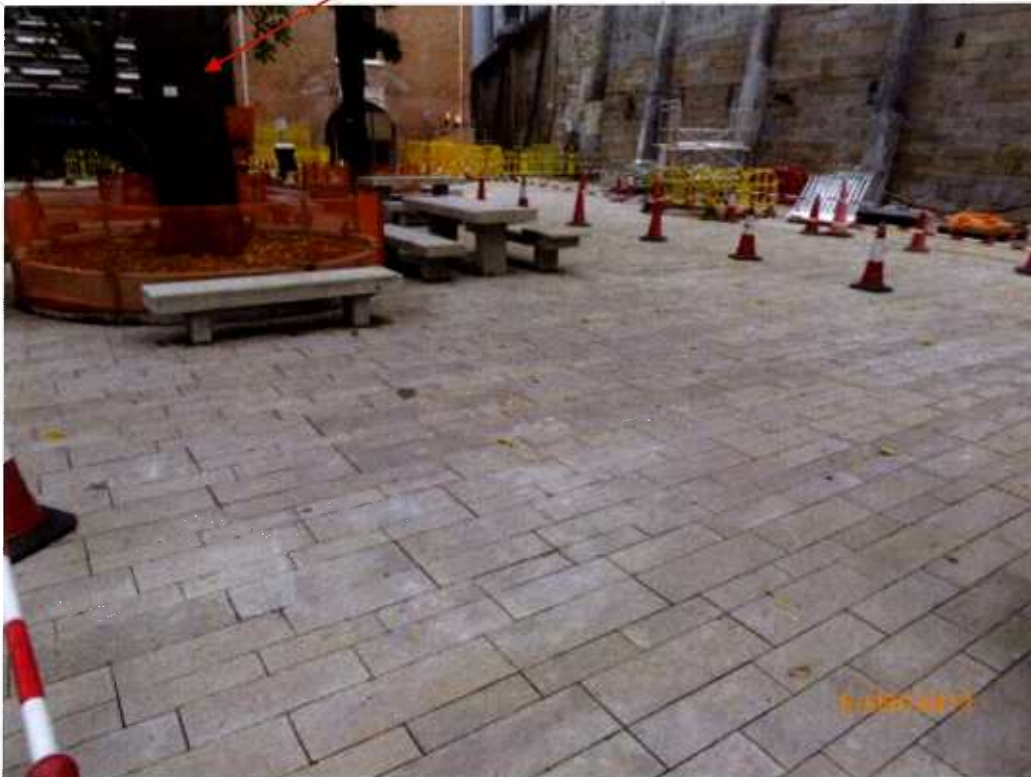


Fig. 12 Overall view of Tree-7 during inspection on 5th Sept. 2017.



Signature of Inspection Officer :
(Mr. Lau Man-chung, ISA CA-HK0045A)
Signature of Endorsement Officer :
(Mr. WONG Pak-hay, Contract Manager)

Name of Contractor :

Dated this :



Yan Wing (HK) Environment
Management Ltd

15th Sept. 2017



**Inspection Report for the 6 Existing Trees
at Central Police Station Compound
(Contract Ref. : J3416/400.4/D00025)**

I. TREE NUMBER : Tree-8 *Plumeria rubra* 紅雞蛋花

II. BASIC INFORMATION :

| | | | |
|--------------------|----------------------------|--|---------------------------|
| Height (m) | 7m | Crown spread (m) | 9m |
| DBH (mm) | 430mm | Overall Health Condition Good/Fair/Poor | Good |
| Date of Inspection | 5 th Sept. 2017 | Last Inspection Date | 4 th Aug. 2017 |

III. COMMENTS :

1. Overall health condition of the tree is good.
2. The crown is full of vigorous and green leaves.
3. Flowers still remain on the tree.
4. The site near the tree is clean and tidy.

IV. RECOMMENDATIONS :

1. No further action is required.

V. PHOTO RECORD :



Fig. 2 Root collar is normal. The planter is covered with mulch and dry leaves.



Fig. 3 Health condition of the lower trunk is fair.



Fig. 4 Health condition of the mid trunk is fair.



Fig. 5 Health condition of the upper trunk also is fair.



Fig. 6 The crown is full of vigorous and green leaves.



Fig. 7 Vigorous and green leaves also are growing on the lower branches.



Fig. 8 Flowers still remain on the tree.



Fig. 9 Side view of Tree-8 at the time of inspection on 5th Sept. 2017.



Fig. 10 The site near Tree-8 is clean and tidy.



Fig. 11 The access near Tree-8 also is clean and tidy.



Fig. 12 Overall view of Tree-8 during inspection on 5th Sept. 2017.




Signature of Inspection Officer :
(Mr. LAU Man-chung, ISA CA-HK0050A)

Signature of Endorsement Officer :
(Mr. WONG Pak-hay, Contract Manager)

Name of Contractor :

Dated this :


Yan Wing (HK) Environment
Management Ltd.

15th Sept. 2017



**Inspection Report for the 6 Existing Trees
at Central Police Station Compound
(Contract Ref. : J3416/400.4/D00025)**

I. TREE NUMBER : Tree - 9 *Araucaria cunninghamia* 花旗杉

II. BASIC INFORMATION :

| | | | |
|--------------------|----------------------------|--|---------------------------|
| Height (m) | 13m | Crown spread (m) | 5m |
| DBH (mm) | 230mm | Overall Health Condition Good/Fair/Poor | Good |
| Date of Inspection | 5 th Sept. 2017 | Last Inspection Date | 4 th Aug. 2017 |

III. COMMENTS :

1. Overall health condition of the tree is good.
2. The crown is full of vigorous and green leaves.
3. Vigorous and green leaves are growing on the lower branches.
4. The site near Tree-9 is clean and tidy.

IV. RECOMMENDATIONS :

1. No further action is required.

V. PHOTO RECORD :



Fig. 2 Root collar is normal. The planter is covered with mulch and dry leaves.



Fig. 3 Health condition of the lower trunk is fair.



Fig. 4 Health condition of the mid trunk is fair.



Fig. 5 Health condition of the upper trunk also is fair.



Fig. 6 The crown is full of vigorous and green leaves.



Fig. 7 Vigorous and green leaves also are growing on the lower branches.



Fig. 8 The dry nut still remains on the tree.



Fig. 9 Tree protection zone is in good order.



Fig. 10 The site near Tree-9 is clean and tidy.



Fig. 11 The access near Tree-9 also is clean and tidy.



Fig. 12 Overall view of Tree-9 during inspection on 5th Sept. 2017.



Signature of Inspection Officer :
(Mr. LAU Man-chung, ISA CA-HK0050A)

Signature of Endorsement Officer :
(Mr. WONG Pak-hay, Contract Manager)

Name of Contractor :

Dated this :



Yan Wing (HK) Environment
Management Ltd.

15th Sept. 2017



**Inspection Report for the 6 Existing Trees
at Central Police Station Compound
(Contract Ref. : J3416/400.4/D00025)**

I. TREE NUMBER : Tree -11 *Dracaena marginata* 馬尾鐵

II. BASIC INFORMATION :

| | | | |
|--------------------|----------------------------|--|---------------------------|
| Height (m) | 8m | Crown spread (m) | 2m |
| DBH (mm) | 170mm | Overall Health Condition Good/Fair/Poor | Fair |
| Date of Inspection | 5 th Sept. 2017 | Last Inspection Date | 4 th Aug. 2017 |

III. COMMENTS :

1. Health condition of the tree is fair.
2. Withered leaves still appear on the tree.
3. A large shelter is erected to protect the tree.
4. Renovation works near the tree are in progress.

IV. RECOMMENDATIONS

1. Keep close monitoring on the growth of Tree-11 especially during the nearby renovation works are in progress.

V. PHOTO RECORD :



Fig. 2 Root collar is normal. The planter is covered with mulch.



Fig. 3 Lots of construction debris were found at the planter during the previous inspection on 4th August 2017.



Fig. 4 Construction debris had been removed away prior to inspection on 5th Sept. 2017.



Fig. 5 Health condition of the lower trunk is fair.



Fig. 6 Health condition of the mid trunk is fair.



Fig. 7 Health condition of the upper trunk also is fair.



Fig. 8 Withered leaves still remain on the tree.



Fig. 9 A large shelter has been erected at site to protect the tree.



Fig. 10 A working platform is set up close to Tree-11.



Fig. 11 Renovation works are in progress near Tree-11.



Fig. 12 Overall view of Tree-11 during inspection on 5th Sept. 2017.



Signature of Inspection Officer :
(Mr. LAU Man-chung, ISA CA-HK0050A)

Signature of Endorsement Officer :
(Mr. WONG Pak-hay, Contract Manager)

Name of Contractor :

Dated this :

Yan Wing (HK) Environment
Management Ltd.

15th Sept. 2017



Annex K

Environmental Complaint,
Environmental Summons
and Prosecution Log

Annex K Cumulative Complaint and Summons/Prosecutions Log

| Reporting Month | Number of Complaints in Reporting Month | Number of Summons/Prosecutions in Reporting Month |
|------------------------|--|--|
| November 2011 | 0 | 0 |
| December 2011 | 0 | 0 |
| January 2012 | 0 | 0 |
| February 2012 | 0 | 0 |
| March 2012 | 4 | 0 |
| April 2012 | 0 | 0 |
| May 2012 | 0 | 0 |
| June 2012 | 2 | 0 |
| July 2012 | 1 | 0 |
| August 2012 | 0 | 0 |
| September 2012 | 0 | 0 |
| October 2012 | 0 | 0 |
| November 2012 | 2 | 0 |
| December 2012 | 0 | 0 |
| January 2013 | 0 | 0 |
| February 2013 | 1 | 0 |
| March 2013 | 1 | 0 |
| April 2013 | 0 | 0 |

| Reporting Month | Number of Complaints in Reporting Month | Number of Summons/Prosecutions in Reporting Month |
|------------------------|--|--|
| May 2013 | 0 | 0 |
| June 2013 | 0 | 0 |
| July 2013 | 0 | 0 |
| August 2013 | 0 | 0 |
| September 2013 | 0 | 0 |
| October 2013 | 0 | 0 |
| November 2013 | 0 | 0 |
| December 2013 | 0 | 0 |
| January 2014 | 2 | 0 |
| February 2014 | 1 | 0 |
| March 2014 | 1 | 0 |
| April 2014 | 1 | 0 |
| May 2014 | 0 | 0 |
| June 2014 | 0 | 0 |
| July 2014 | 2 | 0 |
| August 2014 | 3 | 0 |
| September 2014 | 2 | 0 |
| October 2014 | 1 | 0 |
| November 2014 | 0 | 0 |

| Reporting Month | Number of Complaints in Reporting Month | Number of Summons/Prosecutions in Reporting Month |
|------------------------|--|--|
| December 2014 | 0 | 0 |
| January 2015 | 0 | 0 |
| February 2015 | 1 | 0 |
| March 2015 | 1 | 0 |
| April 2015 | 0 | 0 |
| May 2015 | 1 | 0 |
| June 2015 | 1 | 0 |
| July 2015 | 1 | 0 |
| August 2015 | 1 | 0 |
| September 2015 | 0 | 0 |
| October 2015 | 0 | 0 |
| November 2015 | 0 | 0 |
| December 2015 | 0 | 0 |
| January 2016 | 0 | 0 |
| February 2016 | 0 | 0 |
| March 2016 | 1 | 0 |
| April 2016 | 0 | 0 |
| May 2016 | 0 | 0 |
| June 2016 | 0 | 0 |

| Reporting Month | Number of Complaints in Reporting Month | Number of Summons/Prosecutions in Reporting Month |
|------------------------|--|--|
| July 2016 | 0 | 0 |
| August 2016 | 0 | 0 |
| September 2016 | 1 | 0 |
| October 2016 | 0 | 0 |
| November 2016 | 0 | 0 |
| December 2016 | 0 | 0 |
| January 2017 | 0 | 0 |
| February 2017 | 0 | 0 |
| March 2017 | 0 | 0 |
| April 2017 | 0 | 0 |
| May 2017 | 0 | 0 |
| June 2017 | 0 | 0 |
| July 2017 | 0 | 0 |
| August 2017 | 0 | 0 |
| September 2017 | 0 | 0 |
| Overall Total | 32 | 0 |

Annex L

Records of Vibration
Monitoring for Other
Construction Works

Structural Additions and Alterations at Block 11



Note: This plan has been processed on a computer which uses the computerized processing system as specified in Part 14.19. The user of the software must register the user name and password as specified in the user manual and the program must be used in accordance with the license agreement of the software. The user must ensure that the software is used in accordance with the license agreement of the software.

Revision/Submission 校核/編號

| No. 編號 | Description 說明 | Date 日期 | Approved 審核 |
|--------|--------------------------|---------|-------------|
| - | BD SUBMISSION (50) | 12/11 | JS |
| A | BD SUBMISSION (01) | 03/12 | JS |
| B | BD SUBMISSION (17) | 03/12 | JS |
| C | BD SUBMISSION RW BATCH 1 | 03/12 | JS |
| D | FOR INFORMATION (50) | 03/12 | JS |
| E | BD SUBMISSION (51) | 05/12 | JS |
| F | BD SUBMISSION (04) | 05/12 | JS |
| G | BD SUBMISSION (14) | 05/12 | JS |
| H | BD SUBMISSION (14) | 05/12 | JS |
| J | BD SUBMISSION RW BATCH 2 | 05/12 | JS |
| K | BD SUBMISSION (06&07) | 07/12 | JS |
| L | BD SUBMISSION (01) | 07/12 | JS |
| M | BD SUBMISSION (11) | 07/12 | JS |

Plan Approved
CHIONG Kam-yung Jacky
 Chief Structural Engineer
 for BUILDING AUTHORITY
 - 3 OCT 2012



BD SUBMISSION
 Drawing Status 製圖狀況

This drawing and the contents herein are the copyright of relevant consultants.
 本圖紙及其內容的版權歸有關顧問公司所有。
 No part of the drawing and the design contained herein may be reproduced without the prior written consent of relevant consultants.
 未經有關顧問公司書面同意，不得複製此圖紙內任何內容。
 Do not take measurements directly from this drawing.
 切勿直接從圖紙上量度尺寸。
 Check and verify all dimensions on site.
 所有尺寸必須在工地現場核實及量度。
 Read this drawing in conjunction with the specifications and all other related drawings.
 此圖紙必須與圖紙說明書及其他相關圖紙一併閱讀。
 Notify the relevant consultants immediately of any discrepancy found herein.
 如發現圖紙內有任何錯誤之處，應立即通知有關顧問公司。

LEGEND

| | |
|--|---|
| | EXISTING FRESH WATER MAIN |
| | EXISTING SALT WATER MAIN |
| | EXISTING STREET LIGHTING NC. 33488-A1 |
| | EXISTING STREET LIGHTING CABLE |
| | EXISTING GAS MAIN |
| | EXISTING HV ELECTRICITY CABLE |
| | EXISTING LV ELECTRICITY CABLE |
| | EXISTING TELECOMMUNICATION DUCT (HUTCHISON GLOBAL COMMUNICATIONS LIMITED) |
| | EXISTING STORMWATER DRAIN |
| | EXISTING FOUL SEWER |
| | PROPOSED FOUL SEWER |
| | SITE BOUNDARY |
| | EXISTING RETAINING WALL |
| | EXISTING DRILLHOLE WITH STANDPIPE/PIEZOMETER |
| | PROPOSED BUILDING SETTLEMENT POINTS/TILTMETER |
| | PROPOSED RETAINING WALL SETTLEMENT POINTS/TILTMETER |
| | PROPOSED INCLINOMETER TO BE BUILT IN BORED PILE WALL OR PIPE PILE WALL |
| | PROPOSED GROUND SETTLEMENT POINTS |
| | PROPOSED UTILITY MONITORING POINTS |
| | PROPOSED VIBRATION MONITORING POINTS |
| | PROPOSED ADDITIONAL DRILLHOLE |

Client 業主

 The Jersey Club CP Limited

Design Consultant
HERZOG & DEMEUREN

Conservation Architect

 Rocco

Executive Architect / AP

ARUP

Structural Engineer / RSE
 E & M Engineer

JRP

Project 項目
**CENTRAL POLICE STATION
 CONSERVATION AND REVITALISATION
 PROJECT**

Drawing Table 圖名
MONITORING LAYOUT PLAN

Scale 比例
 1:300 @ A1

Drawn 繪圖
 K.C. Lai

Checked 校對
 AL

Drawing No. 圖號
 00-OAP209674-G-001

Revision 校核
 M

Cost file 00-OAP209674-G-001.dwg

Vibration Monitoring Record (September)

| | Block 11 | |
|--------------|-----------------|--------------|
| Point | VM11-1 | VM11-2 |
| Date | mm/s | mm/s |
| 01-Sep-17 | 0.105 | 0.102 |
| 02-Sep-17 | 0.109 | 0.106 |
| 03-Sep-17 | Sunday | |
| 04-Sep-17 | 0.127 | 0.102 |
| 05-Sep-17 | 0.105 | 0.106 |
| 06-Sep-17 | 0.110 | 0.103 |
| 07-Sep-17 | 0.107 | 0.102 |
| 08-Sep-17 | 0.102 | 0.105 |
| 09-Sep-17 | 0.105 | 0.103 |
| 10-Sep-17 | Sunday | |
| 11-Sep-17 | 0.109 | 0.104 |
| 12-Sep-17 | 0.105 | 0.102 |
| 13-Sep-17 | 0.111 | 0.106 |
| 14-Sep-17 | 0.125 | 0.109 |
| 15-Sep-17 | 0.106 | 0.102 |
| 16-Sep-17 | 0.106 | 0.105 |
| 17-Sep-17 | Sunday | |
| 18-Sep-17 | 0.114 | 0.109 |
| 19-Sep-17 | 0.109 | 0.102 |
| 20-Sep-17 | 0.102 | 0.106 |
| 21-Sep-17 | 0.109 | 0.105 |
| 22-Sep-17 | 0.117 | 0.109 |
| 23-Sep-17 | 0.112 | 0.111 |
| 24-Sep-17 | Sunday | |
| 25-Sep-17 | 0.108 | 0.102 |
| 26-Sep-17 | 0.105 | 0.105 |
| 27-Sep-17 | 0.119 | 0.107 |
| 28-Sep-17 | 0.107 | 0.105 |
| 29-Sep-17 | 0.109 | 0.115 |
| 30-Sep-17 | 0.109 | 0.109 |